

**MSX2 Antibody (Center)**  
**Affinity Purified Rabbit Polyclonal Antibody (Pab)**  
**Catalog # AP14677c**

**Specification**

---

**MSX2 Antibody (Center) - Product Information**

Application	WB,E
Primary Accession	<a href="#">P35548</a>
Other Accession	<a href="#">Q03356</a> , <a href="#">P70354</a> , <a href="#">P52953</a> , <a href="#">O03358</a> , <a href="#">P28362</a> , <a href="#">O0P5C3</a> , <a href="#">P13297</a> , <a href="#">P28360</a> , <a href="#">P28361</a> , <a href="#">O02786</a> , <a href="#">P35993</a> , <a href="#">P50223</a> , <a href="#">NP_002440.2</a>
Reactivity	Human
Predicted	Chicken, Xenopus, Bovine, Mouse, Rat, Zebrafish
Host	Rabbit
Clonality	Polyclonal
Isotype	Rabbit IgG
Calculated MW	28897
Antigen Region	120-148

**MSX2 Antibody (Center) - Additional Information**

**Gene ID** 4488

**Other Names**

Homeobox protein MSX-2, Homeobox protein Hox-8, MSX2, HOX8

**Target/Specificity**

This MSX2 antibody is generated from rabbits immunized with a KLH conjugated synthetic peptide between 120-148 amino acids from the Central region of human MSX2.

**Dilution**

WB~~1:1000

**Format**

Purified polyclonal antibody supplied in PBS with 0.09% (W/V) sodium azide. This antibody is purified through a protein A column, followed by peptide affinity purification.

**Storage**

Maintain refrigerated at 2-8°C for up to 2 weeks. For long term storage store at -20°C in small aliquots to prevent freeze-thaw cycles.

**Precautions**

MSX2 Antibody (Center) is for research use only and not for use in diagnostic or therapeutic procedures.

**MSX2 Antibody (Center) - Protein Information**

**Name** MSX2

**Synonyms** HOX8

**Function** Acts as a transcriptional regulator in bone development. Represses the ALPL promoter activity and antagonizes the stimulatory effect of DLX5 on ALPL expression during osteoblast differentiation. Probable morphogenetic role. May play a role in limb-pattern formation. In osteoblasts, suppresses transcription driven by the osteocalcin FGF response element (OCFRE). Binds to the homeodomain-response element of the ALPL promoter.

**Cellular Location**

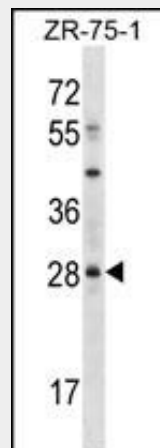
Nucleus.

### MSX2 Antibody (Center) - Protocols

Provided below are standard protocols that you may find useful for product applications.

- [Western Blot](#)
- [Blocking Peptides](#)
- [Dot Blot](#)
- [Immunohistochemistry](#)
- [Immunofluorescence](#)
- [Immunoprecipitation](#)
- [Flow Cytometry](#)
- [Cell Culture](#)

### MSX2 Antibody (Center) - Images



MSX2 Antibody (Center) (Cat. #AP14677c) western blot analysis in ZR-75-1 cell line lysates (35ug/lane). This demonstrates the MSX2 antibody detected the MSX2 protein (arrow).

### MSX2 Antibody (Center) - Background

This gene encodes a member of the muscle segment homeobox gene family. The encoded protein is a transcriptional repressor whose normal activity may establish a balance between survival and apoptosis of neural crest-derived cells required for proper craniofacial morphogenesis. The encoded protein may also have a role in promoting cell growth under certain conditions and may be an important target for the RAS signaling pathways. Mutations in

this gene are associated with parietal foramina 1 and craniosynostosis type 2.

#### **MSX2 Antibody (Center) - References**

Nikopensius, T., et al. Birth Defects Res. Part A Clin. Mol. Teratol. 88(9):748-756(2010)

Satoh, K., et al. J. Gastroenterol. 45(7):763-770(2010)

Doi, T., et al. J. Pediatr. Surg. 45(6):1187-1191(2010)

Jagomagi, T., et al. Eur. J. Oral Sci. 118(3):213-220(2010)

Jugessur, A., et al. PLoS ONE 5 (7), E11493 (2010) :