

CBX8 Antibody (Center)
Affinity Purified Rabbit Polyclonal Antibody (Pab)
Catalog # AP14665C

Specification

CBX8 Antibody (Center) - Product Information

Application	WB,E
Primary Accession	O9HC52
Other Accession	NP_065700.1
Reactivity	Mouse
Host	Rabbit
Clonality	Polyclonal
Isotype	Rabbit IgG
Calculated MW	43396
Antigen Region	161-189

CBX8 Antibody (Center) - Additional Information

Gene ID 57332

Other Names

Chromobox protein homolog 8, Polycomb 3 homolog, Pc3, hPc3, Rectachrome 1, CBX8, PC3, RC1

Target/Specificity

This CBX8 antibody is generated from rabbits immunized with a KLH conjugated synthetic peptide between 161-189 amino acids from the Central region of human CBX8.

Dilution

WB~~1:1000

Format

Purified polyclonal antibody supplied in PBS with 0.09% (W/V) sodium azide. This antibody is purified through a protein A column, followed by peptide affinity purification.

Storage

Maintain refrigerated at 2-8°C for up to 2 weeks. For long term storage store at -20°C in small aliquots to prevent freeze-thaw cycles.

Precautions

CBX8 Antibody (Center) is for research use only and not for use in diagnostic or therapeutic procedures.

CBX8 Antibody (Center) - Protein Information

Name CBX8

Synonyms PC3, RC1

Function Component of a Polycomb group (PcG) multiprotein PRC1-like complex, a complex class required to maintain the transcriptionally repressive state of many genes, including Hox genes, throughout development. PcG PRC1 complex acts via chromatin remodeling and modification of histones; it mediates monoubiquitination of histone H2A 'Lys-119', rendering chromatin heritably changed in its expressibility.

Cellular Location

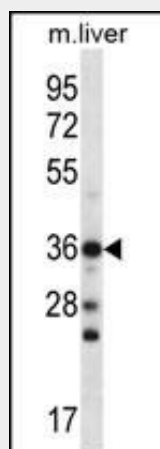
Nucleus.

CBX8 Antibody (Center) - Protocols

Provided below are standard protocols that you may find useful for product applications.

- [Western Blot](#)
- [Blocking Peptides](#)
- [Dot Blot](#)
- [Immunohistochemistry](#)
- [Immunofluorescence](#)
- [Immunoprecipitation](#)
- [Flow Cytometry](#)
- [Cell Culture](#)

CBX8 Antibody (Center) - Images



CBX8 Antibody (Center) (Cat. #AP14665c) western blot analysis in mouse liver tissue lysates (35ug/lane). This demonstrates the CBX8 antibody detected the CBX8 protein (arrow).

CBX8 Antibody (Center) - Background

Component of the Polycomb group (PcG) multiprotein PRC1 complex, a complex required to maintain the transcriptionally repressive state of many genes, including Hox genes, throughout development. PcG PRC1 complex acts via chromatin remodeling and modification of histones; it mediates monoubiquitination of histone H2A 'Lys-119', rendering chromatin heritably changed in its expressibility.

CBX8 Antibody (Center) - References

- Dietrich, N., et al. EMBO J. 26(6):1637-1648(2007)
Olsen, J.V., et al. Cell 127(3):635-648(2006)
Stelzl, U., et al. Cell 122(6):957-968(2005)

Obuse, C., et al. Genes Cells 9(2):105-120(2004)
Levine, S.S., et al. Mol. Cell. Biol. 22(17):6070-6078(2002)