

**SZRD1 Antibody (N-term)**  
**Affinity Purified Rabbit Polyclonal Antibody (Pab)**  
**Catalog # AP14646a**

**Specification**

---

**SZRD1 Antibody (N-term) - Product Information**

Application	WB,E
Primary Accession	<a href="#">O7Z422</a>
Other Accession	<a href="#">O5XIA2</a> , <a href="#">O6NXN1</a> , <a href="#">O5ZK25</a> , <a href="#">O2KI04</a> , <a href="#">NP_001108072.1</a> , <a href="#">NP_056424.1</a>
Reactivity	Human, Mouse
Predicted	Bovine, Chicken, Rat
Host	Rabbit
Clonality	Polyclonal
Isotype	Rabbit IgG
Antigen Region	7-36

**SZRD1 Antibody (N-term) - Additional Information**

**Gene ID** 26099

**Other Names**

SUZ domain-containing protein 1, Putative MAPK-activating protein PM18/PM20/PM22, SZRD1, C1orf144

**Target/Specificity**

This C1orf144 antibody is generated from rabbits immunized with a KLH conjugated synthetic peptide between 7-36 amino acids from the N-terminal region of human C1orf144.

**Dilution**

WB~~1:1000

**Format**

Purified polyclonal antibody supplied in PBS with 0.09% (W/V) sodium azide. This antibody is purified through a protein A column, followed by peptide affinity purification.

**Storage**

Maintain refrigerated at 2-8°C for up to 2 weeks. For long term storage store at -20°C in small aliquots to prevent freeze-thaw cycles.

**Precautions**

SZRD1 Antibody (N-term) is for research use only and not for use in diagnostic or therapeutic procedures.

**SZRD1 Antibody (N-term) - Protein Information**

**Name** SZRD1

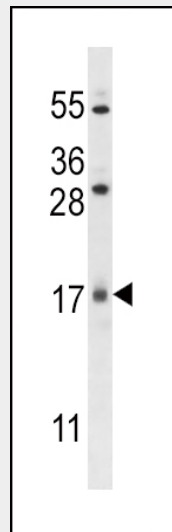
## Synonyms C1orf144

### SZRD1 Antibody (N-term) - Protocols

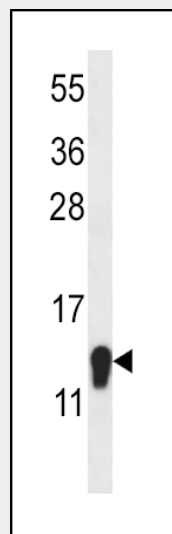
Provided below are standard protocols that you may find useful for product applications.

- [Western Blot](#)
- [Blocking Peptides](#)
- [Dot Blot](#)
- [Immunohistochemistry](#)
- [Immunofluorescence](#)
- [Immunoprecipitation](#)
- [Flow Cytometry](#)
- [Cell Culture](#)

### SZRD1 Antibody (N-term) - Images



C1orf144 Antibody (N-term) (Cat. #AP14646a) western blot analysis in U251 cell line lysates (35ug/lane). This demonstrates the C1orf144 antibody detected the C1orf144 protein (arrow).



C1orf144 Antibody (N-term) (Cat. #AP14646a) western blot analysis in mouse liver tissue lysates (35ug/lane). This demonstrates the C1orf144 antibody detected the C1orf144 protein (arrow).

#### **SZRD1 Antibody (N-term) - Background**

Belongs to the UPF0485 family. The function of this protein remains unknown.

#### **SZRD1 Antibody (N-term) - References**

Lamesch, P., et al. Genomics 89(3):307-315(2007)  
Matsuda, A., et al. Oncogene 22(21):3307-3318(2003)