

**MIPEP Antibody (Center)**  
**Purified Rabbit Polyclonal Antibody (Pab)**  
**Catalog # AP1459c****Specification**

---

**MIPEP Antibody (Center) - Product Information**

Application	<b>WB, IHC-P,E</b>
Primary Accession	<a href="#">Q99797</a>
Reactivity	<b>Human</b>
Host	<b>Rabbit</b>
Clonality	<b>Polyclonal</b>
Isotype	<b>Rabbit IgG</b>
Calculated MW	<b>80641</b>
Antigen Region	<b>307-336</b>

**MIPEP Antibody (Center) - Additional Information****Gene ID** 4285**Other Names**

Mitochondrial intermediate peptidase, MIP, MIPEP, MIP

**Target/Specificity**

This MIPEP antibody is generated from rabbits immunized with a KLH conjugated synthetic peptide between 307-336 amino acids from the Central region of human MIPEP.

**Dilution**WB~~1:1000  
IHC-P~~1:10~50**Format**

Purified polyclonal antibody supplied in PBS with 0.09% (W/V) sodium azide. This antibody is prepared by Saturated Ammonium Sulfate (SAS) precipitation followed by dialysis against PBS.

**Storage**

Maintain refrigerated at 2-8°C for up to 2 weeks. For long term storage store at -20°C in small aliquots to prevent freeze-thaw cycles.

**Precautions**

MIPEP Antibody (Center) is for research use only and not for use in diagnostic or therapeutic procedures.

**MIPEP Antibody (Center) - Protein Information****Name** MIPEP**Synonyms** MIP

**Function** Cleaves proteins, imported into the mitochondrion, to their mature size.

**Cellular Location**

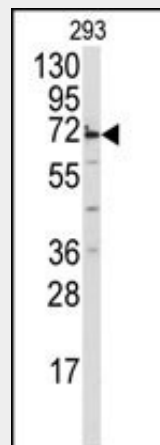
Mitochondrion matrix.

**MIPEP Antibody (Center) - Protocols**

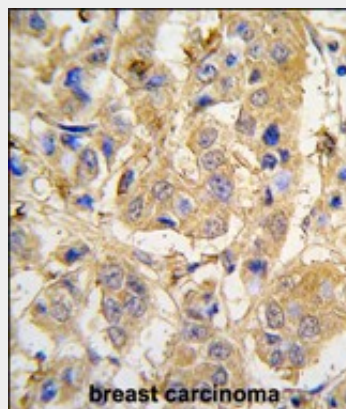
Provided below are standard protocols that you may find useful for product applications.

- [Western Blot](#)
- [Blocking Peptides](#)
- [Dot Blot](#)
- [Immunohistochemistry](#)
- [Immunofluorescence](#)
- [Immunoprecipitation](#)
- [Flow Cytometry](#)
- [Cell Culture](#)

**MIPEP Antibody (Center) - Images**



Western blot analysis of anti-MIPEP Antibody (Center) (Cat.#AP1459c) in 293 cell line lysates (35ug/lane). MIPEP (arrow) was detected using the purified Pab.



Formalin-fixed and paraffin-embedded human breast carcinoma tissue reacted with MIPEP antibody (Center), which was peroxidase-conjugated to the secondary antibody, followed by DAB staining. This data demonstrates the use of this antibody for immunohistochemistry; clinical

relevance has not been evaluated.

#### **MIPEP Antibody (Center) - Background**

MIPEP performs the final step in processing a specific class of nuclear-encoded proteins targeted to the mitochondrial matrix or inner membrane. This protein is primarily involved in the maturation of oxidative phosphorylation (OXPHOS)-related proteins. It may contribute to the functional effects of frataxin deficiency and the clinical manifestations of Friedreich ataxia.

#### **MIPEP Antibody (Center) - References**

Chew A., Genomics 40:493-496(1997).