

ORAI1 Antibody (C-term)
Affinity Purified Rabbit Polyclonal Antibody (Pab)
Catalog # AP14588B

Specification

ORAI1 Antibody (C-term) - Product Information

Application	WB,E
Primary Accession	O96D31
Other Accession	NP_116179.2
Reactivity	Human
Host	Rabbit
Clonality	Polyclonal
Isotype	Rabbit IgG
Calculated MW	32668
Antigen Region	269-298

ORAI1 Antibody (C-term) - Additional Information

Gene ID 84876

Other Names

Calcium release-activated calcium channel protein 1, Protein orai-1, Transmembrane protein 142A, ORAI1, CRACM1, TMEM142A

Target/Specificity

This ORAI1 antibody is generated from rabbits immunized with a KLH conjugated synthetic peptide between 269-298 amino acids from the C-terminal region of human ORAI1.

Dilution

WB~~1:1000

Format

Purified polyclonal antibody supplied in PBS with 0.09% (W/V) sodium azide. This antibody is purified through a protein A column, followed by peptide affinity purification.

Storage

Maintain refrigerated at 2-8°C for up to 2 weeks. For long term storage store at -20°C in small aliquots to prevent freeze-thaw cycles.

Precautions

ORAI1 Antibody (C-term) is for research use only and not for use in diagnostic or therapeutic procedures.

ORAI1 Antibody (C-term) - Protein Information

Name ORAI1 {ECO:0000303|PubMed:16921383, ECO:0000312|HGNC:HGNC:25896}

Function Pore-forming subunit of two major inward rectifying Ca(2+) channels at the plasma

membrane: Ca(2+) release-activated Ca(2+) (CRAC) channels and arachidonate-regulated Ca(2+)-selective (ARC) channels (Probable) (PubMed:[16645049](#), PubMed:[16733527](#), PubMed:[16807233](#), PubMed:[16921383](#), PubMed:[19249086](#), PubMed:[19706554](#), PubMed:[23307288](#), PubMed:[26956484](#), PubMed:[28219928](#)). Assembles with ORAI2 and ORAI3 to form hexameric CRAC channels that mediate Ca(2+) influx upon depletion of endoplasmic reticulum Ca(2+) store and channel activation by Ca(2+) sensor STIM1, a process known as store-operated Ca(2+) entry (SOCE). Various pore subunit combinations may account for distinct CRAC channel spatiotemporal and cell-type specific dynamics. ORAI1 mainly contributes to the generation of Ca(2+) plateaus involved in sustained Ca(2+) entry and is dispensable for cytosolic Ca(2+) oscillations, whereas ORAI2 and ORAI3 generate oscillatory patterns. CRAC channels assemble in Ca(2+) signaling microdomains where Ca(2+) influx is coupled to calmodulin and calcineurin signaling and activation of NFAT transcription factors recruited to ORAI1 via AKAP5. Activates NFATC2/NFAT1 and NFATC3/NFAT4-mediated transcriptional responses. CRAC channels are the main pathway for Ca(2+) influx in T cells and promote the immune response to pathogens by activating NFAT-dependent cytokine and chemokine transcription (PubMed:[16582901](#), PubMed:[17442569](#), PubMed:[19182790](#), PubMed:[20354224](#), PubMed:[22641696](#), PubMed:[26221052](#), PubMed:[32415068](#), PubMed:[33941685](#)). Assembles with ORAI3 to form channels that mediate store-independent Ca(2+) influx in response to inflammatory metabolites arachidonate or its derivative leukotriene C4, termed ARC and LRC channels respectively (PubMed:[19622606](#), PubMed:[32415068](#)). Plays a prominent role in Ca(2+) influx at the basolateral membrane of mammary epithelial cells independently of the Ca(2+) content of endoplasmic reticulum or Golgi stores. May mediate transepithelial transport of large quantities of Ca(2+) for milk secretion (By similarity) (PubMed:[20887894](#)).

Cellular Location

Cell membrane; Multi-pass membrane protein. Basolateral cell membrane {ECO:0000250|UniProtKB:Q8BWG9}; Multi-pass membrane protein. Note=Upon store depletion, colocalizes with STIM1 in membrane punctae at ER-PM junctions (PubMed:19182790, PubMed:19249086, PubMed:26221052, PubMed:27185316) [Isoform beta]: Cell membrane

Tissue Location

Expressed in naive CD4 and CD8 T cells (at protein level) (PubMed:26956484). Expressed at similar levels in naive and effector T helper cells (PubMed:20354224)

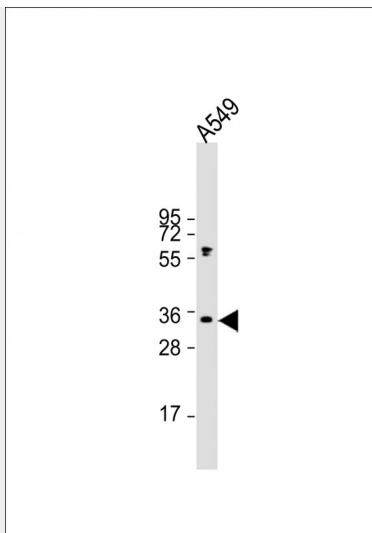
ORAI1 Antibody (C-term) - Protocols

Provided below are standard protocols that you may find useful for product applications.

- [Western Blot](#)
- [Blocking Peptides](#)
- [Dot Blot](#)
- [Immunohistochemistry](#)
- [Immunofluorescence](#)
- [Immunoprecipitation](#)
- [Flow Cytometry](#)
- [Cell Culture](#)

ORAI1 Antibody (C-term) - Images





Anti-ORAI1 Antibody (C-term) at 1:1000 dilution + A549 whole cell lysate Lysates/proteins at 20 μ g per lane. Secondary Goat Anti-Rabbit IgG, (H+L), Peroxidase conjugated at 1/10000 dilution. Predicted band size : 33 kDa Blocking/Dilution buffer: 5% NFDN/TBST.

ORAI1 Antibody (C-term) - Background

CRACM1 is a plasma membrane protein essential for store-operated calcium entry (Vig et al., 2006 [PubMed 16645049]).

ORAI1 Antibody (C-term) - References

Feng, M., et al. Cell 143(1):84-98(2010)
Kawasaki, T., et al. J. Biol. Chem. 285(33):25720-25730(2010)
Motiani, R.K., et al. J. Biol. Chem. 285(25):19173-19183(2010)
Zhou, Y., et al. Proc. Natl. Acad. Sci. U.S.A. 107(11):4896-4901(2010)
Bogeski, I., et al. Sci Signal 3 (115), RA24 (2010) :