

**PSMD10 Antibody (C-term)**  
**Affinity Purified Rabbit Polyclonal Antibody (Pab)**  
**Catalog # AP14586b**

**Specification**

---

**PSMD10 Antibody (C-term) - Product Information**

Application	WB,E
Primary Accession	<a href="#">O75832</a>
Other Accession	<a href="#">O9Z2X3</a> , <a href="#">O9Z2X2</a> , <a href="#">NP_002805.1</a> , <a href="#">NP_736606.1</a>
Reactivity	Human
Predicted	Mouse, Rat
Host	Rabbit
Clonality	Polyclonal
Isotype	Rabbit IgG
Calculated MW	24428
Antigen Region	184-213

**PSMD10 Antibody (C-term) - Additional Information**

**Gene ID** 5716

**Other Names**

26S proteasome non-ATPase regulatory subunit 10, 26S proteasome regulatory subunit p28, Gankyrin, p28(GANK), PSMD10

**Target/Specificity**

This PSMD10 antibody is generated from rabbits immunized with a KLH conjugated synthetic peptide between 184-213 amino acids from the C-terminal region of human PSMD10.

**Dilution**

WB~~1:1000

**Format**

Purified polyclonal antibody supplied in PBS with 0.09% (W/V) sodium azide. This antibody is purified through a protein A column, followed by peptide affinity purification.

**Storage**

Maintain refrigerated at 2-8°C for up to 2 weeks. For long term storage store at -20°C in small aliquots to prevent freeze-thaw cycles.

**Precautions**

PSMD10 Antibody (C-term) is for research use only and not for use in diagnostic or therapeutic procedures.

**PSMD10 Antibody (C-term) - Protein Information**

**Name** PSMD10

**Function** Acts as a chaperone during the assembly of the 26S proteasome, specifically of the PA700/19S regulatory complex (RC). In the initial step of the base subcomplex assembly is part of an intermediate PSMD10:PSMC4:PSMC5:PAAF1 module which probably assembles with a PSMD5:PSMC2:PSMC1:PSMD2 module. Independently of the proteasome, regulates EGF-induced AKT activation through inhibition of the RHOA/ROCK/PTEN pathway, leading to prolonged AKT activation. Plays an important role in RAS-induced tumorigenesis.

**Cellular Location**

Cytoplasm. Nucleus

**Tissue Location**

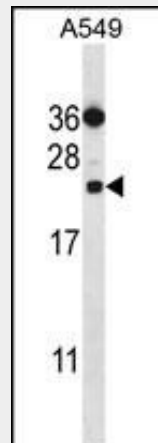
Tends to be up-regulated in cancer cells with RAS mutations, including lung cancers and adenocarcinomas (at protein level).

**PSMD10 Antibody (C-term) - Protocols**

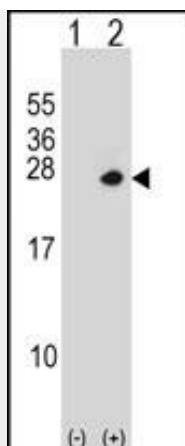
Provided below are standard protocols that you may find useful for product applications.

- [Western Blot](#)
- [Blocking Peptides](#)
- [Dot Blot](#)
- [Immunohistochemistry](#)
- [Immunofluorescence](#)
- [Immunoprecipitation](#)
- [Flow Cytometry](#)
- [Cell Culture](#)

**PSMD10 Antibody (C-term) - Images**



PSMD10 Antibody (C-term) (Cat. #AP14586b) western blot analysis in A549 cell line lysates (35ug/lane). This demonstrates the PSMD10 antibody detected the PSMD10 protein (arrow).



Western blot analysis of PSMD10 (arrow) using rabbit polyclonal PSMD10 Antibody (C-term) (Cat. #AP14586b). 293 cell lysates (2 ug/lane) either nontransfected (Lane 1) or transiently transfected (Lane 2) with the PSMD10 gene.

### **PSMD10 Antibody (C-term) - Background**

The 26S proteasome is a multicatalytic proteinase complex with a highly ordered structure composed of 2 complexes, a 20S core and a 19S regulator. The 20S core is composed of 4 rings of 28 non-identical subunits; 2 rings are composed of 7 alpha subunits and 2 rings are composed of 7 beta subunits. The 19S regulator is composed of a base, which contains 6 ATPase subunits and 2 non-ATPase subunits, and a lid, which contains up to 10 non-ATPase subunits. Proteasomes are distributed throughout eukaryotic cells at a high concentration and cleave peptides in an ATP/ubiquitin-dependent process in a non-lysosomal pathway. An essential function of a modified proteasome, the immunoproteasome, is the processing of class I MHC peptides. This gene encodes a non-ATPase subunit of the 19S regulator. Two transcripts encoding different isoforms have been described. Pseudogenes have been identified on chromosomes 3 and 20.

### **PSMD10 Antibody (C-term) - References**

Meng, Y., et al. *Cancer Lett.* 297(1):9-17(2010)  
Man, J.H., et al. *J. Clin. Invest.* 120(8):2829-2841(2010)  
Piton, A., et al. *Mol. Psychiatry* (2010) In press :  
Serquera, D., et al. *Biophys. J.* 98(7):1294-1301(2010)  
Tang, S., et al. *Cancer Biol. Ther.* 9(2):88-95(2010)