

**TRPC3 Antibody (C-term)**  
**Affinity Purified Rabbit Polyclonal Antibody (Pab)**  
**Catalog # AP14579b****Specification**

---

**TRPC3 Antibody (C-term) - Product Information**

Application	<b>WB,E</b>
Primary Accession	<a href="#">O13507</a>
Other Accession	<a href="#">O9JMI9</a> , <a href="#">O9OZC1</a> , <a href="#">NP_003296.1</a> , <a href="#">NP_001124170.1</a>
Reactivity	<b>Human</b>
Predicted	<b>Mouse, Rat</b>
Host	<b>Rabbit</b>
Clonality	<b>Polyclonal</b>
Isotype	<b>Rabbit IgG</b>
Calculated MW	<b>105538</b>
Antigen Region	<b>765-793</b>

**TRPC3 Antibody (C-term) - Additional Information****Gene ID** 7222**Other Names**

Short transient receptor potential channel 3, TrpC3, Transient receptor protein 3, TRP-3, hTrp-3, hTrp3, TRPC3, TRP3

**Target/Specificity**

This TRPC3 antibody is generated from rabbits immunized with a KLH conjugated synthetic peptide between 765-793 amino acids from the C-terminal region of human TRPC3.

**Dilution**

WB~~1:1000

**Format**

Purified polyclonal antibody supplied in PBS with 0.09% (W/V) sodium azide. This antibody is purified through a protein A column, followed by peptide affinity purification.

**Storage**

Maintain refrigerated at 2-8°C for up to 2 weeks. For long term storage store at -20°C in small aliquots to prevent freeze-thaw cycles.

**Precautions**

TRPC3 Antibody (C-term) is for research use only and not for use in diagnostic or therapeutic procedures.

**TRPC3 Antibody (C-term) - Protein Information****Name** TRPC3

## Synonyms TRP3

**Function** Forms a receptor-activated non-selective calcium permeant cation channel (PubMed:[29726814](#), PubMed:[30139744](#), PubMed:[35051376](#), PubMed:[9417057](#), PubMed:[9930701](#), PubMed:[10611319](#)).

## Cellular Location

Cell membrane; Multi-pass membrane protein

## Tissue Location

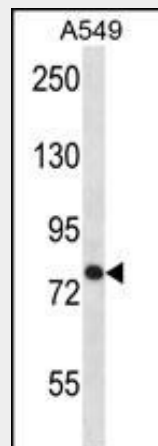
Expressed predominantly in brain and at much lower levels in ovary, colon, small intestine, lung, prostate, placenta and testis

## TRPC3 Antibody (C-term) - Protocols

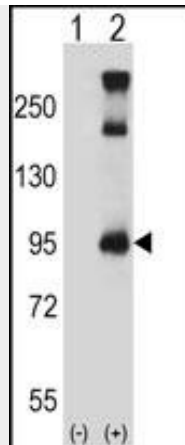
Provided below are standard protocols that you may find useful for product applications.

- [Western Blot](#)
- [Blocking Peptides](#)
- [Dot Blot](#)
- [Immunohistochemistry](#)
- [Immunofluorescence](#)
- [Immunoprecipitation](#)
- [Flow Cytometry](#)
- [Cell Culture](#)

## TRPC3 Antibody (C-term) - Images



TRPC3 Antibody (C-term) (Cat. #AP14579b) western blot analysis in A549 cell line lysates (35ug/lane). This demonstrates the TRPC3 antibody detected the TRPC3 protein (arrow).



Western blot analysis of TRPC3 (arrow) using rabbit polyclonal TRPC3 Antibody (C-term) (Cat. #AP14579b). 293 cell lysates (2 ug/lane) either nontransfected (Lane 1) or transiently transfected (Lane 2) with the TRPC3 gene.

#### **TRPC3 Antibody (C-term) - Background**

Thought to form a receptor-activated non-selective calcium permeant cation channel. Probably is operated by a phosphatidylinositol second messenger system activated by receptor tyrosine kinases or G-protein coupled receptors. Activated by diacylglycerol (DAG) in a membrane-delimited fashion, independently of protein kinase C, and by inositol-1,4,5-triphosphate receptors (ITPR) with bound IP3. May also be activated by internal calcium store depletion.

#### **TRPC3 Antibody (C-term) - References**

- Shimada, M., et al. Hum. Genet. 128(4):433-441(2010)
- Smedlund, K., et al. Circ. Res. 106(9):1479-1488(2010)
- Kiyonaka, S., et al. Yakugaku Zasshi 130(3):303-311(2010)
- Nishida, M., et al. Yakugaku Zasshi 130(3):295-302(2010)
- Shirakawa, H., et al. Yakugaku Zasshi 130(3):281-287(2010)