

SEMG1 Antibody (N-term)
Affinity Purified Rabbit Polyclonal Antibody (Pab)
Catalog # AP14543a

Specification

SEMG1 Antibody (N-term) - Product Information

Application	WB,E
Primary Accession	P04279
Other Accession	NP_002998.1
Reactivity	Human
Host	Rabbit
Clonality	Polyclonal
Isotype	Rabbit IgG
Calculated MW	52131
Antigen Region	92-121

SEMG1 Antibody (N-term) - Additional Information

Gene ID 6406

Other Names

Semenogelin-1, Semenogelin I, SGI, Alpha-inhibin-92, Alpha-inhibin-31, Seminal basic protein, SEMG1, SEMG

Target/Specificity

This SEMG1 antibody is generated from rabbits immunized with a KLH conjugated synthetic peptide between 92-121 amino acids from the N-terminal region of human SEMG1.

Dilution

WB~~1:1000

Format

Purified polyclonal antibody supplied in PBS with 0.09% (W/V) sodium azide. This antibody is purified through a protein A column, followed by peptide affinity purification.

Storage

Maintain refrigerated at 2-8°C for up to 2 weeks. For long term storage store at -20°C in small aliquots to prevent freeze-thaw cycles.

Precautions

SEMG1 Antibody (N-term) is for research use only and not for use in diagnostic or therapeutic procedures.

SEMG1 Antibody (N-term) - Protein Information

Name SEMG1

Synonyms SEMG

Function Predominant protein in semen. It participates in the formation of a gel matrix entrapping the accessory gland secretions and ejaculated spermatozoa. Fragments of semenogelin and/or fragments of the related proteins may contribute to the activation of progressive sperm movements as the gel-forming proteins are fragmented by KLK3/PSA.

Cellular Location

Secreted.

Tissue Location

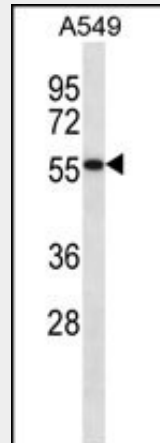
Seminal vesicle.

SEMG1 Antibody (N-term) - Protocols

Provided below are standard protocols that you may find useful for product applications.

- [Western Blot](#)
- [Blocking Peptides](#)
- [Dot Blot](#)
- [Immunohistochemistry](#)
- [Immunofluorescence](#)
- [Immunoprecipitation](#)
- [Flow Cytometry](#)
- [Cell Culture](#)

SEMG1 Antibody (N-term) - Images



SEMG1 Antibody (N-term) (Cat. #AP14543a) western blot analysis in A549 cell line lysates (35ug/lane). This demonstrates the SEMG1 antibody detected the SEMG1 protein (arrow).

SEMG1 Antibody (N-term) - Background

The protein encoded by this gene is the predominant protein in semen. The encoded secreted protein is involved in the formation of a gel matrix that encases ejaculated spermatozoa. The prostate-specific antigen (PSA) protease processes this protein into smaller peptides, with each possibly having a separate function. The proteolysis process breaks down the gel matrix and allows the spermatozoa to move more freely.

SEMG1 Antibody (N-term) - References

Mitra, A., et al. Biol. Reprod. 82(3):489-496(2010)
Yoshida, K., et al. Cell Motil. Cytoskeleton 66(2):99-108(2009)
Ahmed, S.U., et al. Cytotherapy 11(2):238-244(2009)
Edstrom, A.M., et al. J. Immunol. 181(5):3413-3421(2008)
Emami, N., et al. J. Biol. Chem. 283(28):19561-19569(2008)