

**ADAM32 Antibody (N-term)**  
**Affinity Purified Rabbit Polyclonal Antibody (Pab)**  
**Catalog # AP14513a**

**Specification**

---

**ADAM32 Antibody (N-term) - Product Information**

Application	WB,E
Primary Accession	<a href="#">Q8TC27</a>
Other Accession	<a href="#">NP_659441.3</a>
Reactivity	Human
Host	Rabbit
Clonality	Polyclonal
Isotype	Rabbit IgG
Calculated MW	87948
Antigen Region	141-169

**ADAM32 Antibody (N-term) - Additional Information**

**Gene ID** 203102

**Other Names**

Disintegrin and metalloproteinase domain-containing protein 32, ADAM 32, ADAM32

**Target/Specificity**

This ADAM32 antibody is generated from rabbits immunized with a KLH conjugated synthetic peptide between 141-169 amino acids from the N-terminal region of human ADAM32.

**Dilution**

WB~~1:1000

**Format**

Purified polyclonal antibody supplied in PBS with 0.09% (W/V) sodium azide. This antibody is purified through a protein A column, followed by peptide affinity purification.

**Storage**

Maintain refrigerated at 2-8°C for up to 2 weeks. For long term storage store at -20°C in small aliquots to prevent freeze-thaw cycles.

**Precautions**

ADAM32 Antibody (N-term) is for research use only and not for use in diagnostic or therapeutic procedures.

**ADAM32 Antibody (N-term) - Protein Information**

**Name** ADAM32

**Function** May play a role in sperm development and fertilization This is a non-catalytic metalloprotease-like protein.

**Cellular Location**

Membrane; Single-pass type I membrane protein

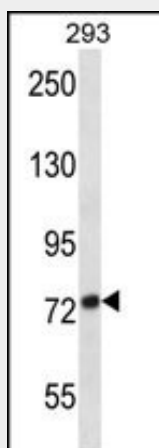
**Tissue Location**

Testis specific..

**ADAM32 Antibody (N-term) - Protocols**

Provided below are standard protocols that you may find useful for product applications.

- [Western Blot](#)
- [Blocking Peptides](#)
- [Dot Blot](#)
- [Immunohistochemistry](#)
- [Immunofluorescence](#)
- [Immunoprecipitation](#)
- [Flow Cytometry](#)
- [Cell Culture](#)

**ADAM32 Antibody (N-term) - Images**

ADAM32 Antibody (N-term) (Cat. #AP14513a) western blot analysis in 293 cell line lysates (35ug/lane). This demonstrates the ADAM32 antibody detected the ADAM32 protein (arrow).

**ADAM32 Antibody (N-term) - Background**

ADAM32 may play a role in sperm development and fertilization. This is a non-catalytic metalloprotease-like protein (By similarity).

**ADAM32 Antibody (N-term) - References**

Rose, J. Phd, et al. Mol. Med. (2010) In press :  
Olsen, J.V., et al. Cell 127(3):635-648(2006)  
Olsen, J.V., et al. Cell 127(3):635-648(2006)  
Zhang, Z., et al. Protein Sci. 13(10):2819-2824(2004)  
Clark, H.F., et al. Genome Res. 13(10):2265-2270(2003)