

SPRED1 Antibody
Affinity Purified Rabbit Polyclonal Antibody (Pab)
Catalog # AP1449e

Specification

SPRED1 Antibody - Product Information

| | |
|-------------------|------------------------|
| Application | WB, FC,E |
| Primary Accession | O7Z699 |
| Reactivity | Human |
| Host | Rabbit |
| Clonality | Polyclonal |
| Isotype | Rabbit IgG |
| Calculated MW | 50477 |

SPRED1 Antibody - Additional Information

Gene ID 161742

Other Names

Sprouty-related, EVH1 domain-containing protein 1, Spred-1, hSpred1, SPRED1

Target/Specificity

This SPRED1 antibody is generated from rabbits immunized with human SPRED1 recombinant protein.

Dilution

WB~~1:1000
FC~~1:10~50

Format

Purified polyclonal antibody supplied in PBS with 0.09% (W/V) sodium azide. This antibody is purified through a protein A column, followed by peptide affinity purification.

Storage

Maintain refrigerated at 2-8°C for up to 2 weeks. For long term storage store at -20°C in small aliquots to prevent freeze-thaw cycles.

Precautions

SPRED1 Antibody is for research use only and not for use in diagnostic or therapeutic procedures.

SPRED1 Antibody - Protein Information

Name SPRED1

Function Tyrosine kinase substrate that inhibits growth-factor- mediated activation of MAP kinase (By similarity). Negatively regulates hematopoiesis of bone marrow (By similarity). Inhibits fibroblast growth factor (FGF)-induced retinal lens fiber differentiation, probably by inhibiting FGF-mediated phosphorylation of ERK1/2 (By similarity). Attenuates actin stress fiber formation via

inhibition of TESK1-mediated phosphorylation of cofilin (PubMed:[18216281](#)). Inhibits TGF β -induced epithelial-to-mesenchymal transition in lens epithelial cells (By similarity).

Cellular Location

Cell membrane; Peripheral membrane protein. Membrane, caveola; Peripheral membrane protein. Nucleus Note=Localized in cholesterol-rich membrane raft/caveola fractions

Tissue Location

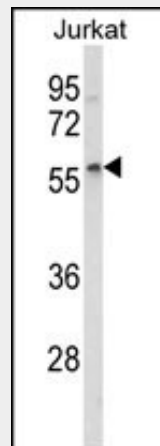
Weakly expressed in embryonic cell line HEK293.

SPRED1 Antibody - Protocols

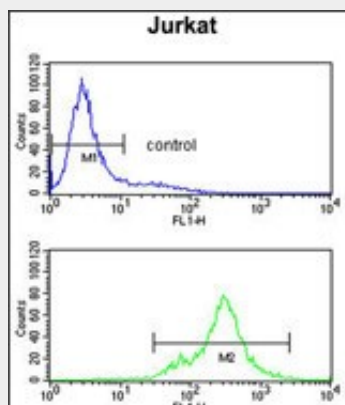
Provided below are standard protocols that you may find useful for product applications.

- [Western Blot](#)
- [Blocking Peptides](#)
- [Dot Blot](#)
- [Immunohistochemistry](#)
- [Immunofluorescence](#)
- [Immunoprecipitation](#)
- [Flow Cytometry](#)
- [Cell Culture](#)

SPRED1 Antibody - Images



Western blot analysis of SPRED1 Antibody (Cat. #AP1449e) in Jurkat cell line lysates (35ug/lane). SPRED1 (arrow) was detected using the purified Pab.



SPRED1 Antibody (Cat. #AP1449e) flow cytometry analysis of Jurkat cells (bottom histogram) compared to a negative control cell (top histogram). FITC-conjugated goat-anti-rabbit secondary antibodies were used for the analysis.

SPRED1 Antibody - Background

SPRED1 is a tyrosine kinase substrate that inhibits growth-factor-mediated activation of MAP kinase.

SPRED1 Antibody - References

Brems, H., Nat. Genet. 39 (9), 1120-1126 (2007)
Szafranski, K., Genome Biol. 8 (8), R154 (2007)
Yoshida, T., Oncogene 25 (45), 6056-6066 (2006)
King, J.A., Biochem. J. 388 (PT 2), 445-454 (2005)