

SPRED1 Antibody (N-term)
Purified Rabbit Polyclonal Antibody (Pab)
Catalog # AP1449d**Specification**

SPRED1 Antibody (N-term) - Product Information

Application	WB, IHC-P,E
Primary Accession	O7Z699
Other Accession	O92458
Reactivity	Human
Predicted	Mouse
Host	Rabbit
Clonality	Polyclonal
Isotype	Rabbit IgG
Calculated MW	50477
Antigen Region	44-73

SPRED1 Antibody (N-term) - Additional Information**Gene ID** 161742**Other Names**

Sprouty-related, EVH1 domain-containing protein 1, Spred-1, hSpred1, SPRED1

Target/Specificity

This SPRED1 antibody is generated from rabbits immunized with a KLH conjugated synthetic peptide between 44-73 amino acids from the N-terminal region of human SPRED1.

DilutionWB~~1:1000
IHC-P~~1:10~50**Format**

Purified polyclonal antibody supplied in PBS with 0.09% (W/V) sodium azide. This antibody is prepared by Saturated Ammonium Sulfate (SAS) precipitation followed by dialysis against PBS.

Storage

Maintain refrigerated at 2-8°C for up to 2 weeks. For long term storage store at -20°C in small aliquots to prevent freeze-thaw cycles.

Precautions

SPRED1 Antibody (N-term) is for research use only and not for use in diagnostic or therapeutic procedures.

SPRED1 Antibody (N-term) - Protein Information**Name** SPRED1

Function Tyrosine kinase substrate that inhibits growth-factor- mediated activation of MAP kinase (By similarity). Negatively regulates hematopoiesis of bone marrow (By similarity). Inhibits fibroblast growth factor (FGF)-induced retinal lens fiber differentiation, probably by inhibiting FGF-mediated phosphorylation of ERK1/2 (By similarity). Attenuates actin stress fiber formation via inhibition of TESK1-mediated phosphorylation of cofilin (PubMed:[18216281](#)). Inhibits TGFB-induced epithelial-to-mesenchymal transition in lens epithelial cells (By similarity).

Cellular Location

Cell membrane; Peripheral membrane protein. Membrane, caveola; Peripheral membrane protein. Nucleus Note=Localized in cholesterol-rich membrane raft/caveola fractions

Tissue Location

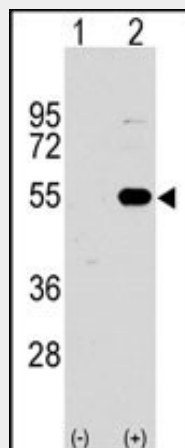
Weakly expressed in embryonic cell line HEK293.

SPRED1 Antibody (N-term) - Protocols

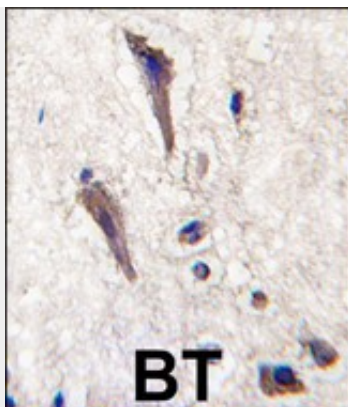
Provided below are standard protocols that you may find useful for product applications.

- [Western Blot](#)
- [Blocking Peptides](#)
- [Dot Blot](#)
- [Immunohistochemistry](#)
- [Immunofluorescence](#)
- [Immunoprecipitation](#)
- [Flow Cytometry](#)
- [Cell Culture](#)

SPRED1 Antibody (N-term) - Images



Western blot analysis of SPRED1 (arrow) using rabbit polyclonal SPRED1 Antibody (N-term) (Cat.#AP1449d). 293 cell lysates (2 ug/lane) either nontransfected (Lane 1) or transiently transfected with the SPRED1 gene (Lane 2) (Origene Technologies).



Formalin-fixed and paraffin-embedded human brain tissue reacted with SPRED1 antibody (N-term), which was peroxidase-conjugated to the secondary antibody, followed by DAB staining. This data demonstrates the use of this antibody for immunohistochemistry; clinical relevance has not been evaluated.

SPRED1 Antibody (N-term) - Background

SPRED1 is a tyrosine kinase substrate that inhibits growth-factor-mediated activation of MAP kinase.

SPRED1 Antibody (N-term) - References

- Brems,H., Nat. Genet. 39 (9), 1120-1126 (2007)
- Szafranski,K., Genome Biol. 8 (8), R154 (2007)
- Yoshida,T., Oncogene 25 (45), 6056-6066 (2006)
- King,J.A., Biochem. J. 388 (PT 2), 445-454 (2005)