

**ETV6 Antibody (Center)**  
**Affinity Purified Rabbit Polyclonal Antibody (Pab)**  
**Catalog # AP14496c**

**Specification**

---

**ETV6 Antibody (Center) - Product Information**

Application	WB,E
Primary Accession	<a href="#">P41212</a>
Other Accession	<a href="#">Q0VC65</a> , <a href="#">NP_001978.1</a>
Reactivity	Mouse
Predicted	Bovine
Host	Rabbit
Clonality	Polyclonal
Isotype	Rabbit IgG
Calculated MW	53000
Antigen Region	173-202

**ETV6 Antibody (Center) - Additional Information**

**Gene ID** 2120

**Other Names**

Transcription factor ETV6, ETS translocation variant 6, ETS-related protein Tel1, Tel, ETV6, TEL, TEL1

**Target/Specificity**

This ETV6 antibody is generated from rabbits immunized with a KLH conjugated synthetic peptide between 173-202 amino acids from the Central region of human ETV6.

**Dilution**

WB~~1:1000

**Format**

Purified polyclonal antibody supplied in PBS with 0.09% (W/V) sodium azide. This antibody is purified through a protein A column, followed by peptide affinity purification.

**Storage**

Maintain refrigerated at 2-8°C for up to 2 weeks. For long term storage store at -20°C in small aliquots to prevent freeze-thaw cycles.

**Precautions**

ETV6 Antibody (Center) is for research use only and not for use in diagnostic or therapeutic procedures.

**ETV6 Antibody (Center) - Protein Information**

**Name** ETV6

### Synonyms TEL, TEL1

**Function** Transcriptional repressor; binds to the DNA sequence 5'- CCGGAAGT-3'. Plays a role in hematopoiesis and malignant transformation.

### Cellular Location

Nucleus.

### Tissue Location

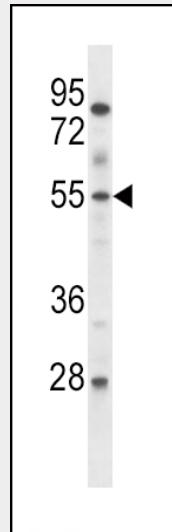
Ubiquitous.

## ETV6 Antibody (Center) - Protocols

Provided below are standard protocols that you may find useful for product applications.

- [Western Blot](#)
- [Blocking Peptides](#)
- [Dot Blot](#)
- [Immunohistochemistry](#)
- [Immunofluorescence](#)
- [Immunoprecipitation](#)
- [Flow Cytometry](#)
- [Cell Culture](#)

## ETV6 Antibody (Center) - Images



ETV6 Antibody (Center) (Cat. #AP14496c) western blot analysis in mouse lung tissue lysates (35ug/lane). This demonstrates the ETV6 antibody detected the ETV6 protein (arrow).

## ETV6 Antibody (Center) - Background

This gene encodes an ETS family transcription factor. The product of this gene contains two functional domains: a N-terminal pointed (PNT) domain that is involved in protein-protein interactions with itself and other proteins, and a C-terminal DNA-binding domain. Gene knockout studies in mice suggest that it is required for hematopoiesis and maintenance of the developing

vascular network. This gene is known to be involved in a large number of chromosomal rearrangements associated with leukemia and congenital fibrosarcoma.

#### **ETV6 Antibody (Center) - References**

- Otsubo, K., et al. *Cancer Genet. Cytogenet.* 202(1):22-26(2010)
- Roukens, M.G., et al. *Nat. Cell Biol.* 12(10):933-942(2010)
- Bailey, S.D., et al. *Diabetes Care* 33(10):2250-2253(2010)
- Gascon, E., et al. *J. Neurosci.* 30(37):12414-12423(2010)
- Liang, D.C., et al. *Pediatr Blood Cancer* 55(3):430-433(2010)