

**MYL3 Antibody (N-term)**  
**Affinity Purified Rabbit Polyclonal Antibody (Pab)**  
**Catalog # AP14492a**

**Specification**

---

**MYL3 Antibody (N-term) - Product Information**

Application	<b>WB, IHC-P,E</b>
Primary Accession	<a href="#">P08590</a>
Other Accession	<a href="#">NP_000249.1</a>
Reactivity	<b>Human</b>
Host	<b>Rabbit</b>
Clonality	<b>Polyclonal</b>
Isotype	<b>Rabbit IgG</b>
Calculated MW	<b>21932</b>
Antigen Region	<b>1-30</b>

**MYL3 Antibody (N-term) - Additional Information**

**Gene ID** 4634

**Other Names**

Myosin light chain 3, Cardiac myosin light chain 1, CMLC1, Myosin light chain 1, slow-twitch muscle B/ventricular isoform, MLC1SB, Ventricular/slow twitch myosin alkali light chain, MYL3

**Target/Specificity**

This MYL3 antibody is generated from rabbits immunized with a KLH conjugated synthetic peptide between 1-30 amino acids from the N-terminal region of human MYL3.

**Dilution**

WB~~1:1000  
IHC-P~~1:10~50

**Format**

Purified polyclonal antibody supplied in PBS with 0.09% (W/V) sodium azide. This antibody is purified through a protein A column, followed by peptide affinity purification.

**Storage**

Maintain refrigerated at 2-8°C for up to 2 weeks. For long term storage store at -20°C in small aliquots to prevent freeze-thaw cycles.

**Precautions**

MYL3 Antibody (N-term) is for research use only and not for use in diagnostic or therapeutic procedures.

**MYL3 Antibody (N-term) - Protein Information**

**Name** MYL3 ([HGNC:7584](#))

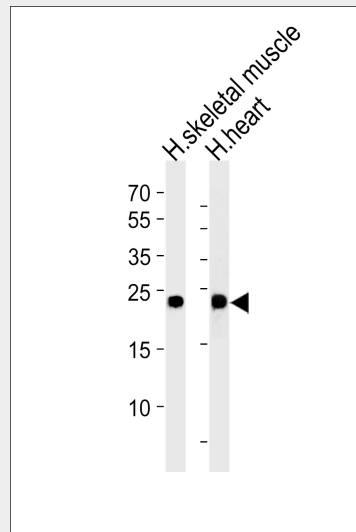
**Function** Regulatory light chain of myosin. Does not bind calcium.

### MYL3 Antibody (N-term) - Protocols

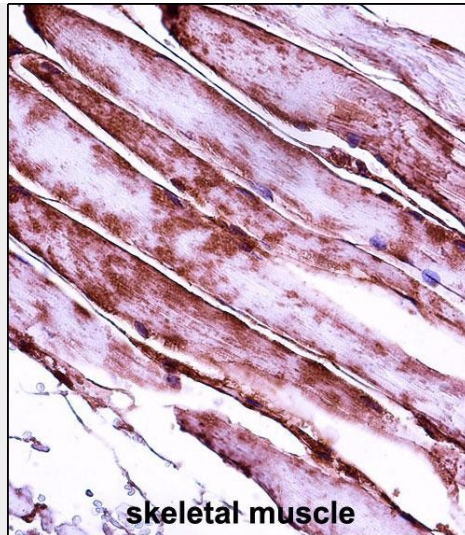
Provided below are standard protocols that you may find useful for product applications.

- [Western Blot](#)
- [Blocking Peptides](#)
- [Dot Blot](#)
- [Immunohistochemistry](#)
- [Immunofluorescence](#)
- [Immunoprecipitation](#)
- [Flow Cytometry](#)
- [Cell Culture](#)

### MYL3 Antibody (N-term) - Images



Western blot analysis of lysates from human skeletal muscle and heart tissue lysates (from left to right), using MYL3 Antibody (N-term)(Cat. #AP14492a). AP14492a was diluted at 1:1000 at each lane. A goat anti-rabbit IgG H&L(HRP) at 1:5000 dilution was used as the secondary antibody. Lysates at 35ug per lane.



MYL3 Antibody (N-term) (Cat. #AP14492a) immunohistochemistry analysis in formalin fixed and paraffin embedded human skeletal muscle followed by peroxidase conjugation of the secondary antibody and DAB staining. This data demonstrates the use of MYL3 Antibody (N-term) for immunohistochemistry. Clinical relevance has not been evaluated.

#### **MYL3 Antibody (N-term) - Background**

MYL3 encodes myosin light chain 3, an alkali light chain also referred to in the literature as both the ventricular isoform and the slow skeletal muscle isoform. Mutations in MYL3 have been identified as a cause of mid-left ventricular chamber type hypertrophic cardiomyopathy.

#### **MYL3 Antibody (N-term) - References**

- Bailey, S.D., et al. Diabetes Care 33(10):2250-2253(2010)
- Girolami, F., et al. J. Am. Coll. Cardiol. 55(14):1444-1453(2010)
- Talmud, P.J., et al. Am. J. Hum. Genet. 85(5):628-642(2009)
- McLeod, C.J., et al. Am. Heart J. 158(5):799-805(2009)
- Kaski, J.P., et al. Circ Cardiovasc Genet 2(5):436-441(2009)