

**CDCA8 Antibody (Center)**  
**Purified Rabbit Polyclonal Antibody (Pab)**  
**Catalog # AP1447c****Specification**

---

**CDCA8 Antibody (Center) - Product Information**

Application	<b>WB,E</b>
Primary Accession	<a href="#">O53HL2</a>
Reactivity	<b>Human</b>
Host	<b>Rabbit</b>
Clonality	<b>Polyclonal</b>
Isotype	<b>Rabbit IgG</b>
Antigen Region	<b>115-144</b>

**CDCA8 Antibody (Center) - Additional Information****Gene ID** 55143**Other Names**

Borealin, Cell division cycle-associated protein 8, Dasra-B, hDasra-B, Pluripotent embryonic stem cell-related gene 3 protein, CDCA8, PESCRG3

**Target/Specificity**

This CDCA8 antibody is generated from rabbits immunized with a KLH conjugated synthetic peptide between 115-144 amino acids from the Central region of human CDCA8.

**Dilution**

WB~~1:2000

**Format**

Purified polyclonal antibody supplied in PBS with 0.09% (W/V) sodium azide. This antibody is prepared by Saturated Ammonium Sulfate (SAS) precipitation followed by dialysis against PBS.

**Storage**

Maintain refrigerated at 2-8°C for up to 2 weeks. For long term storage store at -20°C in small aliquots to prevent freeze-thaw cycles.

**Precautions**

CDCA8 Antibody (Center) is for research use only and not for use in diagnostic or therapeutic procedures.

**CDCA8 Antibody (Center) - Protein Information****Name** CDCA8**Synonyms** PESCRG3**Function** Component of the chromosomal passenger complex (CPC), a complex that acts as a key

regulator of mitosis. The CPC complex has essential functions at the centromere in ensuring correct chromosome alignment and segregation and is required for chromatin-induced microtubule stabilization and spindle assembly. Major effector of the TTK kinase in the control of attachment-error-correction and chromosome alignment.

#### Cellular Location

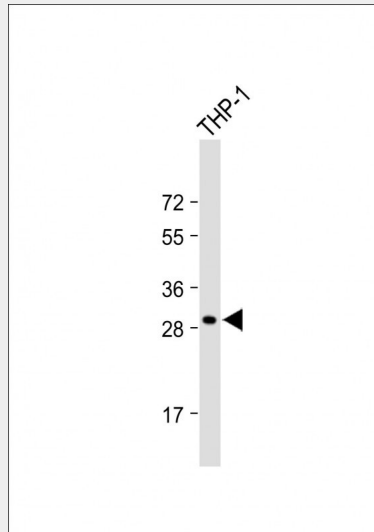
Nucleus, nucleolus. Cytoplasm. Cytoplasm, cytoskeleton, spindle. Chromosome, centromere. Note=Localizes on chromosome arms and inner centromeres from prophase through metaphase and then transferring to the spindle midzone and midbody from anaphase through cytokinesis Colocalizes with SENP3 in the nucleolus in interphase cells

### CDCA8 Antibody (Center) - Protocols

Provided below are standard protocols that you may find useful for product applications.

- [Western Blot](#)
- [Blocking Peptides](#)
- [Dot Blot](#)
- [Immunohistochemistry](#)
- [Immunofluorescence](#)
- [Immunoprecipitation](#)
- [Flow Cytometry](#)
- [Cell Culture](#)

### CDCA8 Antibody (Center) - Images



Anti-CDCA8 Antibody (Center) at 1:2000 dilution + THP-1 whole cell lysate Lysates/proteins at 20 µg per lane. Secondary Goat Anti-Rabbit IgG, (H+L), Peroxidase conjugated at 1/10000 dilution. Predicted band size : 31 kDa Blocking/Dilution buffer: 5% NFDN/TBST.

### CDCA8 Antibody (Center) - Background

CDCA8 is a component of the chromosomal passenger complex (CPC) required for stability of the bipolar mitotic spindle. The CPC complex, a key regulator of mitosis, has essential functions at the centromere in ensuring correct chromosome alignment and segregation and is required for chromatin-induced microtubule stabilization and spindle assembly. In the complex, CDCA8 may be required to direct the CPC to centromeric DNA.

**CDCA8 Antibody (Center) - References**

Sampath, S.C., et al., Cell 118(2):187-202 (2004).

Gassmann, R., et al., J. Cell Biol. 166(2):179-191 (2004).

**CDCA8 Antibody (Center) - Citations**

- [A survivin-ran complex regulates spindle formation in tumor cells.](#)