

OTUB2 Antibody (N-term)
Affinity Purified Rabbit Polyclonal Antibody (Pab)
Catalog # AP14463a

Specification

OTUB2 Antibody (N-term) - Product Information

Application	WB,E
Primary Accession	O96DC9
Other Accession	NP_075601.1
Reactivity	Human
Host	Rabbit
Clonality	Polyclonal
Isotype	Rabbit IgG
Calculated MW	27213
Antigen Region	19-48

OTUB2 Antibody (N-term) - Additional Information

Gene ID 78990

Other Names

Ubiquitin thioesterase OTUB2, Deubiquitinating enzyme OTUB2, OTU domain-containing ubiquitin aldehyde-binding protein 2, Otubain-2, Ubiquitin-specific-processing protease OTUB2, OTUB2, C14orf137, OTB2, OTU2

Target/Specificity

This OTUB2 antibody is generated from rabbits immunized with a KLH conjugated synthetic peptide between 19-48 amino acids from the N-terminal region of human OTUB2.

Dilution

WB~~1:1000

Format

Purified polyclonal antibody supplied in PBS with 0.09% (W/V) sodium azide. This antibody is purified through a protein A column, followed by peptide affinity purification.

Storage

Maintain refrigerated at 2-8°C for up to 2 weeks. For long term storage store at -20°C in small aliquots to prevent freeze-thaw cycles.

Precautions

OTUB2 Antibody (N-term) is for research use only and not for use in diagnostic or therapeutic procedures.

OTUB2 Antibody (N-term) - Protein Information

Name OTUB2

Synonyms C14orf137, OTB2, OTU2

Function Hydrolase that can remove conjugated ubiquitin from proteins in vitro and may therefore play an important regulatory role at the level of protein turnover by preventing degradation. Mediates deubiquitination of 'Lys-11'-, 'Lys-48'- and 'Lys-63'-linked polyubiquitin chains, with a preference for 'Lys-63'-linked polyubiquitin chains.

Tissue Location

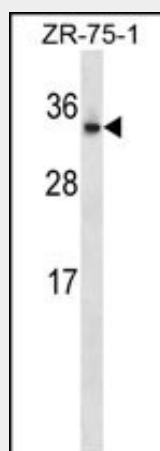
Widely expressed. Expressed at higher level in brain.

OTUB2 Antibody (N-term) - Protocols

Provided below are standard protocols that you may find useful for product applications.

- [Western Blot](#)
- [Blocking Peptides](#)
- [Dot Blot](#)
- [Immunohistochemistry](#)
- [Immunofluorescence](#)
- [Immunoprecipitation](#)
- [Flow Cytometry](#)
- [Cell Culture](#)

OTUB2 Antibody (N-term) - Images



OTUB2 Antibody (N-term) (Cat. #AP14463a) western blot analysis in ZR-75-1 cell line lysates (35ug/lane). This demonstrates the OTUB2 antibody detected the OTUB2 protein (arrow).

OTUB2 Antibody (N-term) - Background

Otubains are deubiquitylating cysteine proteases (DUBs; see MIM 602519) that belong to the ovarian tumor (OTU) protein superfamily. Like other DUBs, otubains cleave proteins precisely at the ubiquitin (UB; see MIM 191339)-protein bond.

OTUB2 Antibody (N-term) - References

- Li, S., et al. J. Biol. Chem. 285(7):4291-4297(2010)
Sowa, M.E., et al. Cell 138(2):389-403(2009)
Edelmann, M.J., et al. Biochem. J. 418(2):379-390(2009)

Lamesch, P., et al. Genomics 89(3):307-315(2007)
Nanao, M.H., et al. EMBO Rep. 5(8):783-788(2004)