

Mouse Phkg2 Antibody (N-term)
Affinity Purified Rabbit Polyclonal Antibody (Pab)
Catalog # AP14454a

Specification

Mouse Phkg2 Antibody (N-term) - Product Information

Application	WB, IHC-P,E
Primary Accession	O9DB30
Other Accession	P31325 , NP_081164.2
Reactivity	Human, Mouse
Predicted	Rat
Host	Rabbit
Clonality	Polyclonal
Isotype	Rabbit IgG
Calculated MW	46572
Antigen Region	2-29

Mouse Phkg2 Antibody (N-term) - Additional Information

Gene ID 68961

Other Names

Phosphorylase b kinase gamma catalytic chain, liver/testis isoform, PHK-gamma-LT, PHK-gamma-T, Phosphorylase kinase subunit gamma-2, Phkg2

Target/Specificity

This Mouse Phkg2 antibody is generated from rabbits immunized with a KLH conjugated synthetic peptide between 2-29 amino acids from the N-terminal region of mouse Phkg2.

Dilution

WB~~1:1000
IHC-P~~1:10~50

Format

Purified polyclonal antibody supplied in PBS with 0.09% (W/V) sodium azide. This antibody is purified through a protein A column, followed by peptide affinity purification.

Storage

Maintain refrigerated at 2-8°C for up to 2 weeks. For long term storage store at -20°C in small aliquots to prevent freeze-thaw cycles.

Precautions

Mouse Phkg2 Antibody (N-term) is for research use only and not for use in diagnostic or therapeutic procedures.

Mouse Phkg2 Antibody (N-term) - Protein Information

Name Phkg2

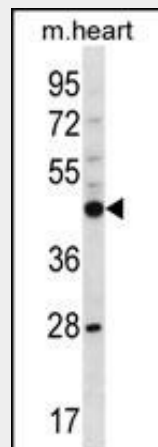
Function Catalytic subunit of the phosphorylase b kinase (PHK), which mediates the neural and hormonal regulation of glycogen breakdown (glycogenolysis) by phosphorylating and thereby activating glycogen phosphorylase. May regulate glycogeneolysis in the testis. In vitro, phosphorylates PYGM (By similarity).

Mouse Phkg2 Antibody (N-term) - Protocols

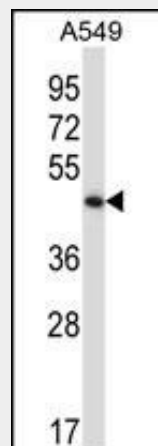
Provided below are standard protocols that you may find useful for product applications.

- [Western Blot](#)
- [Blocking Peptides](#)
- [Dot Blot](#)
- [Immunohistochemistry](#)
- [Immunofluorescence](#)
- [Immunoprecipitation](#)
- [Flow Cytometry](#)
- [Cell Culture](#)

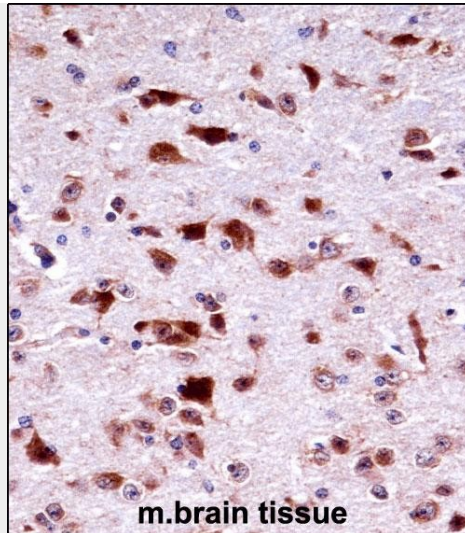
Mouse Phkg2 Antibody (N-term) - Images



Mouse Phkg2 Antibody (N-term) (Cat. #AP14454a) western blot analysis in mouse heart tissue lysates (35ug/lane). This demonstrates the Phkg2 antibody detected the Phkg2 protein (arrow).



Mouse Phkg2 Antibody (N-term) (Cat. #AP14454a) western blot analysis in A549 cell line lysates (35ug/lane). This demonstrates the Phkg2 antibody detected the Phkg2 protein (arrow).



Mouse Phkg2 Antibody (N-term) (AP14454a) immunohistochemistry analysis in formalin fixed and paraffin embedded mouse brain tissue followed by peroxidase conjugation of the secondary antibody and DAB staining. This data demonstrates the use of Mouse Phkg2 Antibody (N-term) for immunohistochemistry. Clinical relevance has not been evaluated.

Mouse Phkg2 Antibody (N-term) - Background

Phosphorylase b kinase catalyzes the phosphorylation of serine in certain substrates, including troponin I. This isozyme may regulate glycogeneolysis in the testis.

Mouse Phkg2 Antibody (N-term) - References

- Katayama, S., et al. Science 309(5740):1564-1566(2005)
- Carninci, P., et al. Science 309(5740):1559-1563(2005)
- Strausberg, R.L., et al. Proc. Natl. Acad. Sci. U.S.A. 99(26):16899-16903(2002)
- Okazaki, Y., et al. Nature 420(6915):563-573(2002)
- Kawai, J., et al. Nature 409(6821):685-690(2001)