

SSR1 Antibody (N-term)
Purified Rabbit Polyclonal Antibody (Pab)
Catalog # AP1444a

Specification

SSR1 Antibody (N-term) - Product Information

Application	WB, IHC-P,E
Primary Accession	P43307
Other Accession	A6QLP7
Reactivity	Human, Mouse
Predicted	Bovine
Host	Rabbit
Clonality	Polyclonal
Isotype	Rabbit IgG
Calculated MW	32235
Antigen Region	17-46

SSR1 Antibody (N-term) - Additional Information

Gene ID 6745

Other Names

Translocon-associated protein subunit alpha, TRAP-alpha, Signal sequence receptor subunit alpha, SSR-alpha, SSR1, TRAPA

Target/Specificity

This SSR1 antibody is generated from rabbits immunized with a KLH conjugated synthetic peptide between 17-46 amino acids from the N-terminal region of human SSR1.

Dilution

WB~~1:1000
IHC-P~~1:10~50

Format

Purified polyclonal antibody supplied in PBS with 0.09% (W/V) sodium azide. This antibody is prepared by Saturated Ammonium Sulfate (SAS) precipitation followed by dialysis against PBS.

Storage

Maintain refrigerated at 2-8°C for up to 2 weeks. For long term storage store at -20°C in small aliquots to prevent freeze-thaw cycles.

Precautions

SSR1 Antibody (N-term) is for research use only and not for use in diagnostic or therapeutic procedures.

SSR1 Antibody (N-term) - Protein Information

Name SSR1

Synonyms TRAPA

Function TRAP proteins are part of a complex whose function is to bind calcium to the ER membrane and thereby regulate the retention of ER resident proteins. May be involved in the recycling of the translocation apparatus after completion of the translocation process or may function as a membrane-bound chaperone facilitating folding of translocated proteins.

Cellular Location

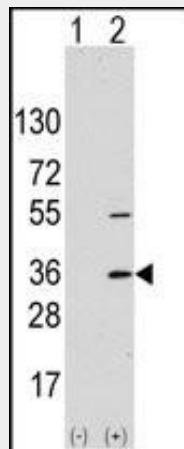
Endoplasmic reticulum membrane; Single-pass type I membrane protein

SSR1 Antibody (N-term) - Protocols

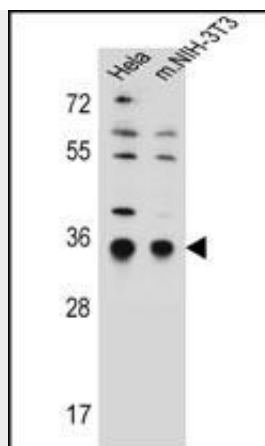
Provided below are standard protocols that you may find useful for product applications.

- [Western Blot](#)
- [Blocking Peptides](#)
- [Dot Blot](#)
- [Immunohistochemistry](#)
- [Immunofluorescence](#)
- [Immunoprecipitation](#)
- [Flow Cytometry](#)
- [Cell Culture](#)

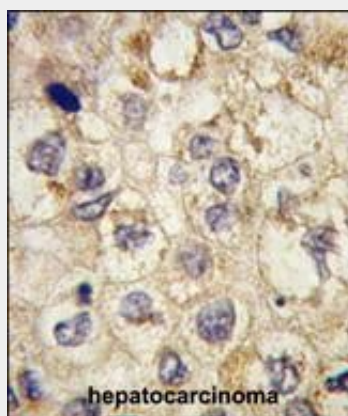
SSR1 Antibody (N-term) - Images



Western blot analysis of SSR1 (arrow) using rabbit SSR1 Antibody (N-term). 293 cell lysates (2 ug/lane) either nontransfected (Lane 1) or transiently transfected with the SSR1 gene (Lane 2) (Origene Technologies).



SSR1 Antibody (N-term) (Cat. #AP1444a) western blot analysis in HeLa, mouse NIH-3T3 cell line lysates (35ug/lane). This demonstrates the SSR1 antibody detected the SSR1 protein (arrow).



Formalin-fixed and paraffin-embedded human hepatocarcinoma tissue reacted with SSR1 antibody (N-term) (Cat.#AP1444a), which was peroxidase-conjugated to the secondary antibody, followed by DAB staining. This data demonstrates the use of this antibody for immunohistochemistry; clinical relevance has not been evaluated.

SSR1 Antibody (N-term) - Background

The signal sequence receptor (SSR) is a glycosylated endoplasmic reticulum (ER) membrane receptor associated with protein translocation across the ER membrane. The SSR consists of 2 subunits, a 34-kD glycoprotein encoded by this gene and a 22-kD glycoprotein. This gene generates several mRNA species as a result of complex alternative polyadenylation. This gene is unusual in that it utilizes arrays of polyA signal sequences that are exclusively non-canonical.

SSR1 Antibody (N-term) - References

Hirama, T., et al., FEBS Lett. 455(3):223-227 (1999).
 Hartmann, E., et al., FEBS Lett. 349(3):324-326 (1994).