

Mouse Map2k3 Antibody (Center)
Affinity Purified Rabbit Polyclonal Antibody (Pab)
Catalog # AP14441c

Specification

Mouse Map2k3 Antibody (Center) - Product Information

Application	WB,E
Primary Accession	O09110
Other Accession	NP_032954.1
Reactivity	Human, Mouse
Host	Rabbit
Clonality	Polyclonal
Isotype	Rabbit IgG
Calculated MW	39296
Antigen Region	132-160

Mouse Map2k3 Antibody (Center) - Additional Information

Gene ID 26397

Other Names

Dual specificity mitogen-activated protein kinase kinase 3, MAP kinase kinase 3, MAPKK 3, MAPK/ERK kinase 3, MEK 3, Map2k3, Mkk3, Prkmk3

Target/Specificity

This Mouse Map2k3 antibody is generated from rabbits immunized with a KLH conjugated synthetic peptide between 132-160 amino acids from the Central region of mouse Map2k3.

Dilution

WB~~1:1000

Format

Purified polyclonal antibody supplied in PBS with 0.09% (W/V) sodium azide. This antibody is purified through a protein A column, followed by peptide affinity purification.

Storage

Maintain refrigerated at 2-8°C for up to 2 weeks. For long term storage store at -20°C in small aliquots to prevent freeze-thaw cycles.

Precautions

Mouse Map2k3 Antibody (Center) is for research use only and not for use in diagnostic or therapeutic procedures.

Mouse Map2k3 Antibody (Center) - Protein Information

Name Map2k3

Synonyms Mkk3, Prkmk3

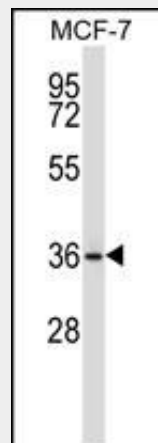
Function Dual specificity kinase. Is activated by cytokines and environmental stress in vivo. Catalyzes the concomitant phosphorylation of a threonine and a tyrosine residue in the MAP kinase p38. Part of a signaling cascade that begins with the activation of the adrenergic receptor ADRA1B and leads to the activation of MAPK14.

Mouse Map2k3 Antibody (Center) - Protocols

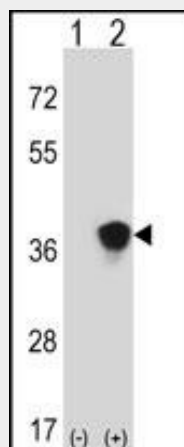
Provided below are standard protocols that you may find useful for product applications.

- [Western Blot](#)
- [Blocking Peptides](#)
- [Dot Blot](#)
- [Immunohistochemistry](#)
- [Immunofluorescence](#)
- [Immunoprecipitation](#)
- [Flow Cytometry](#)
- [Cell Culture](#)

Mouse Map2k3 Antibody (Center) - Images

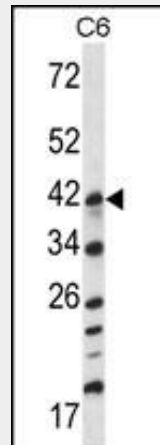


Mouse Map2k3 Antibody (Center) (Cat. #AP14441c) western blot analysis in MCF-7 cell line lysates (35ug/lane). This demonstrates the Map2k3 antibody detected the Map2k3 protein (arrow).

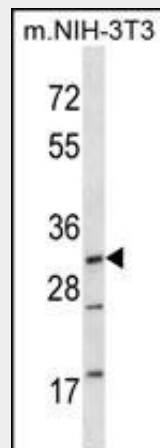


Western blot analysis of Map2k3 (arrow) using rabbit polyclonal Mouse Map2k3 Antibody (Center) (Cat. #AP14441c). 293 cell lysates (2 ug/lane) either nontransfected (Lane 1) or transiently

transfected (Lane 2) with the Map2k3 gene.



Mouse Map2k3 Antibody (Center) (Cat. #AP14441c) western blot analysis in C6 cell line lysates (35ug/lane). This demonstrates the Map2k3 antibody detected the Map2k3 protein (arrow).



Mouse Map2k3 Antibody (Center) (Cat. #AP14441c) western blot analysis in mouse NIH-3T3 cell line lysates (35ug/lane). This demonstrates the Map2k3 antibody detected the Map2k3 protein (arrow).

Mouse Map2k3 Antibody (Center) - Background

Dual specificity kinase. Is activated by cytokines and environmental stress in vivo. Catalyzes the concomitant phosphorylation of a threonine and a tyrosine residue in the MAP kinase p38 (By similarity).

Mouse Map2k3 Antibody (Center) - References

- Yang, Z., et al. J. Immunol. 185(10):6205-6213(2010)
- Remy, G., et al. Cell. Signal. 22(4):660-667(2010)
- Behren, A., et al. Oncogene 29(10):1519-1530(2010)
- Nagelin, M.H., et al. J. Biol. Chem. 284(45):31303-31314(2009)
- Yoshizawa, T., et al. J. Immunol. 183(2):1360-1367(2009)