

GTF2E1 Antibody (N-term)
Affinity Purified Rabbit Polyclonal Antibody (Pab)
Catalog # AP14432a

Specification

GTF2E1 Antibody (N-term) - Product Information

Application	WB, IHC-P,E
Primary Accession	P29083
Other Accession	A6QLI8 , NP_005504.2
Reactivity	Human
Predicted	Bovine
Host	Rabbit
Clonality	Polyclonal
Isotype	Rabbit IgG
Calculated MW	49452
Antigen Region	93-121

GTF2E1 Antibody (N-term) - Additional Information

Gene ID 2960

Other Names

General transcription factor IIE subunit 1, General transcription factor IIE 56 kDa subunit, Transcription initiation factor IIE subunit alpha, TFIIE-alpha, GTF2E1, TF2E1

Target/Specificity

This GTF2E1 antibody is generated from rabbits immunized with a KLH conjugated synthetic peptide between 93-121 amino acids from the N-terminal region of human GTF2E1.

Dilution

WB~~1:1000
IHC-P~~1:10~50

Format

Purified polyclonal antibody supplied in PBS with 0.09% (W/V) sodium azide. This antibody is purified through a protein A column, followed by peptide affinity purification.

Storage

Maintain refrigerated at 2-8°C for up to 2 weeks. For long term storage store at -20°C in small aliquots to prevent freeze-thaw cycles.

Precautions

GTF2E1 Antibody (N-term) is for research use only and not for use in diagnostic or therapeutic procedures.

GTF2E1 Antibody (N-term) - Protein Information

Name GTF2E1

Synonyms TF2E1

Function Recruits TFIIH to the initiation complex and stimulates the RNA polymerase II C-terminal domain kinase and DNA-dependent ATPase activities of TFIIH. Both TFIIH and TFIIIE are required for promoter clearance by RNA polymerase.

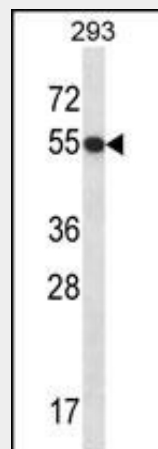
Cellular Location

Nucleus

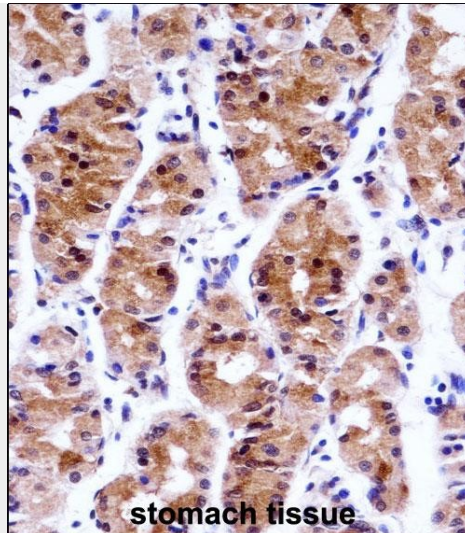
GTF2E1 Antibody (N-term) - Protocols

Provided below are standard protocols that you may find useful for product applications.

- [Western Blot](#)
- [Blocking Peptides](#)
- [Dot Blot](#)
- [Immunohistochemistry](#)
- [Immunofluorescence](#)
- [Immunoprecipitation](#)
- [Flow Cytometry](#)
- [Cell Culture](#)

GTF2E1 Antibody (N-term) - Images

GTF2E1 Antibody (N-term) (Cat. #AP14432a) western blot analysis in 293 cell line lysates (35ug/lane). This demonstrates the GTF2E1 antibody detected the GTF2E1 protein (arrow).



GTF2E1 Antibody (N-term) (AP14432a) immunohistochemistry analysis in formalin fixed and paraffin embedded human stomach tissue followed by peroxidase conjugation of the secondary antibody and DAB staining. This data demonstrates the use of GTF2E1 Antibody (N-term) for immunohistochemistry. Clinical relevance has not been evaluated.

GTF2E1 Antibody (N-term) - Background

Recruits TFIID to the initiation complex and stimulates the RNA polymerase II C-terminal domain kinase and DNA-dependent ATPase activities of TFIID. Both TFIID and TFIIE are required for promoter clearance by RNA polymerase.

GTF2E1 Antibody (N-term) - References

- Vega, A., et al. Gynecol. Oncol. 112(1):210-214(2009)
- Okuda, M., et al. EMBO J. 27(7):1161-1171(2008)
- Di Lello, P., et al. Proc. Natl. Acad. Sci. U.S.A. 105(1):106-111(2008)
- Jawhari, A., et al. EMBO Rep. 7(5):500-505(2006)
- Okuda, M., et al. J. Biol. Chem. 279(49):51395-51403(2004)