

**CTDSP2 Antibody (N-term)**  
**Affinity Purified Rabbit Polyclonal Antibody (Pab)**  
**Catalog # AP14394a**

**Specification**

---

**CTDSP2 Antibody (N-term) - Product Information**

Application	WB,E
Primary Accession	<a href="#">O14595</a>
Other Accession	<a href="#">NP_005721.3</a>
Reactivity	Human
Host	Rabbit
Clonality	Polyclonal
Isotype	Rabbit IgG
Calculated MW	30664
Antigen Region	11-39

**CTDSP2 Antibody (N-term) - Additional Information**

**Gene ID** 10106

**Other Names**

Carboxy-terminal domain RNA polymerase II polypeptide A small phosphatase 2, Nuclear LIM interactor-interacting factor 2, NLI-interacting factor 2, Protein OS-4, Small C-terminal domain phosphatase 2, Small CTD phosphatase 2, SCP2, CTDSP2, NIF2, OS4, SCP2

**Target/Specificity**

This CTDSP2 antibody is generated from rabbits immunized with a KLH conjugated synthetic peptide between 11-39 amino acids from the N-terminal region of human CTDSP2.

**Dilution**

WB~~1:1000

**Format**

Purified polyclonal antibody supplied in PBS with 0.09% (W/V) sodium azide. This antibody is purified through a protein A column, followed by peptide affinity purification.

**Storage**

Maintain refrigerated at 2-8°C for up to 2 weeks. For long term storage store at -20°C in small aliquots to prevent freeze-thaw cycles.

**Precautions**

CTDSP2 Antibody (N-term) is for research use only and not for use in diagnostic or therapeutic procedures.

**CTDSP2 Antibody (N-term) - Protein Information**

**Name** CTDSP2

**Synonyms** NIF2, OS4, SCP2

**Function** Preferentially catalyzes the dephosphorylation of 'Ser-5' within the tandem 7 residue repeats in the C-terminal domain (CTD) of the largest RNA polymerase II subunit POLR2A. Negatively regulates RNA polymerase II transcription, possibly by controlling the transition from initiation/capping to processive transcript elongation. Recruited by REST to neuronal genes that contain RE-1 elements, leading to neuronal gene silencing in non-neuronal cells. May contribute to the development of sarcomas.

**Cellular Location**

Nucleus.

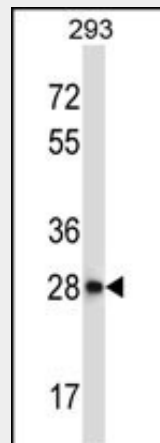
**Tissue Location**

Expression is restricted to non-neuronal tissues. Highest expression in pancreas and lowest in liver

**CTDSP2 Antibody (N-term) - Protocols**

Provided below are standard protocols that you may find useful for product applications.

- [Western Blot](#)
- [Blocking Peptides](#)
- [Dot Blot](#)
- [Immunohistochemistry](#)
- [Immunofluorescence](#)
- [Immunoprecipitation](#)
- [Flow Cytometry](#)
- [Cell Culture](#)

**CTDSP2 Antibody (N-term) - Images**

CTDSP2 Antibody (N-term) (Cat. #AP14394a) western blot analysis in 293 cell line lysates (35ug/lane). This demonstrates the CTDSP2 antibody detected the CTDSP2 protein (arrow).

**CTDSP2 Antibody (N-term) - Background**

Preferentially catalyzes the dephosphorylation of 'Ser-5' within the tandem 7 residues repeats in the C-terminal domain (CTD) of the largest RNA polymerase II subunit POLR2A. Negatively regulates RNA polymerase II transcription, possibly by controlling the transition from initiation/capping to processive transcript elongation. Recruited by REST to neuronal genes that contain RE-1 elements, leading to neuronal gene silencing in non-neuronal cells. May contribute to the development of

sarcomas.

### **CTDSP2 Antibody (N-term) - References**

- Lamesch, P., et al. Genomics 89(3):307-315(2007)  
Sapkota, G., et al. J. Biol. Chem. 281(52):40412-40419(2006)  
Thompson, J., et al. EMBO J. 25(12):2757-2767(2006)  
Yeo, M., et al. J. Biol. Chem. 278(28):26078-26085(2003)  
Su, Y.A., et al. Oncogene 15(11):1289-1294(1997)