

SF1 Antibody (Center)
Affinity Purified Rabbit Polyclonal Antibody (Pab)
Catalog # AP14357C**Specification**

SF1 Antibody (Center) - Product Information

| | |
|-------------------|---|
| Application | WB,E |
| Primary Accession | Q15637 |
| Other Accession | Q64213 , NP_001171502.1 , NP_001171501.1 , NP_973724.1 |
| Reactivity | Human |
| Predicted | Mouse |
| Host | Rabbit |
| Clonality | Polyclonal |
| Isotype | Rabbit IgG |
| Calculated MW | 68330 |
| Antigen Region | 212-241 |

SF1 Antibody (Center) - Additional Information**Gene ID** 7536**Other Names**

Splicing factor 1, Mammalian branch point-binding protein, BBP, mBBP, Transcription factor ZFM1, Zinc finger gene in MEN1 locus, Zinc finger protein 162, SF1, ZFM1, ZNF162

Target/Specificity

This SF1 antibody is generated from rabbits immunized with a KLH conjugated synthetic peptide between 212-241 amino acids from the Central region of human SF1.

Dilution

WB~~1:1000

Format

Purified polyclonal antibody supplied in PBS with 0.09% (W/V) sodium azide. This antibody is purified through a protein A column, followed by peptide affinity purification.

Storage

Maintain refrigerated at 2-8°C for up to 2 weeks. For long term storage store at -20°C in small aliquots to prevent freeze-thaw cycles.

Precautions

SF1 Antibody (Center) is for research use only and not for use in diagnostic or therapeutic procedures.

SF1 Antibody (Center) - Protein Information**Name** SF1

Synonyms ZFM1, ZNF162

Function Necessary for the ATP-dependent first step of spliceosome assembly. Binds to the intron branch point sequence (BPS) 5'-UACU AAC-3' of the pre-mRNA. May act as transcription repressor.

Cellular Location

Nucleus.

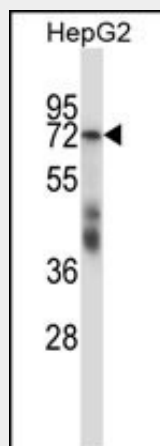
Tissue Location

Detected in lung, ovary, adrenal gland, colon, kidney, muscle, pancreas, thyroid, placenta, brain, liver and heart

SF1 Antibody (Center) - Protocols

Provided below are standard protocols that you may find useful for product applications.

- [Western Blot](#)
- [Blocking Peptides](#)
- [Dot Blot](#)
- [Immunohistochemistry](#)
- [Immunofluorescence](#)
- [Immunoprecipitation](#)
- [Flow Cytometry](#)
- [Cell Culture](#)

SF1 Antibody (Center) - Images

SF1 Antibody (Center) (Cat. #AP14357c) western blot analysis in HepG2 cell line lysates (35ug/lane). This demonstrates the SF1 antibody detected the SF1 protein (arrow).

SF1 Antibody (Center) - Background

This gene encodes a nuclear pre-mRNA splicing factor. The encoded protein specifically recognizes the intron branch point sequence and is required for the early stages of spliceosome assembly. Alternate splicing results in multiple transcript variants.

SF1 Antibody (Center) - References

Jeyabalan, J., et al. PLoS ONE 5 (5), E10646 (2010) :
Corsini, L., et al. J. Biol. Chem. 284(1):630-639(2009)
Rino, J., et al. Mol. Cell. Biol. 28(9):3045-3057(2008)
Olejniak-Schmidt, A.K., et al. Arch. Virol. 153(5):983-990(2008)
Sugiyama, N., et al. Mol. Cell Proteomics 6(6):1103-1109(2007)

SF1 Antibody (Center) - Citations

- [The Epstein-Barr virus EBNA1 protein modulates the alternative splicing of cellular genes.](#)