

TOLLIP Antibody (C-term)
Affinity Purified Rabbit Polyclonal Antibody (Pab)
Catalog # AP14351b

Specification

TOLLIP Antibody (C-term) - Product Information

Application	WB,E
Primary Accession	O9H0E2
Other Accession	A2RUW1 , O9QZ06 , NP_061882.2
Reactivity	Human
Predicted	Mouse, Rat
Host	Rabbit
Clonality	Polyclonal
Isotype	Rabbit IgG
Calculated MW	30282
Antigen Region	236-265

TOLLIP Antibody (C-term) - Additional Information

Gene ID 54472

Other Names

Toll-interacting protein, TOLLIP

Target/Specificity

This TOLLIP antibody is generated from rabbits immunized with a KLH conjugated synthetic peptide between 236-265 amino acids from the C-terminal region of human TOLLIP.

Dilution

WB~~1:1000

Format

Purified polyclonal antibody supplied in PBS with 0.09% (W/V) sodium azide. This antibody is purified through a protein A column, followed by peptide affinity purification.

Storage

Maintain refrigerated at 2-8°C for up to 2 weeks. For long term storage store at -20°C in small aliquots to prevent freeze-thaw cycles.

Precautions

TOLLIP Antibody (C-term) is for research use only and not for use in diagnostic or therapeutic procedures.

TOLLIP Antibody (C-term) - Protein Information

Name TOLLIP

Function Component of the signaling pathway of IL-1 and Toll-like receptors (PubMed:[10854325](#),

PubMed:[11751856](#)). Inhibits cell activation by microbial products. Recruits IRAK1 to the IL-1 receptor complex (PubMed:[10854325](#)). Inhibits IRAK1 phosphorylation and kinase activity (PubMed:[11751856](#)). Connects the ubiquitin pathway to autophagy by functioning as a ubiquitin-ATG8 family adapter and thus mediating autophagic clearance of ubiquitin conjugates (PubMed:[25042851](#)). The TOLLIP-dependent selective autophagy pathway plays an important role in clearance of cytotoxic polyQ proteins aggregates (PubMed:[25042851](#)). In a complex with TOM1, recruits ubiquitin-conjugated proteins onto early endosomes (PubMed:[15047686](#)). Binds to phosphatidylinositol 3-phosphate (PtdIns(3)P) (PubMed:[26320582](#)).

Cellular Location

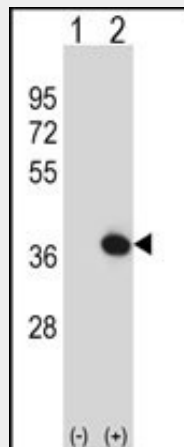
Cytoplasm. Endosome. Early endosome Note=Localized to endo/exosomal vesicles

TOLLIP Antibody (C-term) - Protocols

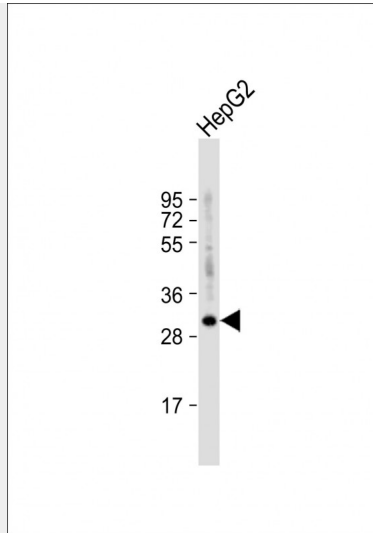
Provided below are standard protocols that you may find useful for product applications.

- [Western Blot](#)
- [Blocking Peptides](#)
- [Dot Blot](#)
- [Immunohistochemistry](#)
- [Immunofluorescence](#)
- [Immunoprecipitation](#)
- [Flow Cytometry](#)
- [Cell Culture](#)

TOLLIP Antibody (C-term) - Images



Western blot analysis of TOLLIP (arrow) using rabbit polyclonal TOLLIP Antibody (C-term) (Cat. #AP14351b). 293 cell lysates (2 ug/lane) either nontransfected (Lane 1) or transiently transfected (Lane 2) with the TOLLIP gene.



Anti-TOLLIP Antibody (C-term) at 1:1000 dilution + HepG2 whole cell lysate Lysates/proteins at 20 μ g per lane. Secondary Goat Anti-Rabbit IgG, (H+L), Peroxidase conjugated at 1/10000 dilution. Predicted band size : 30 kDa Blocking/Dilution buffer: 5% NFDN/TBST.

TOLLIP Antibody (C-term) - Background

This gene encodes a ubiquitin-binding protein that interacts with several Toll-like receptor (TLR) signaling cascade components. The encoded protein regulates inflammatory signaling and is involved in interleukin-1 receptor trafficking and in the turnover of IL1R-associated kinase.

TOLLIP Antibody (C-term) - References

- Han, S., et al. Hum. Immunol. 71(7):727-730(2010)
- Rajaraman, P., et al. Cancer Epidemiol. Biomarkers Prev. 19(5):1356-1361(2010)
- Davila, S., et al. Genes Immun. 11(3):232-238(2010)
- Yoshida, T., et al. Int. J. Mol. Med. 25(4):649-656(2010)
- Oguri, M., et al. Am. J. Hypertens. 23(1):70-77(2010)