

**CSTA Antibody (C-term)**  
**Affinity Purified Rabbit Polyclonal Antibody (Pab)**  
**Catalog # AP14350b****Specification**

---

**CSTA Antibody (C-term) - Product Information**

Application	<b>WB, IHC-P,E</b>
Primary Accession	<a href="#">P01040</a>
Other Accession	<a href="#">NP_005204.1</a>
Reactivity	<b>Human</b>
Host	<b>Rabbit</b>
Clonality	<b>Polyclonal</b>
Isotype	<b>Rabbit IgG</b>
Calculated MW	<b>11006</b>
Antigen Region	<b>69-98</b>

**CSTA Antibody (C-term) - Additional Information****Gene ID** 1475**Other Names**

Cystatin-A, Cystatin-AS, Stefin-A, Cystatin-A, N-terminally processed, CSTA, STF1, STFA

**Target/Specificity**

This CSTA antibody is generated from rabbits immunized with a KLH conjugated synthetic peptide between 69-98 amino acids from the C-terminal region of human CSTA.

**Dilution**

WB~~1:1000

IHC-P~~1:10~50

**Format**

Purified polyclonal antibody supplied in PBS with 0.09% (W/V) sodium azide. This antibody is purified through a protein A column, followed by peptide affinity purification.

**Storage**

Maintain refrigerated at 2-8°C for up to 2 weeks. For long term storage store at -20°C in small aliquots to prevent freeze-thaw cycles.

**Precautions**

CSTA Antibody (C-term) is for research use only and not for use in diagnostic or therapeutic procedures.

**CSTA Antibody (C-term) - Protein Information****Name** CSTA**Synonyms** STF1, STFA

**Function** This is an intracellular thiol proteinase inhibitor. Has an important role in desmosome-mediated cell-cell adhesion in the lower levels of the epidermis.

**Cellular Location**

Cytoplasm.

**Tissue Location**

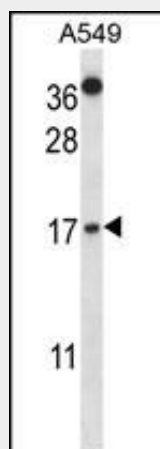
Expressed in the skin throughout the epidermis.

**CSTA Antibody (C-term) - Protocols**

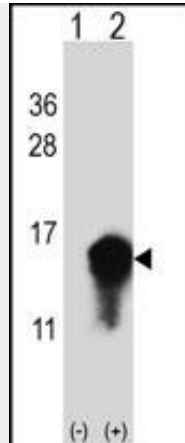
Provided below are standard protocols that you may find useful for product applications.

- [Western Blot](#)
- [Blocking Peptides](#)
- [Dot Blot](#)
- [Immunohistochemistry](#)
- [Immunofluorescence](#)
- [Immunoprecipitation](#)
- [Flow Cytometry](#)
- [Cell Culture](#)

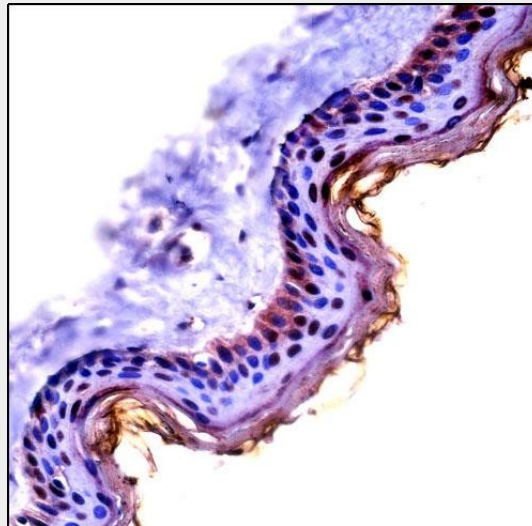
**CSTA Antibody (C-term) - Images**



CSTA Antibody (C-term) (Cat. #AP14350b) western blot analysis in A549 cell line lysates (35ug/lane). This demonstrates the CSTA antibody detected the CSTA protein (arrow).



Western blot analysis of CSTA (arrow) using rabbit polyclonal CSTA Antibody (C-term) (Cat. #AP14350b). 293 cell lysates (2 ug/lane) either nontransfected (Lane 1) or transiently transfected (Lane 2) with the CSTA gene.



CSTA Antibody (C-term) (AP14350b) immunohistochemistry analysis in formalin fixed and paraffin embedded human skin tissue followed by peroxidase conjugation of the secondary antibody and DAB staining. This data demonstrates the use of CSTA Antibody (C-term) for immunohistochemistry. Clinical relevance has not been evaluated.

### **CSTA Antibody (C-term) - Background**

The cystatin superfamily encompasses proteins that contain multiple cystatin-like sequences. Some of the members are active cysteine protease inhibitors, while others have lost or perhaps never acquired this inhibitory activity. There are three inhibitory families in the superfamily, including the type 1 cystatins (stefins), type 2 cystatins, and kininogens. This gene encodes a stefin that functions as a cysteine protease inhibitor, forming tight complexes with papain and the cathepsins B, H, and L. The protein is one of the precursor proteins of cornified cell envelope in keratinocytes and plays a role in epidermal development and maintenance. Stefins have been proposed as prognostic and diagnostic tools for cancer.

### **CSTA Antibody (C-term) - References**

O'Seaghdha, C.M., et al. Hum. Mol. Genet. 19(21):4296-4303(2010)  
Kestenbaum, B., et al. J. Am. Soc. Nephrol. 21(7):1223-1232(2010)  
Takai, T., et al. J. Immunol. 183(12):7958-7965(2009)  
Vasilopoulos, Y., et al. Eur. J. Hum. Genet. 16(8):1002-1009(2008)  
Parker, B.S., et al. J. Pathol. 214(3):337-346(2008)