

BGLAP Antibody (Center)
Affinity Purified Rabbit Polyclonal Antibody (Pab)
Catalog # AP14337c

Specification

BGLAP Antibody (Center) - Product Information

Application	WB,E
Primary Accession	P02818
Other Accession	NP_954642.1
Reactivity	Human
Host	Rabbit
Clonality	Polyclonal
Isotype	Rabbit IgG
Calculated MW	10963
Antigen Region	23-52

BGLAP Antibody (Center) - Additional Information

Gene ID 632

Other Names

Osteocalcin, Bone Gla protein, BGP, Gamma-carboxyglutamic acid-containing protein, BGLAP

Target/Specificity

This BGLAP antibody is generated from rabbits immunized with a KLH conjugated synthetic peptide between 23-52 amino acids from the Central region of human BGLAP.

Dilution

WB~~1:1000

Format

Purified polyclonal antibody supplied in PBS with 0.09% (W/V) sodium azide. This antibody is purified through a protein A column, followed by peptide affinity purification.

Storage

Maintain refrigerated at 2-8°C for up to 2 weeks. For long term storage store at -20°C in small aliquots to prevent freeze-thaw cycles.

Precautions

BGLAP Antibody (Center) is for research use only and not for use in diagnostic or therapeutic procedures.

BGLAP Antibody (Center) - Protein Information

Name BGLAP

Function Bone protein that constitutes 1-2% of the total bone protein, and which acts as a negative regulator of bone formation (PubMed:[3019668](#), PubMed:[6967872](#)). Functions to limit

bone formation without impairing bone resorption or mineralization (By similarity). It binds strongly to apatite and calcium (PubMed:[6967872](#)).

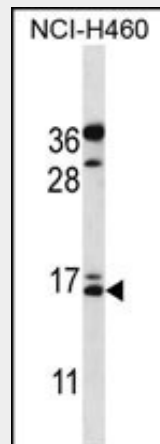
Cellular Location
Secreted.

BGLAP Antibody (Center) - Protocols

Provided below are standard protocols that you may find useful for product applications.

- [Western Blot](#)
- [Blocking Peptides](#)
- [Dot Blot](#)
- [Immunohistochemistry](#)
- [Immunofluorescence](#)
- [Immunoprecipitation](#)
- [Flow Cytometry](#)
- [Cell Culture](#)

BGLAP Antibody (Center) - Images



BGLAP Antibody (Center) (Cat. #AP14337c) western blot analysis in NCI-H460 cell line lysates (35ug/lane). This demonstrates the BGLAP antibody detected the BGLAP protein (arrow).

BGLAP Antibody (Center) - Background

Constitutes 1-2% of the total bone protein. It binds strongly to apatite and calcium.

BGLAP Antibody (Center) - References

- Yeap, B.B., et al. Eur. J. Endocrinol. 163(2):265-272(2010)
Lee, Y.J., et al. Diabetes Care 33 (7), E90 (2010) :
Foresta, C., et al. J. Clin. Endocrinol. Metab. 95(7):3502-3506(2010)
Saleem, U., et al. Arterioscler. Thromb. Vasc. Biol. 30(7):1474-1478(2010)
Das, S.K., et al. Dis. Markers 28(5):281-286(2010)