

**HIGD2A Antibody (N-term)**  
**Affinity Purified Rabbit Polyclonal Antibody (Pab)**  
**Catalog # AP14331a**

**Specification**

---

**HIGD2A Antibody (N-term) - Product Information**

Application	WB,E
Primary Accession	<a href="#">O9BW72</a>
Other Accession	<a href="#">NP_620175.1</a>
Reactivity	Human
Host	Rabbit
Clonality	Polyclonal
Isotype	Rabbit IgG
Calculated MW	11529
Antigen Region	15-44

**HIGD2A Antibody (N-term) - Additional Information**

**Gene ID** 192286

**Other Names**

HIG1 domain family member 2A, mitochondrial, RCF1 homolog B, RCF1b, HIGD2A

**Target/Specificity**

This HIGD2A antibody is generated from rabbits immunized with a KLH conjugated synthetic peptide between 15-44 amino acids from the N-terminal region of human HIGD2A.

**Dilution**

WB~~1:1000

**Format**

Purified polyclonal antibody supplied in PBS with 0.09% (W/V) sodium azide. This antibody is purified through a protein A column, followed by peptide affinity purification.

**Storage**

Maintain refrigerated at 2-8°C for up to 2 weeks. For long term storage store at -20°C in small aliquots to prevent freeze-thaw cycles.

**Precautions**

HIGD2A Antibody (N-term) is for research use only and not for use in diagnostic or therapeutic procedures.

**HIGD2A Antibody (N-term) - Protein Information**

**Name** HIGD2A

**Function** Proposed subunit of cytochrome c oxidase (COX, complex IV), which is the terminal component of the mitochondrial respiratory chain that catalyzes the reduction of oxygen to water.

May be involved in cytochrome c oxidase activity. May play a role in the assembly of respiratory supercomplexes.

#### Cellular Location

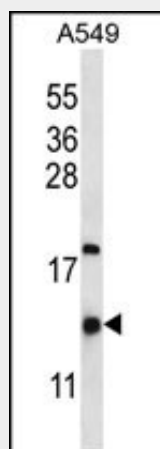
Mitochondrion membrane {ECO:0000255|PROSITE- ProRule:PRU00836, ECO:0000269|PubMed:22342701}; Multi-pass membrane protein {ECO:0000255|PROSITE-ProRule:PRU00836, ECO:0000269|PubMed:22342701}. Mitochondrion inner membrane

#### HIGD2A Antibody (N-term) - Protocols

Provided below are standard protocols that you may find useful for product applications.

- [Western Blot](#)
- [Blocking Peptides](#)
- [Dot Blot](#)
- [Immunohistochemistry](#)
- [Immunofluorescence](#)
- [Immunoprecipitation](#)
- [Flow Cytometry](#)
- [Cell Culture](#)

#### HIGD2A Antibody (N-term) - Images



HIGD2A Antibody (N-term) (Cat. #AP14331a) western blot analysis in A549 cell line lysates (35ug/lane). This demonstrates the HIGD2A antibody detected the HIGD2A protein (arrow).

#### HIGD2A Antibody (N-term) - References

Gerhard, D.S., et al. Genome Res. 14 (10B), 2121-2127 (2004) :