

**FIP200 Antibody (Center)**  
**Affinity Purified Rabbit Polyclonal Antibody (Pab)**  
**Catalog # AP14323c**

**Specification**

---

**FIP200 Antibody (Center) - Product Information**

Application	WB,E
Primary Accession	<a href="#">Q8TDY2</a>
Other Accession	<a href="#">Q9ESK9</a> , <a href="#">Q86YR4</a>
Reactivity	Human
Predicted	Mouse
Host	Rabbit
Clonality	Polyclonal
Isotype	Rabbit IgG
Antigen Region	147-177

**FIP200 Antibody (Center) - Additional Information**

**Gene ID** 9821

**Other Names**

RB1-inducible coiled-coil protein 1, FAK family kinase-interacting protein of 200 kDa, FIP200, RB1CC1, KIAA0203, RBICC

**Target/Specificity**

This FIP200 antibody is generated from rabbits immunized with a KLH conjugated synthetic peptide between 147-177 amino acids from the Central region of human FIP200.

**Dilution**

WB~~1:1000

**Format**

Purified polyclonal antibody supplied in PBS with 0.09% (W/V) sodium azide. This antibody is purified through a protein A column, followed by peptide affinity purification.

**Storage**

Maintain refrigerated at 2-8°C for up to 2 weeks. For long term storage store at -20°C in small aliquots to prevent freeze-thaw cycles.

**Precautions**

FIP200 Antibody (Center) is for research use only and not for use in diagnostic or therapeutic procedures.

**FIP200 Antibody (Center) - Protein Information**

**Name** RB1CC1 ([HGNC:15574](#))

**Synonyms** KIAA0203, RBICC

**Function** Involved in autophagy (PubMed:[21775823](#)). Regulates early events but also late events of autophagosome formation through direct interaction with Atg16L1 (PubMed:[23392225](#)). Required for the formation of the autophagosome-like double-membrane structure that surrounds the Salmonella-containing vacuole (SCV) during *S.typhimurium* infection and subsequent xenophagy (By similarity). Involved in repair of DNA damage caused by ionizing radiation, which subsequently improves cell survival by decreasing apoptosis (By similarity). Inhibits PTK2/FAK1 and PTK2B/PYK2 kinase activity, affecting their downstream signaling pathways (PubMed:[10769033](#), PubMed:[12221124](#)). Plays a role as a modulator of TGF-beta-signaling by restricting substrate specificity of RNF111 (By similarity). Functions as a DNA-binding transcription factor (PubMed:[12095676](#)). Is a potent regulator of the RB1 pathway through induction of RB1 expression (PubMed:[14533007](#)). Plays a crucial role in muscular differentiation (PubMed:[12163359](#)). Plays an indispensable role in fetal hematopoiesis and in the regulation of neuronal homeostasis (By similarity).

#### Cellular Location

Nucleus. Cytoplasm. Cytoplasm, cytosol {ECO:0000250|UniProtKB:Q9ESK9}. Preautophagosomal structure. Lysosome Note=Under starvation conditions, is localized to punctate structures primarily representing the isolation membrane that sequesters a portion of the cytoplasm resulting in the formation of an autophagosome

#### Tissue Location

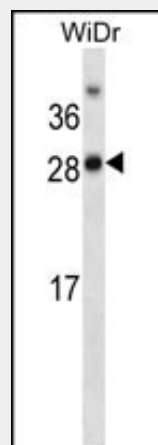
Expression levels correlated closely with those of RB1 in cancer cell lines as well as in various normal human tissues Abundantly expressed in human musculoskeletal and cultured osteosarcoma cells.

### FIP200 Antibody (Center) - Protocols

Provided below are standard protocols that you may find useful for product applications.

- [Western Blot](#)
- [Blocking Peptides](#)
- [Dot Blot](#)
- [Immunohistochemistry](#)
- [Immunofluorescence](#)
- [Immunoprecipitation](#)
- [Flow Cytometry](#)
- [Cell Culture](#)

### FIP200 Antibody (Center) - Images



FIP200 Antibody (Center) (Cat. #AP14323c) western blot analysis in WiDr cell line lysates (35ug/lane). This demonstrates the FIP200 antibody detected the FIP200 protein (arrow).