

**CRTR1 Antibody (N-term)**  
**Affinity Purified Rabbit Polyclonal Antibody (Pab)**  
**Catalog # AP14317a****Specification**

---

**CRTR1 Antibody (N-term) - Product Information**

Application	IF, WB, IHC-P-Leica, FC,E
Primary Accession	<a href="#">O9NZI6</a>
Other Accession	<a href="#">NP_055368.1</a>
Reactivity	Human, Mouse, Rat
Host	Rabbit
Clonality	Polyclonal
Isotype	Rabbit IgG
Antigen Region	14-44

**CRTR1 Antibody (N-term) - Additional Information****Gene ID** 29842**Other Names**Transcription factor CP2-like protein 1, CP2-related transcriptional repressor 1, CRTR-1,  
Transcription factor LBP-9, TFCP2L1, CRTR1, LBP9**Target/Specificity**

This CRTR1 antibody is generated from rabbits immunized with a KLH conjugated synthetic peptide between 14-44 amino acids from the N-terminal region of human CRTR1.

**Dilution**IF~~1:25  
WB~~1:2000  
IHC-P-Leica~~1:500  
FC~~1:25**Format**

Purified polyclonal antibody supplied in PBS with 0.09% (W/V) sodium azide. This antibody is purified through a protein A column, followed by peptide affinity purification.

**Storage**

Maintain refrigerated at 2-8°C for up to 2 weeks. For long term storage store at -20°C in small aliquots to prevent freeze-thaw cycles.

**Precautions**

CRTR1 Antibody (N-term) is for research use only and not for use in diagnostic or therapeutic procedures.

**CRTR1 Antibody (N-term) - Protein Information****Name** TFCP2L1

**Synonyms** CRTR1, LBP9

**Function** Transcription factor that facilitates establishment and maintenance of pluripotency in embryonic stem cells (ESCs) (PubMed:[25215486](#), PubMed:[26906118](#)). With KLF2, acts as the major effector of self-renewal that mediates induction of pluripotency downstream of LIF/STAT3 and Wnt/beta-catenin signaling (By similarity). Required for normal duct development in the salivary gland and kidney (By similarity). Coordinates the development of the kidney collecting ducts intercalated (IC) and principal (PC) cells, which regulate acid- base and salt-water homeostasis, respectively (By similarity). Regulates the expression of IC genes including subunits B1 and D2 of the V-ATPase complex, OXGR1, CA12, SLC4A1, AQP6 and IC-specific transcription factor FOXI1 (By similarity). Regulates also the expression of JAG1 and subsequent notch signaling in the collecting duct (By similarity). JAG1 initiates notch signaling in PCs but inhibits notch signaling in ICs (By similarity). Acts as a transcriptional suppressor that may suppress UBP1-mediated transcriptional activation (By similarity). Modulates the placental expression of CYP11A1 (PubMed:[10644752](#)).

**Cellular Location**

Nucleus.

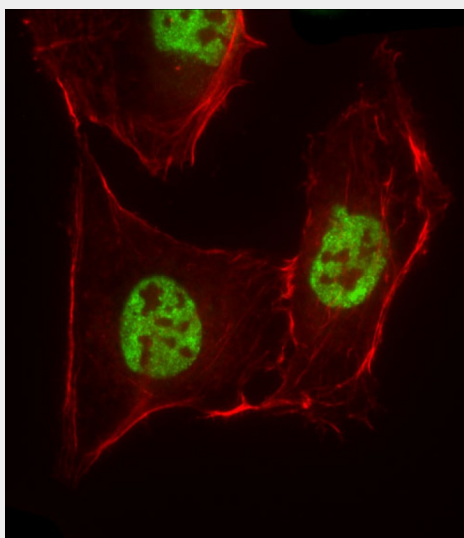
**Tissue Location**

Highly expressed in placental JEG-3 cells and very low levels of expression in non-steroidogenic cells. No expression was seen in adrenal NCI-H295A cells or in adrenal tissue

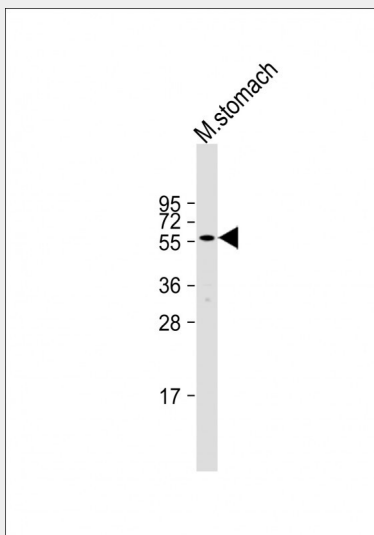
**CRTR1 Antibody (N-term) - Protocols**

Provided below are standard protocols that you may find useful for product applications.

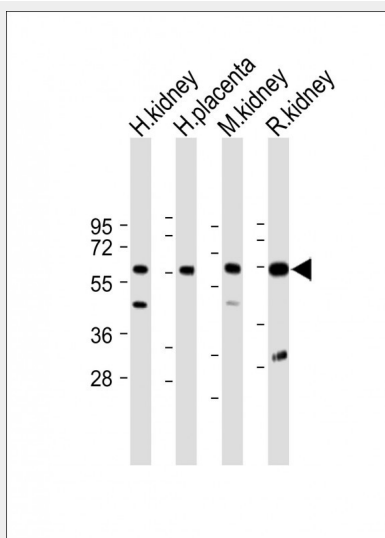
- [Western Blot](#)
- [Blocking Peptides](#)
- [Dot Blot](#)
- [Immunohistochemistry](#)
- [Immunofluorescence](#)
- [Immunoprecipitation](#)
- [Flow Cytometry](#)
- [Cell Culture](#)

**CRTR1 Antibody (N-term) - Images**

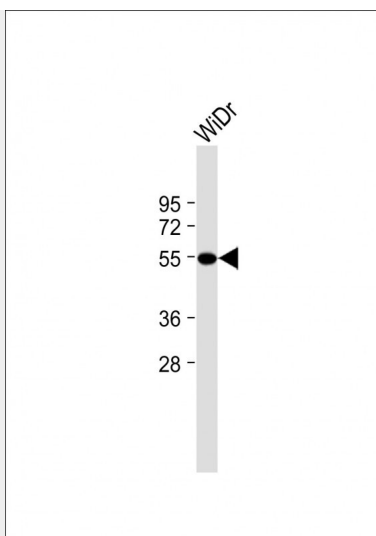
Immunofluorescent analysis of 4% paraformaldehyde-fixed, 0.1% Triton X-100 permeabilized U-2OS cells labeling TFPC2L1 with AP14317A at 1/25 dilution, followed by Dylight® 488-conjugated goat anti-Rabbit IgG (OH191631) secondary antibody at 1/200 dilution (green). Immunofluorescence image showing nucleus staining on U-2OS cell line. Cytoplasmic actin is detected with Dylight® 554 Phalloidin (1186255) at 1/500 dilution (red). The nuclear counter stain is DAPI (blue).



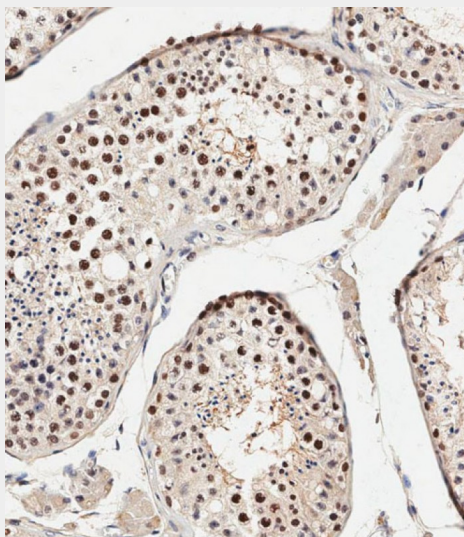
Anti-CRTRT1 Antibody (N-term) at 1:2000 dilution + mouse stomach lysate Lysates/proteins at 20 µg per lane. Secondary Goat Anti-Rabbit IgG, (H+L), Peroxidase conjugated at 1/10000 dilution. Predicted band size : 55 kDa Blocking/Dilution buffer: 5% NFDM/TBST.



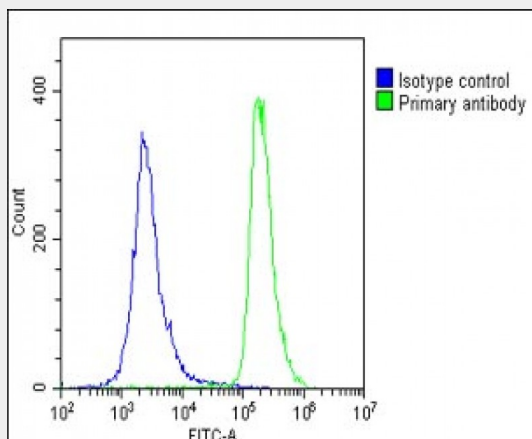
All lanes : Anti-CRTRT1 Antibody (N-term) at 1:2000 dilution Lane 1: Human kidney lysate Lane 2: Human placenta lysate Lane 3: Mouse kidney lysate Lane 4: Rat kidney lysate Lysates/proteins at 20 µg per lane. Secondary Goat Anti-Rabbit IgG, (H+L), Peroxidase conjugated at 1/10000 dilution. Predicted band size : 55 kDa Blocking/Dilution buffer: 5% NFDM/TBST.



Anti-CRTRT1 Antibody (N-term) at 1:2000 dilution + WiDr whole cell lysate Lysates/proteins at 20  $\mu$ g per lane. Secondary Goat Anti-Rabbit IgG, (H+L), Peroxidase conjugated at 1/10000 dilution. Predicted band size : 55 kDa Blocking/Dilution buffer: 5% NFDM/TBST.



Immunohistochemical analysis of paraffin-embedded human testis tissue using AP14317A performed on the Leica® BOND RXm. Samples were incubated with primary antibody(1/500) for 1 hours at room temperature. A undiluted biotinylated CRF Anti-Polyvalent HRP Polymer antibody was used as the secondary antibody.



Overlay histogram showing U-2 OS cells stained with AP14317A(green line). The cells were fixed with 2% paraformaldehyde (10 min) and then permeabilized with 90% methanol for 10 min. The cells were then incubated in 2% bovine serum albumin to block non-specific protein-protein interactions followed by the antibody (AP14317A, 1:25 dilution) for 60 min at 37°C. The secondary antibody used was Goat-Anti-Rabbit IgG, DyLight® 488 Conjugated Highly Cross-Adsorbed(1583138) at 1/200 dilution for 40 min at 37°C. Isotype control antibody (blue line) was rabbit IgG1 (1µg/1x10<sup>6</sup> cells) used under the same conditions. Acquisition of >10, 000 events was performed.

#### **CRTR1 Antibody (N-term) - Background**

Transcriptional suppressor. CRTR1 may suppress UBP1-mediated transcriptional activation. Modulates the placental expression of CYP11A1.

#### **CRTR1 Antibody (N-term) - References**

To, S., et al. PLoS ONE 5 (7), E11702 (2010) :  
Henderson, Y.C., et al. DNA Cell Biol. 27(2):71-79(2008)  
Hillier, L.W., et al. Nature 434(7034):724-731(2005)  
Huang, N., et al. Mol. Endocrinol. 19(2):409-420(2005)  
Rodda, S., et al. J. Biol. Chem. 276(5):3324-3332(2001)