

APG10L Antibody (C-term S116)
Affinity Purified Rabbit Polyclonal Antibody (Pab)
Catalog # AP14315c

Specification

APG10L Antibody (C-term S116) - Product Information

Application	WB, IHC-P,E
Primary Accession	Q9H0Y0
Other Accession	Q8R1P4 , NP_001124500.1
Reactivity	Human
Predicted	Mouse
Host	Rabbit
Clonality	Polyclonal
Isotype	Rabbit IgG
Antigen Region	96-121

APG10L Antibody (C-term S116) - Additional Information

Gene ID 83734

Other Names

Ubiquitin-like-conjugating enzyme ATG10, 632-, Autophagy-related protein 10, APG10-like, ATG10, APG10L

Target/Specificity

This APG10L antibody is generated from rabbits immunized with a KLH conjugated synthetic peptide between 96-121 amino acids of human APG10L.

Dilution

WB~~1:1000
IHC-P~~1:10~50

Format

Purified polyclonal antibody supplied in PBS with 0.09% (W/V) sodium azide. This antibody is purified through a protein A column, followed by peptide affinity purification.

Storage

Maintain refrigerated at 2-8°C for up to 2 weeks. For long term storage store at -20°C in small aliquots to prevent freeze-thaw cycles.

Precautions

APG10L Antibody (C-term S116) is for research use only and not for use in diagnostic or therapeutic procedures.

APG10L Antibody (C-term S116) - Protein Information

Name ATG10

Synonyms APG10L

Function E2-like enzyme involved in autophagy. Acts as an E2-like enzyme that catalyzes the conjugation of ATG12 to ATG5. ATG12 conjugation to ATG5 is required for autophagy. Likely serves as an ATG5-recognition molecule. Not involved in ATG12 conjugation to ATG3 (By similarity). Plays a role in adenovirus-mediated cell lysis.

Cellular Location

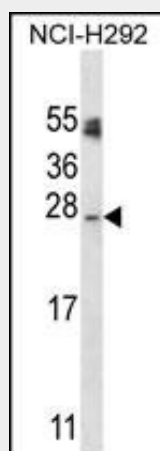
Cytoplasm.

APG10L Antibody (C-term S116) - Protocols

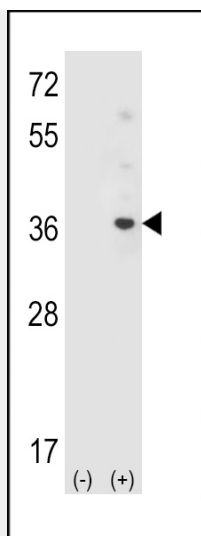
Provided below are standard protocols that you may find useful for product applications.

- [Western Blot](#)
- [Blocking Peptides](#)
- [Dot Blot](#)
- [Immunohistochemistry](#)
- [Immunofluorescence](#)
- [Immunoprecipitation](#)
- [Flow Cytometry](#)
- [Cell Culture](#)

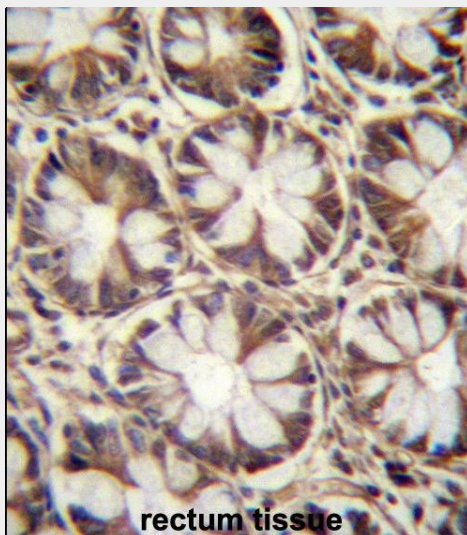
APG10L Antibody (C-term S116) - Images



APG10L Antibody (C-term S116) (Cat. #AP14315c) western blot analysis in NCI-H292 cell line lysates (35ug/lane). This demonstrates the APG10L antibody detected the APG10L protein (arrow).



Western blot analysis of APG10L (arrow) using rabbit polyclonal APG10L Antibody (C-term S116) (Cat. #AP14315c). 293 cell lysates (2 ug/lane) either nontransfected (Lane 1) or transiently transfected (Lane 2) with the APG10L gene.



APG10L Antibody (C-term S116) (Cat. #AP14315c) immunohistochemistry analysis in formalin fixed and paraffin embedded human rectum tissue followed by peroxidase conjugation of the secondary antibody and DAB staining. This data demonstrates the use of ANKS1B APG10L Antibody (C-term S116) for immunohistochemistry. Clinical relevance has not been evaluated.

APG10L Antibody (C-term S116) - Background

Autophagy is a process for the bulk degradation of cytosolic compartments by lysosomes. ATG10 is an E2-like enzyme involved in 2 ubiquitin-like modifications essential for autophagosome formation: ATG12 (MIM 609608)-ATG5 (MIM 604261) conjugation and modification of a soluble form of MAP-LC3 (MAP1LC3A; MIM 601242), a homolog of yeast Apg8, to a membrane-bound form (Nemoto et al., 2003 [PubMed 12890687]).

APG10L Antibody (C-term S116) - References

Rose, J.E., et al. Mol. Med. 16 (7-8), 247-253 (2010) :
Criollo, A., et al. Cell Death Differ. 14(5):1029-1039(2007)
Shao, Y., et al. Autophagy 3(1):10-16(2007)
Ewing, R.M., et al. Mol. Syst. Biol. 3, 89 (2007) :
Boya, P., et al. Mol. Cell. Biol. 25(3):1025-1040(2005)