

**STC2 Antibody (C-term)**  
**Affinity Purified Rabbit Polyclonal Antibody (Pab)**  
**Catalog # AP14314b**

## Specification

---

### STC2 Antibody (C-term) - Product Information

Application	WB, IHC-P,E
Primary Accession	<a href="#">O76061</a>
Other Accession	<a href="#">O9R0K8</a> , <a href="#">O88452</a> , <a href="#">NP_003705.1</a>
Reactivity	Mouse
Predicted	Rat
Host	Rabbit
Clonality	Polyclonal
Isotype	Rabbit IgG
Calculated MW	33249
Antigen Region	273-302

### STC2 Antibody (C-term) - Additional Information

**Gene ID** 8614

#### Other Names

Stanniocalcin-2, STC-2, Stanniocalcin-related protein, STC-related protein, STCRP, STC2

#### Target/Specificity

This STC2 antibody is generated from rabbits immunized with a KLH conjugated synthetic peptide between 273-302 amino acids from the C-terminal region of human STC2.

#### Dilution

WB~~1:1000  
IHC-P~~1:10~50

#### Format

Purified polyclonal antibody supplied in PBS with 0.09% (W/V) sodium azide. This antibody is purified through a protein A column, followed by peptide affinity purification.

#### Storage

Maintain refrigerated at 2-8°C for up to 2 weeks. For long term storage store at -20°C in small aliquots to prevent freeze-thaw cycles.

#### Precautions

STC2 Antibody (C-term) is for research use only and not for use in diagnostic or therapeutic procedures.

### STC2 Antibody (C-term) - Protein Information

**Name** STC2

**Function** Has an anti-hypocalcemic action on calcium and phosphate homeostasis.

**Cellular Location**

Secreted.

**Tissue Location**

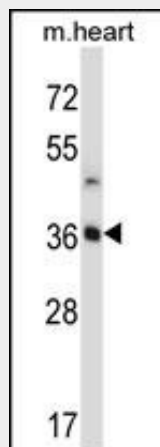
Expressed in a variety of tissues including muscle, heart, pancreas, kidney, spleen, prostate, small intestine, colon and peripheral blood leukocytes

**STC2 Antibody (C-term) - Protocols**

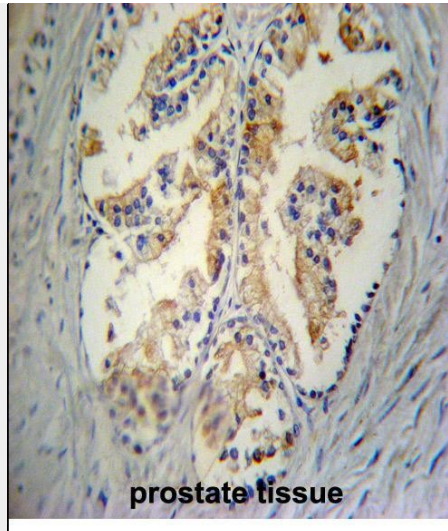
Provided below are standard protocols that you may find useful for product applications.

- [Western Blot](#)
- [Blocking Peptides](#)
- [Dot Blot](#)
- [Immunohistochemistry](#)
- [Immunofluorescence](#)
- [Immunoprecipitation](#)
- [Flow Cytometry](#)
- [Cell Culture](#)

**STC2 Antibody (C-term) - Images**



STC2 Antibody (C-term) (Cat. #AP14314b) western blot analysis in mouse heart tissue lysates (35ug/lane). This demonstrates the STC2 antibody detected the STC2 protein (arrow).



STC2 Antibody (C-term) (Cat. #AP14314b) immunohistochemistry analysis in formalin fixed and paraffin embedded human prostate tissue followed by peroxidase conjugation of the secondary antibody and DAB staining. This data demonstrates the use of STC2 Antibody (C-term) for immunohistochemistry. Clinical relevance has not been evaluated.

#### **STC2 Antibody (C-term) - Background**

This gene encodes a secreted, homodimeric glycoprotein that is expressed in a wide variety of tissues and may have autocrine or paracrine functions. The encoded protein has 10 of its 15 cysteine residues conserved among stanniocalcin family members and is phosphorylated by casein kinase 2 exclusively on its serine residues. Its C-terminus contains a cluster of histidine residues which may interact with metal ions. The protein may play a role in the regulation of renal and intestinal calcium and phosphate transport, cell metabolism, or cellular calcium/phosphate homeostasis. Constitutive overexpression of human stanniocalcin 2 in mice resulted in pre- and postnatal growth restriction, reduced bone and skeletal muscle growth, and organomegaly. Expression of this gene is induced by estrogen and altered in some breast cancers.

#### **STC2 Antibody (C-term) - References**

Yokoyama, K., et al. Nephron Clin Pract 115 (4), C237-C243 (2010) :  
Law, A.Y., et al. Exp. Cell Res. 316(3):466-476(2010)  
Volland, S., et al. Int. J. Cancer 125(9):2049-2057(2009)  
Ieta, K., et al. Int. J. Cancer 125(4):926-931(2009)  
Tamura, K., et al. Cancer Sci. 100(5):914-919(2009)