

**AFP Antibody (N-term)**  
**Affinity Purified Rabbit Polyclonal Antibody (Pab)**  
**Catalog # AP1430a****Specification**

---

**AFP Antibody (N-term) - Product Information**

Application	<b>WB, IHC-P,E</b>
Primary Accession	<a href="#">P02771</a>
Reactivity	<b>Human</b>
Host	<b>Rabbit</b>
Clonality	<b>Polyclonal</b>
Isotype	<b>Rabbit IgG</b>
Calculated MW	<b>68678</b>
Antigen Region	<b>56-85</b>

**AFP Antibody (N-term) - Additional Information****Gene ID** 174**Other Names**

Alpha-fetoprotein, Alpha-1-fetoprotein, Alpha-fetoglobulin, AFP, HPAFP

**Target/Specificity**

This AFP antibody is generated from rabbits immunized with a KLH conjugated synthetic peptide between 56-85 amino acids from the N-terminal region of human AFP.

**Dilution**WB~~1:1000  
IHC-P~~1:10~50**Format**

Purified polyclonal antibody supplied in PBS with 0.09% (W/V) sodium azide. This antibody is purified through a protein A column, followed by peptide affinity purification.

**Storage**

Maintain refrigerated at 2-8°C for up to 2 weeks. For long term storage store at -20°C in small aliquots to prevent freeze-thaw cycles.

**Precautions**

AFP Antibody (N-term) is for research use only and not for use in diagnostic or therapeutic procedures.

**AFP Antibody (N-term) - Protein Information****Name** AFP**Synonyms** HPAFP

**Function** Binds copper, nickel, and fatty acids as well as, and bilirubin less well than, serum albumin. Only a small percentage (less than 2%) of the human AFP shows estrogen-binding properties.

**Cellular Location**  
Secreted.

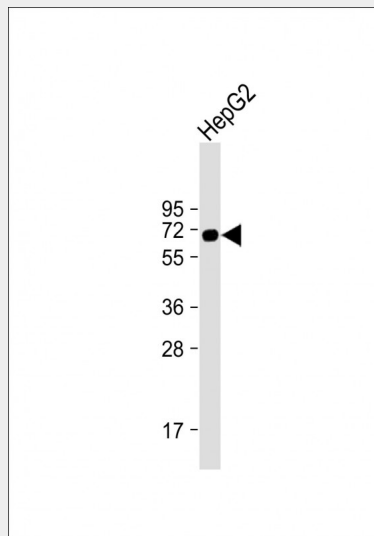
**Tissue Location**  
Plasma. Synthesized by the fetal liver and yolk sac

### AFP Antibody (N-term) - Protocols

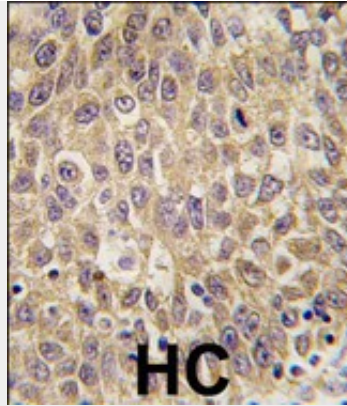
Provided below are standard protocols that you may find useful for product applications.

- [Western Blot](#)
- [Blocking Peptides](#)
- [Dot Blot](#)
- [Immunohistochemistry](#)
- [Immunofluorescence](#)
- [Immunoprecipitation](#)
- [Flow Cytometry](#)
- [Cell Culture](#)

### AFP Antibody (N-term) - Images



Anti-AFP Antibody (N-term) at 1:1000 dilution + HepG2 whole cell lysate Lysates/proteins at 20  $\mu$ g per lane. Secondary Goat Anti-Rabbit IgG, (H+L), Peroxidase conjugated at 1/10000 dilution. Predicted band size : 69 kDa Blocking/Dilution buffer: 5% NFDM/TBST.



Formalin-fixed and paraffin-embedded human hepatocarcinoma tissue reacted with AFP antibody (N-term)(Cat.#AP1430a), which was peroxidase-conjugated to the secondary antibody, followed by DAB staining. This data demonstrates the use of this antibody for immunohistochemistry; clinical relevance has not been evaluated.

#### **AFP Antibody (N-term) - Background**

Alpha-fetoprotein (AFP) is a major plasma protein produced by the yolk sac and the liver during fetal life. Alpha-fetoprotein expression in adults is often associated with hepatoma or teratoma. However, hereditary persistence of alpha-fetoprotein may also be found in individuals with no obvious pathology. This protein is thought to be the fetal counterpart of serum albumin, and the alpha-fetoprotein and albumin genes are present in tandem in the same transcriptional orientation on chromosome 4. Alpha-fetoprotein is found in monomeric as well as dimeric and trimeric forms, and binds copper, nickel, fatty acids and bilirubin. The level of alpha-fetoprotein in amniotic fluid is used to measure renal loss of protein to screen for spina bifida and anencephaly.

#### **AFP Antibody (N-term) - References**

- Yamashita,T., Cancer Res. 68 (5), 1451-1461 (2008)  
Chen,G.G., Eur J Surg Oncol 33 (7), 882-886 (2007)  
Cajaiba,M.M., Pediatr. Dev. Pathol. 10 (3), 233-238 (2007)