

Mouse Rage Antibody (N-term)
Affinity Purified Rabbit Polyclonal Antibody (Pab)
Catalog # AP14293a

Specification

Mouse Rage Antibody (N-term) - Product Information

Application	WB,E
Primary Accession	O9WVS4
Other Accession	NP_036103.1
Reactivity	Human, Mouse
Host	Rabbit
Clonality	Polyclonal
Isotype	Rabbit IgG
Calculated MW	48065
Antigen Region	76-104

Mouse Rage Antibody (N-term) - Additional Information

Gene ID 26448

Other Names

MAPK/MAK/MRK overlapping kinase, MOK protein kinase, Serine/threonine kinase 30, Mok, Rage, Stk30

Target/Specificity

This Mouse Rage antibody is generated from rabbits immunized with a KLH conjugated synthetic peptide between 76-104 amino acids from the N-terminal region of mouse Rage.

Dilution

WB~~1:1000

Format

Purified polyclonal antibody supplied in PBS with 0.09% (W/V) sodium azide. This antibody is purified through a protein A column, followed by peptide affinity purification.

Storage

Maintain refrigerated at 2-8°C for up to 2 weeks. For long term storage store at -20°C in small aliquots to prevent freeze-thaw cycles.

Precautions

Mouse Rage Antibody (N-term) is for research use only and not for use in diagnostic or therapeutic procedures.

Mouse Rage Antibody (N-term) - Protein Information

Name Mok

Synonyms Rage, Stk30

Function Able to phosphorylate several exogenous substrates and to undergo autophosphorylation (PubMed:[10421840](#)). Negatively regulates cilium length in a cAMP and mTORC1 signaling-dependent manner (PubMed:[25243405](#)).

Cellular Location

Cytoplasm. Cell projection, cilium. Nucleus

Tissue Location

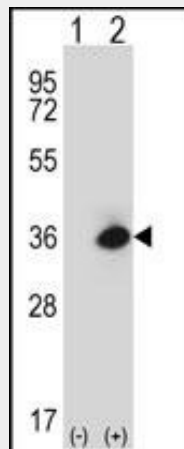
Highly expressed in testis, and less in kidney, brain and lung

Mouse Rage Antibody (N-term) - Protocols

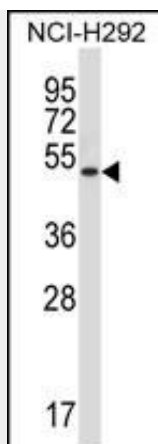
Provided below are standard protocols that you may find useful for product applications.

- [Western Blot](#)
- [Blocking Peptides](#)
- [Dot Blot](#)
- [Immunohistochemistry](#)
- [Immunofluorescence](#)
- [Immunoprecipitation](#)
- [Flow Cytometry](#)
- [Cell Culture](#)

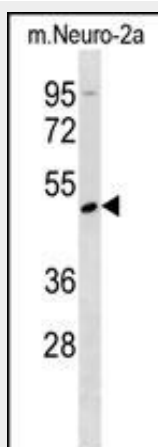
Mouse Rage Antibody (N-term) - Images



Western blot analysis of Rage (arrow) using rabbit polyclonal Mouse Rage Antibody (N-term) (Cat. #AP14293a). 293 cell lysates (2 ug/lane) either nontransfected (Lane 1) or transiently transfected (Lane 2) with the Rage gene.



Mouse Rage Antibody (N-term) (Cat. #AP14293a) western blot analysis in NCI-H292 cell line lysates (35ug/lane). This demonstrates the Rage antibody detected the Rage protein (arrow).



Mouse Rage Antibody (N-term) (Cat. #AP14293a) western blot analysis in mouse Neuro-2a cell line lysates (35ug/lane). This demonstrates the Rage antibody detected the Rage protein (arrow).

Mouse Rage Antibody (N-term) - Background

Rage is able to phosphorylate several exogenous substrates and to undergo autophosphorylation.

Mouse Rage Antibody (N-term) - References

- Sun, L., et al. *Cardiovasc. Res.* 82(2):371-381(2009)
- Zeng, S., et al. *J. Hepatol.* 50(5):929-936(2009)
- Bjork, P., et al. *PLoS Biol.* 7 (4), E97 (2009) :
- Aneja, R.K., et al. *J. Leukoc. Biol.* 84(5):1326-1334(2008)
- Chen, Y., et al. *J. Immunol.* 181(6):4272-4278(2008)