

**Rax Antibody (N-term)**  
**Affinity Purified Rabbit Polyclonal Antibody (Pab)**  
**Catalog # AP1428a****Specification**

---

**Rax Antibody (N-term) - Product Information**

Application	<b>WB, IHC-P,E</b>
Primary Accession	<a href="#">O9Y2V3</a>
Other Accession	<a href="#">O9PVX0</a>
Reactivity	<b>Human, Mouse</b>
Predicted	<b>Chicken</b>
Host	<b>Rabbit</b>
Clonality	<b>Polyclonal</b>
Isotype	<b>Rabbit IgG</b>
Antigen Region	<b>15-46</b>

**Rax Antibody (N-term) - Additional Information****Gene ID** 30062**Other Names**

Retinal homeobox protein Rx, Retina and anterior neural fold homeobox protein, RAX, RX

**Target/Specificity**

This Rax antibody is generated from rabbits immunized with a KLH conjugated synthetic peptide between 15-46 amino acids from the N-terminal region of human Rax.

**Dilution**

WB~~1:1000

IHC-P~~1:10~50

**Format**

Purified polyclonal antibody supplied in PBS with 0.09% (W/V) sodium azide. This antibody is prepared by Saturated Ammonium Sulfate (SAS) precipitation followed by dialysis against PBS.

**Storage**

Maintain refrigerated at 2-8°C for up to 2 weeks. For long term storage store at -20°C in small aliquots to prevent freeze-thaw cycles.

**Precautions**

Rax Antibody (N-term) is for research use only and not for use in diagnostic or therapeutic procedures.

**Rax Antibody (N-term) - Protein Information****Name** RAX**Synonyms** RX

**Function** Plays a critical role in eye formation by regulating the initial specification of retinal cells and/or their subsequent proliferation. Binds to the photoreceptor conserved element-I (PCE- 1/Ret 1) in the photoreceptor cell-specific arrestin promoter.

**Cellular Location**

Nucleus.

**Tissue Location**

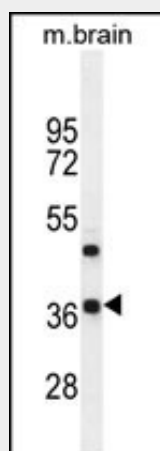
Expressed in the developing eye and weakly expressed in the adult retina

**Rax Antibody (N-term) - Protocols**

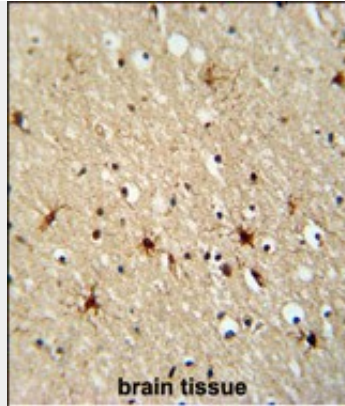
Provided below are standard protocols that you may find useful for product applications.

- [Western Blot](#)
- [Blocking Peptides](#)
- [Dot Blot](#)
- [Immunohistochemistry](#)
- [Immunofluorescence](#)
- [Immunoprecipitation](#)
- [Flow Cytometry](#)
- [Cell Culture](#)

**Rax Antibody (N-term) - Images**



Western blot analysis of anti-Rax Pab (Cat.#AP1428a) in mouse brain tissue lysates (35ug/lane). Rax (arrow) was detected using the purified Pab.



Formalin-fixed and paraffin-embedded human brain tissue reacted with Rax Antibody (N-term) (Cat.#AP1428a), which was peroxidase-conjugated to the secondary antibody, followed by DAB staining. This data demonstrates the use of this antibody for immunohistochemistry; clinical relevance has not been evaluated.

#### **Rax Antibody (N-term) - Background**

Rax plays a critical role in eye formation by regulating the initial specification of retinal cells and/or their subsequent proliferation. It binds to the photoreceptor conserved element-I (PCE-1/Ret 1) in the photoreceptor cell-specific arrestin promoter.

#### **Rax Antibody (N-term) - References**

- Voronina,V.A., Hum. Mol. Genet. 13 (3), 315-322 (2004)
- Mikkola,I., J. Biol. Chem. 276 (6), 4109-4118 (2001)
- Mathers,P.H., Cell. Mol. Life Sci. 57 (2), 186-194 (2000)