

CNOT2 Antibody (Center)
Affinity Purified Rabbit Polyclonal Antibody (Pab)
Catalog # AP14239c

Specification

CNOT2 Antibody (Center) - Product Information

Application	WB,E
Primary Accession	O9NZN8
Other Accession	O8C5L3 , NP_055330.1
Reactivity	Human
Predicted	Mouse
Host	Rabbit
Clonality	Polyclonal
Isotype	Rabbit IgG
Antigen Region	272-301

CNOT2 Antibody (Center) - Additional Information

Gene ID 4848

Other Names

CCR4-NOT transcription complex subunit 2, CCR4-associated factor 2, CNOT2, CDC36, NOT2

Target/Specificity

This CNOT2 antibody is generated from rabbits immunized with a KLH conjugated synthetic peptide between 272-301 amino acids from the Central region of human CNOT2.

Dilution

WB~~1:1000

Format

Purified polyclonal antibody supplied in PBS with 0.09% (W/V) sodium azide. This antibody is purified through a protein A column, followed by peptide affinity purification.

Storage

Maintain refrigerated at 2-8°C for up to 2 weeks. For long term storage store at -20°C in small aliquots to prevent freeze-thaw cycles.

Precautions

CNOT2 Antibody (Center) is for research use only and not for use in diagnostic or therapeutic procedures.

CNOT2 Antibody (Center) - Protein Information

Name CNOT2

Synonyms CDC36, NOT2

Function Component of the CCR4-NOT complex which is one of the major cellular mRNA deadenylases and is linked to various cellular processes including bulk mRNA degradation, miRNA-mediated repression, translational repression during translational initiation and general transcription regulation. Additional complex functions may be a consequence of its influence on mRNA expression. Required for the CCR4-NOT complex structural integrity. Can repress transcription and may link the CCR4-NOT complex to transcriptional regulation; the repressive function may specifically involve the N-CoR repressor complex containing HDAC3, NCOR1 and NCOR2. Involved in the maintenance of embryonic stem (ES) cell identity.

Cellular Location

Cytoplasm. Nucleus

Tissue Location

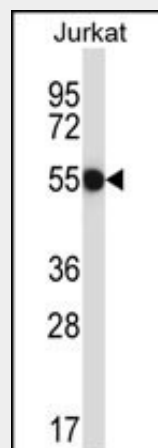
Ubiquitous. Highly expressed in brain, heart, thymus, spleen, kidney, liver, small intestine, placenta, lung and peripheral blood leukocytes.

CNOT2 Antibody (Center) - Protocols

Provided below are standard protocols that you may find useful for product applications.

- [Western Blot](#)
- [Blocking Peptides](#)
- [Dot Blot](#)
- [Immunohistochemistry](#)
- [Immunofluorescence](#)
- [Immunoprecipitation](#)
- [Flow Cytometry](#)
- [Cell Culture](#)

CNOT2 Antibody (Center) - Images



CNOT2 Antibody (Center) (Cat. #AP14239c) western blot analysis in Jurkat cell line lysates (35ug/lane). This demonstrates the CNOT2 antibody detected the CNOT2 protein (arrow).

CNOT2 Antibody (Center) - Background

This gene encodes a subunit of the multi-component CCR4-NOT complex. The CCR4-NOT complex regulates mRNA synthesis and degradation and is also thought to be involved in mRNA splicing, transport and localization. The encoded protein interacts with

histone deacetylases and functions as a repressor of polymerase II transcription. Alternatively spliced transcript variants have been observed for this gene.

CNOT2 Antibody (Center) - References

- Lau, N.C., et al. *Biochem. J.* 422(3):443-453(2009)
- Miyasaka, T., et al. *Cancer Sci.* 99(4):755-761(2008)
- Morita, M., et al. *Mol. Cell. Biol.* 27(13):4980-4990(2007)
- Sugiyama, N., et al. *Mol. Cell Proteomics* 6(6):1103-1109(2007)
- Matsuoka, S., et al. *Science* 316(5828):1160-1166(2007)