

MAS1 Antibody (C-term)
Affinity Purified Rabbit Polyclonal Antibody (Pab)
Catalog # AP14230b

Specification

MAS1 Antibody (C-term) - Product Information

Application	WB,E
Primary Accession	P04201
Other Accession	NP_002368.1
Reactivity	Human
Host	Rabbit
Clonality	Polyclonal
Isotype	Rabbit IgG
Calculated MW	37465
Antigen Region	285-314

MAS1 Antibody (C-term) - Additional Information

Gene ID 4142

Other Names

Proto-oncogene Mas, MAS1, MAS

Target/Specificity

This MAS1 antibody is generated from rabbits immunized with a KLH conjugated synthetic peptide between 285-314 amino acids from the C-terminal region of human MAS1.

Dilution

WB~~1:1000

Format

Purified polyclonal antibody supplied in PBS with 0.09% (W/V) sodium azide. This antibody is purified through a protein A column, followed by peptide affinity purification.

Storage

Maintain refrigerated at 2-8°C for up to 2 weeks. For long term storage store at -20°C in small aliquots to prevent freeze-thaw cycles.

Precautions

MAS1 Antibody (C-term) is for research use only and not for use in diagnostic or therapeutic procedures.

MAS1 Antibody (C-term) - Protein Information

Name MAS1

Synonyms MAS

Function Receptor for angiotensin 1-7 (By similarity). Acts specifically as a functional antagonist of AGTR1 (angiotensin-2 type 1 receptor), although it up-regulates AGTR1 receptor levels. Positive regulation of AGTR1 levels occurs through activation of the G-proteins GNA11 and GNAQ, and stimulation of the protein kinase C signaling cascade. The antagonist effect on AGTR1 function is probably due to AGTR1 being physically altered by MAS1.

Cellular Location

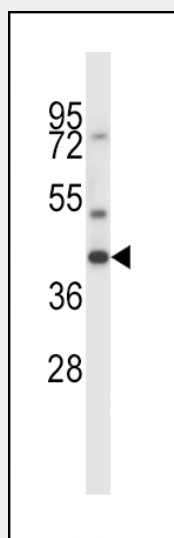
Cell membrane; Multi-pass membrane protein

MAS1 Antibody (C-term) - Protocols

Provided below are standard protocols that you may find useful for product applications.

- [Western Blot](#)
- [Blocking Peptides](#)
- [Dot Blot](#)
- [Immunohistochemistry](#)
- [Immunofluorescence](#)
- [Immunoprecipitation](#)
- [Flow Cytometry](#)
- [Cell Culture](#)

MAS1 Antibody (C-term) - Images



MAS1 Antibody (C-term) (Cat. #AP14230b) western blot analysis in CEM cell line lysates (35ug/lane). This demonstrates the MAS1 antibody detected the MAS1 protein (arrow).

MAS1 Antibody (C-term) - Background

The structure of the MAS1 product indicates that it belongs to the class of receptors that are coupled to GTP-binding proteins and share a conserved structural motif, which is described as a '7-transmembrane segment' following the prediction that these hydrophobic segments form membrane-spanning alpha-helices. The MAS1 protein may be a receptor that, when activated, modulates a critical component in a growth-regulating pathway to bring about oncogenic effects.

MAS1 Antibody (C-term) - References

- Yang, J.K., et al. Diabetes Care 33(10):2271-2273(2010)
Reis, A.B., et al. J. Mol. Histol. 41(1):75-80(2010)
Trynka, G., et al. Gut 58(8):1078-1083(2009)
Iwai, M., et al. Hypertens. Res. 32(7):533-536(2009)
Vaz-Silva, J., et al. Reprod Sci 16(3):247-256(2009)