

**DRAGON (RGMB) Antibody (C-term)**  
**Purified Rabbit Polyclonal Antibody (Pab)**  
**Catalog # AP1421b**

**Specification**

---

**DRAGON (RGMB) Antibody (C-term) - Product Information**

Application	WB, IHC-P,E
Primary Accession	<a href="#">O6NW40</a>
Other Accession	<a href="#">O7TQ33</a>
Reactivity	Human, Mouse
Host	Rabbit
Clonality	Polyclonal
Isotype	Rabbit IgG
Calculated MW	47547
Antigen Region	376-406

**DRAGON (RGMB) Antibody (C-term) - Additional Information**

**Gene ID** 285704

**Other Names**

RGM domain family member B, DRG11-responsive axonal guidance and outgrowth of neurite, DRAGON, RGMB

**Target/Specificity**

This DRAGON (RGMB) antibody is generated from rabbits immunized with a KLH conjugated synthetic peptide between 376-406 amino acids from the C-terminal region of human DRAGON (RGMB).

**Dilution**

WB~~1:2000  
IHC-P~~1:10~50

**Format**

Purified polyclonal antibody supplied in PBS with 0.09% (W/V) sodium azide. This antibody is purified through a protein G column, followed by dialysis against PBS.

**Storage**

Maintain refrigerated at 2-8°C for up to 2 weeks. For long term storage store at -20°C in small aliquots to prevent freeze-thaw cycles.

**Precautions**

DRAGON (RGMB) Antibody (C-term) is for research use only and not for use in diagnostic or therapeutic procedures.

**DRAGON (RGMB) Antibody (C-term) - Protein Information**

**Name** RGMB {ECO:0000303|PubMed:19324014, ECO:0000312|HGNC:HGNC:26896}

**Function** Member of the repulsive guidance molecule (RGM) family that contributes to the patterning of the developing nervous system (By similarity). Acts as a bone morphogenetic protein (BMP) coreceptor that potentiates BMP signaling (By similarity). Promotes neuronal adhesion (By similarity). May inhibit neurite outgrowth.

#### Cellular Location

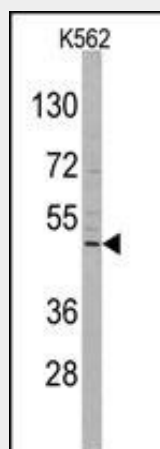
Cell membrane {ECO:0000250|UniProtKB:Q7TQ33}; Lipid-anchor, GPI-anchor {ECO:0000250|UniProtKB:Q7TQ33}. Membrane raft {ECO:0000250|UniProtKB:Q7TQ33}

#### DRAGON (RGMB) Antibody (C-term) - Protocols

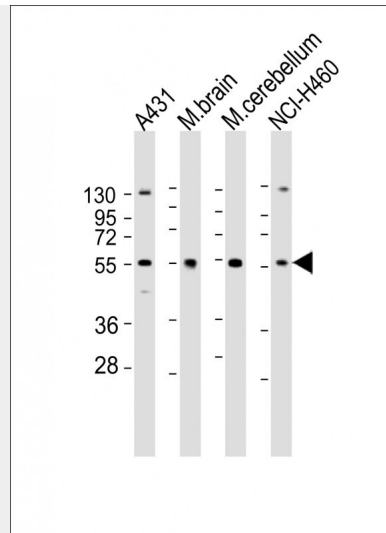
Provided below are standard protocols that you may find useful for product applications.

- [Western Blot](#)
- [Blocking Peptides](#)
- [Dot Blot](#)
- [Immunohistochemistry](#)
- [Immunofluorescence](#)
- [Immunoprecipitation](#)
- [Flow Cytometry](#)
- [Cell Culture](#)

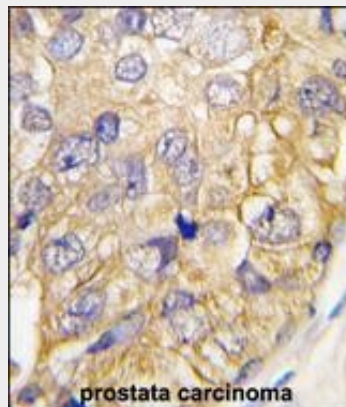
#### DRAGON (RGMB) Antibody (C-term) - Images



Western blot analysis of DRAGON (RGMB) Antibody (C-term) in K562 cell line lysates (35ug/lane). DRAGON (arrow) was detected using the purified Pab.



All lanes : Anti-DRAGON (RGMB) Antibody (C-term) at 1:2000 dilution Lane 1: A431 whole cell lysate Lane 2: mouse brain lysate Lane 3: mouse cerebellum lysate Lane 4: NCI-H460 whole cell lysate Lysates/proteins at 20 µg per lane. Secondary Goat Anti-Rabbit IgG, (H+L), Peroxidase conjugated at 1/10000 dilution. Predicted band size : 48 kDa Blocking/Dilution buffer: 5% NFDm/TBST.



Formalin-fixed and paraffin-embedded human prostata carcinoma tissue reacted with DRAGON (RGMB) (C-term) (Cat.#AP1421b), which was peroxidase-conjugated to the secondary antibody, followed by DAB staining. This data demonstrates the use of this antibody for immunohistochemistry; clinical relevance has not been evaluated.

### **DRAGON (RGMB) Antibody (C-term) - Background**

Repulsive Guidance Molecule B (RGMB) is primarily expressed in the central nervous system. RGM A and B both appear at every level of the developing neural axis, where they colocalize to a large extent in the mantle layer, although only RGMA appears in the neuroepithelium, and only RGMB in the peripheral nervous system. During development, both RGMA and B appear also in lung and in limb cartilage, while RGMB has additional expression domains in pancreas.

### **DRAGON (RGMB) Antibody (C-term) - References**

Schnichels,S., Gene Expr. Patterns 8 (1), 1-11 (2007)  
Metzger,M., Dev. Dyn. 234 (1), 169-175 (2005)  
Xia,Y., Endocrinology 146 (8), 3614-3621 (2005)