

**RNF20 Antibody (N-term)**  
**Affinity Purified Rabbit Polyclonal Antibody (Pab)**  
**Catalog # AP14192A**

**Specification**

---

**RNF20 Antibody (N-term) - Product Information**

Application	WB,E
Primary Accession	<a href="#">Q5VTR2</a>
Other Accession	<a href="#">Q5DTM8</a> , <a href="#">A2VDP1</a> , <a href="#">NP_062538.5</a>
Reactivity	Human
Predicted	Bovine, Mouse
Host	Rabbit
Clonality	Polyclonal
Isotype	Rabbit IgG
Calculated MW	113662
Antigen Region	117-146

**RNF20 Antibody (N-term) - Additional Information**

**Gene ID** 56254

**Other Names**

E3 ubiquitin-protein ligase BRE1A, BRE1-A, hBRE1, 632-, RING finger protein 20, RNF20, BRE1A

**Target/Specificity**

This RNF20 antibody is generated from rabbits immunized with a KLH conjugated synthetic peptide between 117-146 amino acids from the N-terminal region of human RNF20.

**Dilution**

WB~~1:1000

**Format**

Purified polyclonal antibody supplied in PBS with 0.09% (W/V) sodium azide. This antibody is purified through a protein A column, followed by peptide affinity purification.

**Storage**

Maintain refrigerated at 2-8°C for up to 2 weeks. For long term storage store at -20°C in small aliquots to prevent freeze-thaw cycles.

**Precautions**

RNF20 Antibody (N-term) is for research use only and not for use in diagnostic or therapeutic procedures.

**RNF20 Antibody (N-term) - Protein Information**

**Name** RNF20

**Synonyms** BRE1A

**Function** Component of the RNF20/40 E3 ubiquitin-protein ligase complex that mediates monoubiquitination of 'Lys-120' of histone H2B (H2BK120ub1). H2BK120ub1 gives a specific tag for epigenetic transcriptional activation and is also prerequisite for histone H3 'Lys-4' and 'Lys-79' methylation (H3K4me and H3K79me, respectively). It thereby plays a central role in histone code and gene regulation. The RNF20/40 complex forms a H2B ubiquitin ligase complex in cooperation with the E2 enzyme UBE2A or UBE2B; reports about the cooperation with UBE2E1/UBCH are contradictory. Required for transcriptional activation of Hox genes. Recruited to the MDM2 promoter, probably by being recruited by p53/TP53, and thereby acts as a transcriptional coactivator. Mediates the polyubiquitination of isoform 2 of PA2G4 in cancer cells leading to its proteasome-mediated degradation.

#### **Cellular Location**

Nucleus

#### **Tissue Location**

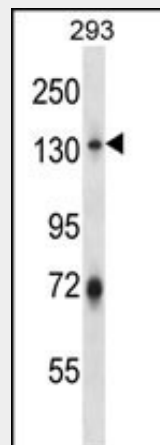
Expressed in the normal brain and also in malignant gliomas (at protein level).

### **RNF20 Antibody (N-term) - Protocols**

Provided below are standard protocols that you may find useful for product applications.

- [Western Blot](#)
- [Blocking Peptides](#)
- [Dot Blot](#)
- [Immunohistochemistry](#)
- [Immunofluorescence](#)
- [Immunoprecipitation](#)
- [Flow Cytometry](#)
- [Cell Culture](#)

### **RNF20 Antibody (N-term) - Images**



RNF20 Antibody (N-term) (Cat. #AP14192a) western blot analysis in 293 cell line lysates (35ug/lane). This demonstrates the RNF20 antibody detected the RNF20 protein (arrow).

### **RNF20 Antibody (N-term) - Background**

The protein encoded by this gene shares similarity with BRE1 of *S. cerevisiae*. Yeast BRE1 is a ubiquitin ligase required for the ubiquitination of histone H2B and the methylation of

histone H3.

### **RNF20 Antibody (N-term) - References**

Chernikova, S.B., et al. Radiat. Res. 174(5):558-565(2010)

Kim, J., et al. Cell 137(3):459-471(2009)

Liu, Z., et al. Mol. Biol. Cell 20(3):757-768(2009)

Shema, E., et al. Genes Dev. 22(19):2664-2676(2008)

Barber, T.D., et al. Proc. Natl. Acad. Sci. U.S.A. 105(9):3443-3448(2008)