

**K Cadherin (CDH6) Antibody (N-term)**  
**Affinity Purified Rabbit Polyclonal Antibody (Pab)**  
**Catalog # AP1415a**

**Specification**

---

**K Cadherin (CDH6) Antibody (N-term) - Product Information**

Application	WB,E
Primary Accession	<a href="#">P55285</a>
Other Accession	<a href="#">P55280</a> , <a href="#">P97326</a> , <a href="#">Q3SWX5</a>
Reactivity	Human
Predicted	Bovine, Mouse, Rat
Host	Rabbit
Clonality	Polyclonal
Isotype	Rabbit IgG
Antigen Region	61-89

**K Cadherin (CDH6) Antibody (N-term) - Additional Information**

**Gene ID** 1004

**Other Names**

Cadherin-6, Kidney cadherin, K-cadherin, CDH6

**Target/Specificity**

This K Cadherin (CDH6) antibody is generated from rabbits immunized with a KLH conjugated synthetic peptide between 61-89 amino acids from the N-terminal region of human K Cadherin (CDH6).

**Dilution**

WB~~1:1000

**Format**

Purified polyclonal antibody supplied in PBS with 0.09% (W/V) sodium azide. This antibody is purified through a protein A column, followed by peptide affinity purification.

**Storage**

Maintain refrigerated at 2-8°C for up to 2 weeks. For long term storage store at -20°C in small aliquots to prevent freeze-thaw cycles.

**Precautions**

K Cadherin (CDH6) Antibody (N-term) is for research use only and not for use in diagnostic or therapeutic procedures.

**K Cadherin (CDH6) Antibody (N-term) - Protein Information**

**Name** CDH6

**Function** Cadherins are calcium-dependent cell adhesion proteins. They preferentially interact

with themselves in a homophilic manner in connecting cells; cadherins may thus contribute to the sorting of heterogeneous cell types.

#### Cellular Location

Cell membrane; Single-pass type I membrane protein

#### Tissue Location

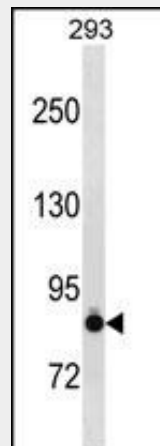
Highly expressed in brain, cerebellum, and kidney. Lung, pancreas, and gastric mucosa show a weak expression. Also expressed in certain liver and kidney carcinomas

### K Cadherin (CDH6) Antibody (N-term) - Protocols

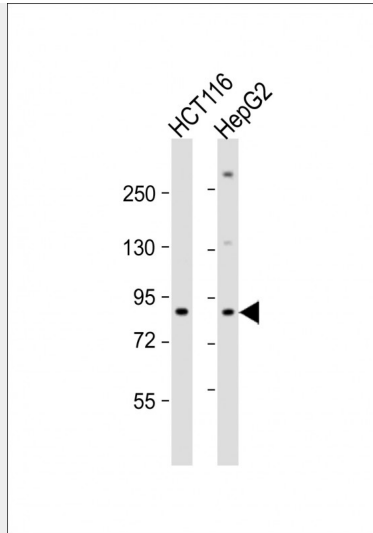
Provided below are standard protocols that you may find useful for product applications.

- [Western Blot](#)
- [Blocking Peptides](#)
- [Dot Blot](#)
- [Immunohistochemistry](#)
- [Immunofluorescence](#)
- [Immunoprecipitation](#)
- [Flow Cytometry](#)
- [Cell Culture](#)

### K Cadherin (CDH6) Antibody (N-term) - Images



CDH6 Antibody (N-term) (Cat.#AP1415a) western blot analysis in 293 cell line lysates (35ug/lane). This demonstrates the CDH6 antibody detected the CDH6 protein (arrow).



All lanes : Anti-CDH6 Antibody (N-term) at 1:1000 dilution Lane 1: HCT116 whole cell lysate Lane 2: HepG2 whole cell lysate Lysates/proteins at 20 µg per lane. Secondary Goat Anti-Rabbit IgG, (H+L), Peroxidase conjugated at 1/10000 dilution. Predicted band size : 88 kDa Blocking/Dilution buffer: 5% NFDm/TBST.

#### **K Cadherin (CDH6) Antibody (N-term) - Background**

CDH6 is a type II classical cadherin from the cadherin superfamily. It is a calcium dependent cell-cell adhesion membrane glycoprotein comprised of five extracellular cadherin repeats, a transmembrane region and a highly conserved cytoplasmic tail. Cadherins mediate cell-cell binding in a homophilic manner, contributing to the sorting of heterogeneous cell types and the maintenance of orderly structures such as epithelium. Strong transcriptional expression of the CDH6 gene has been observed in hepatocellular and renal carcinoma cell lines, suggesting a possible role in metastasis and invasion.

#### **K Cadherin (CDH6) Antibody (N-term) - References**

Liu,T., J. Proteome Res. 4 (6), 2070-2080 (2005) Shimoyama,Y., Biochem. J. 349 (PT 1), 159-167 (2000) Shimoyama,Y., J. Biol. Chem. 274 (17), 11987-11994 (1999)

#### **K Cadherin (CDH6) Antibody (N-term) - Citations**

- [Generation of induced pluripotent stem cells from human renal proximal tubular cells with only two transcription factors, OCT4 and SOX2.](#)