

**KLKB1 Antibody (C-term)**  
**Affinity Purified Rabbit Polyclonal Antibody (Pab)**  
**Catalog # AP14109b**

**Specification**

---

**KLKB1 Antibody (C-term) - Product Information**

Application	WB,E
Primary Accession	<a href="#">P03952</a>
Other Accession	<a href="#">NP_000883.2</a>
Reactivity	Human
Host	Rabbit
Clonality	Polyclonal
Isotype	Rabbit IgG
Calculated MW	71343
Antigen Region	508-537

**KLKB1 Antibody (C-term) - Additional Information**

**Gene ID** 3818

**Other Names**

Plasma kallikrein, Fletcher factor, Kininogenin, Plasma prekallikrein, Plasma kallikrein heavy chain, Plasma kallikrein light chain, KLKB1, KLK3

**Target/Specificity**

This KLKB1 antibody is generated from rabbits immunized with a KLH conjugated synthetic peptide between 508-537 amino acids from the C-terminal region of human KLKB1.

**Dilution**

WB~~1:1000

**Format**

Purified polyclonal antibody supplied in PBS with 0.09% (W/V) sodium azide. This antibody is purified through a protein A column, followed by peptide affinity purification.

**Storage**

Maintain refrigerated at 2-8°C for up to 2 weeks. For long term storage store at -20°C in small aliquots to prevent freeze-thaw cycles.

**Precautions**

KLKB1 Antibody (C-term) is for research use only and not for use in diagnostic or therapeutic procedures.

**KLKB1 Antibody (C-term) - Protein Information**

**Name** KLKB1

**Synonyms** KLK3

**Function** Participates in the surface-dependent activation of blood coagulation. Activates, in a reciprocal reaction, coagulation factor XII/F12 after binding to negatively charged surfaces. Releases bradykinin from HMW kininogen and may also play a role in the renin- angiotensin system by converting prorenin into renin.

**Cellular Location**

Secreted.

**Tissue Location**

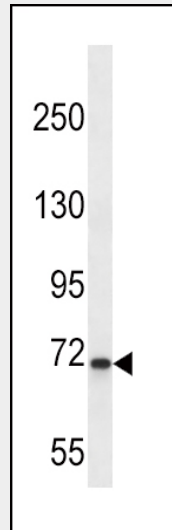
Found in plasma (at protein level).

**KLKB1 Antibody (C-term) - Protocols**

Provided below are standard protocols that you may find useful for product applications.

- [Western Blot](#)
- [Blocking Peptides](#)
- [Dot Blot](#)
- [Immunohistochemistry](#)
- [Immunofluorescence](#)
- [Immunoprecipitation](#)
- [Flow Cytometry](#)
- [Cell Culture](#)

**KLKB1 Antibody (C-term) - Images**



KLKB1 Antibody (C-term) (Cat. #AP14109b) western blot analysis in K562 cell line lysates (35ug/lane). This demonstrates the KLKB1 antibody detected the KLKB1 protein (arrow).

**KLKB1 Antibody (C-term) - Background**

Plasma prekallikrein is a glycoprotein that participates in the surface-dependent activation of blood coagulation, fibrinolysis, kinin generation and inflammation. It is synthesized in the liver and secreted into the blood as a single polypeptide chain. Plasma prekallikrein is converted to plasma kallikrein by factor XIIa by the cleavage of an internal Arg-Ile bond. Plasma

kallikrein therefore is composed of a heavy chain and a light chain held together by a disulphide bond. The heavy chain originates from the amino-terminal end of the zymogen and contains 4 tandem repeats of 90 or 91 amino acids. Each repeat harbors a novel structure called the apple domain. The heavy chain is required for the surface-dependent pro-coagulant activity of plasma kallikrein. The light chain contains the active site or catalytic domain of the enzyme and is homologous to the trypsin family of serine proteases. Plasma prekallikrein deficiency causes a prolonged activated partial thromboplastin time in patients.

#### **KLKB1 Antibody (C-term) - References**

- MacKenzie, J.A., et al. Appl Physiol Nutr Metab 35(4):518-525(2010)  
Han, S., et al. Hum. Immunol. 71(7):727-730(2010)  
Rajaraman, P., et al. Cancer Epidemiol. Biomarkers Prev. 19(5):1356-1361(2010)  
Eeckhoudt, S.L., et al. Thromb. Haemost. 103(4):866-867(2010)  
Barber, M.J., et al. PLoS ONE 5 (3), E9763 (2010) :