

BBC3 Antibody (Center)
Affinity Purified Rabbit Polyclonal Antibody (Pab)
Catalog # AP14100c**Specification**

BBC3 Antibody (Center) - Product Information

| | |
|-------------------|--|
| Application | WB, IHC-P,E |
| Primary Accession | O9BXH1 |
| Other Accession | NP_055232.1 , NP_001120714.1 , NP_001120713.1 |
| Reactivity | Human |
| Host | Rabbit |
| Clonality | Polyclonal |
| Isotype | Rabbit IgG |
| Calculated MW | 20532 |
| Antigen Region | 109-137 |

BBC3 Antibody (Center) - Additional Information**Gene ID** 27113**Other Names**

Bcl-2-binding component 3, JFY-1, p53 up-regulated modulator of apoptosis, BBC3, PUMA

Target/Specificity

This BBC3 antibody is generated from rabbits immunized with a KLH conjugated synthetic peptide between 109-137 amino acids from the Central region of human BBC3.

DilutionWB~~1:1000
IHC-P~~1:10~50**Format**

Purified polyclonal antibody supplied in PBS with 0.09% (W/V) sodium azide. This antibody is purified through a protein A column, followed by peptide affinity purification.

Storage

Maintain refrigerated at 2-8°C for up to 2 weeks. For long term storage store at -20°C in small aliquots to prevent freeze-thaw cycles.

Precautions

BBC3 Antibody (Center) is for research use only and not for use in diagnostic or therapeutic procedures.

BBC3 Antibody (Center) - Protein Information**Name** BBC3

Synonyms PUMA

Function Essential mediator of p53/TP53-dependent and p53/TP53- independent apoptosis (PubMed:[11463391](#), PubMed:[23340338](#)). Promotes partial unfolding of BCL2L1 and dissociation of BCL2L1 from p53/TP53, releasing the bound p53/TP53 to induce apoptosis (PubMed:[23340338](#)). Regulates ER stress-induced neuronal apoptosis (By similarity).

Cellular Location

Mitochondrion Note=Localized to the mitochondria in order to induce cytochrome c release

Tissue Location

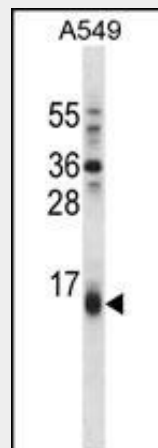
Ubiquitously expressed.

BBC3 Antibody (Center) - Protocols

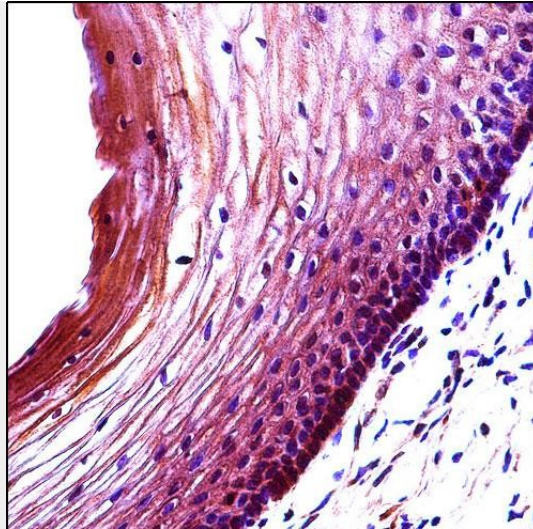
Provided below are standard protocols that you may find useful for product applications.

- [Western Blot](#)
- [Blocking Peptides](#)
- [Dot Blot](#)
- [Immunohistochemistry](#)
- [Immunofluorescence](#)
- [Immunoprecipitation](#)
- [Flow Cytometry](#)
- [Cell Culture](#)

BBC3 Antibody (Center) - Images



BBC3 Antibody (Center) (Cat. #AP14100c) western blot analysis in A549 cell line lysates (35ug/lane). This demonstrates the BBC3 antibody detected the BBC3 protein (arrow).



BBC3 Antibody (Center) (Cat. #AP14100c) immunohistochemistry analysis in formalin fixed and paraffin embedded human cervix tissue followed by peroxidase conjugation of the secondary antibody and DAB staining. This data demonstrates the use of BBC3 Antibody (Center) for immunohistochemistry. Clinical relevance has not been evaluated.

BBC3 Antibody (Center) - Background

BBC3 is an essential mediator of p53-dependent and p53-independent apoptosis.

BBC3 Antibody (Center) - References

- Cazanave, S.C., et al. *Am. J. Physiol. Gastrointest. Liver Physiol.* 299 (1), G236-G243 (2010) :
Gurzov, E.N., et al. *J. Biol. Chem.* 285(26):19910-19920(2010)
Hemmati, P.G., et al. *J. Mol. Med.* 88(6):609-622(2010)
Gomes, N.P., et al. *Genes Dev.* 24(10):1022-1034(2010)
Liu, F.T., et al. *Biochem. Biophys. Res. Commun.* 310(3):956-962(2003)