

Mouse Npr1 Antibody (N-term)
Affinity Purified Rabbit Polyclonal Antibody (Pab)
Catalog # AP14073A

Specification

Mouse Npr1 Antibody (N-term) - Product Information

Application	WB, IHC-P,E
Primary Accession	P18293
Other Accession	NP_032753.5
Reactivity	Mouse
Host	Rabbit
Clonality	Polyclonal
Isotype	Rabbit IgG
Antigen Region	198-226

Mouse Npr1 Antibody (N-term) - Additional Information

Gene ID 18160

Other Names

Atrial natriuretic peptide receptor 1, Atrial natriuretic peptide receptor type A, ANP-A, ANPR-A, NPR-A, Guanylate cyclase A, GC-A, Npr1, Npra

Target/Specificity

This Mouse Npr1 antibody is generated from rabbits immunized with a KLH conjugated synthetic peptide between 198-226 amino acids of mouse Npr1.

Dilution

WB~~1:2000
IHC-P~~1:10~50

Format

Purified polyclonal antibody supplied in PBS with 0.09% (W/V) sodium azide. This antibody is purified through a protein A column, followed by peptide affinity purification.

Storage

Maintain refrigerated at 2-8°C for up to 2 weeks. For long term storage store at -20°C in small aliquots to prevent freeze-thaw cycles.

Precautions

Mouse Npr1 Antibody (N-term) is for research use only and not for use in diagnostic or therapeutic procedures.

Mouse Npr1 Antibody (N-term) - Protein Information

Name Npr1

Synonyms Npra

Function Receptor for the atrial natriuretic peptide NPPA/ANP and the brain natriuretic peptide NPPB/BNP which are potent vasoactive hormones playing a key role in cardiovascular homeostasis. Has guanylate cyclase activity upon binding of the ligand.

Cellular Location

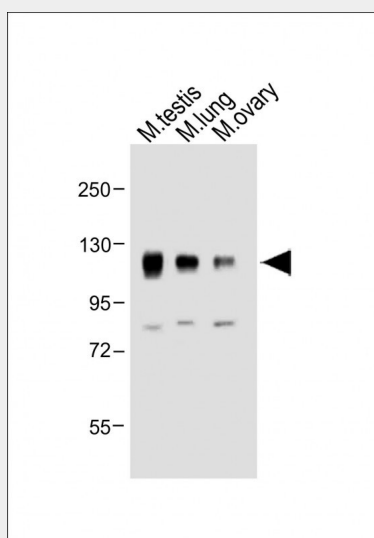
Membrane; Single-pass type I membrane protein.

Mouse Npr1 Antibody (N-term) - Protocols

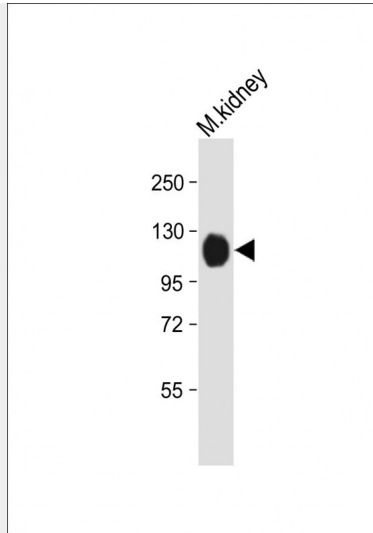
Provided below are standard protocols that you may find useful for product applications.

- [Western Blot](#)
- [Blocking Peptides](#)
- [Dot Blot](#)
- [Immunohistochemistry](#)
- [Immunofluorescence](#)
- [Immunoprecipitation](#)
- [Flow Cytometry](#)
- [Cell Culture](#)

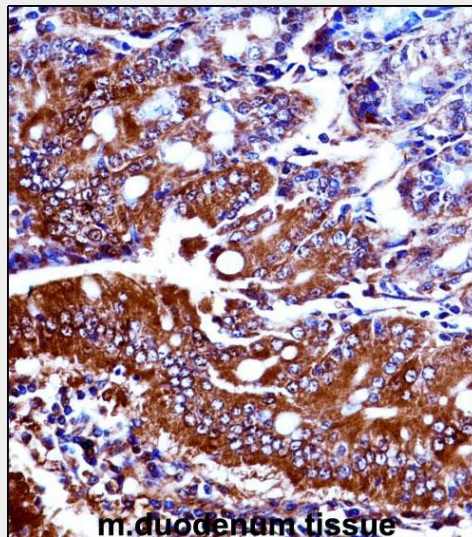
Mouse Npr1 Antibody (N-term) - Images



All lanes : Anti-Mouse Npr1 Antibody (N-term) at 1:2000 dilution Lane 1: Mouse testis whole tissue lysate Lane 2: Mouse lung whole tissue lysate Lane 3: Mouse ovary whole tissue lysate Lysates/proteins at 20 µg per lane. Secondary Goat Anti-Rabbit IgG, (H+L), Peroxidase conjugated at 1/10000 dilution. Predicted band size : 119 kDa Blocking/Dilution buffer: 5% NFD/MBST.



Anti-Mouse Npr1 Antibody (N-term) at 1:2000 dilution + Mouse kidney whole tissue lysate Lysates/proteins at 20 µg per lane. Secondary Goat Anti-Rabbit IgG, (H+L), Peroxidase conjugated at 1/10000 dilution. Predicted band size : 119 kDa Blocking/Dilution buffer: 5% NFD/MTBST.



Mouse Npr1 Antibody (N-term) (AP14073a) immunohistochemistry analysis in formalin fixed and paraffin embedded mouse duodenum tissue followed by peroxidase conjugation of the secondary antibody and DAB staining. This data demonstrates the use of Mouse Npr1 Antibody (N-term) for immunohistochemistry. Clinical relevance has not been evaluated.

Mouse Npr1 Antibody (N-term) - Background

Receptor for the atrial natriuretic peptide NPPA/ANP and the brain natriuretic peptide NPPB/BNP which are potent vasoactive hormones playing a key role in cardiovascular homeostasis. Has guanylate cyclase activity upon binding of the ligand.

Mouse Npr1 Antibody (N-term) - References

- Madhani, M., et al. Am. J. Physiol. Heart Circ. Physiol. 299 (3), H827-H836 (2010) :
- Panayiotou, C.M., et al. Br. J. Pharmacol. 160(8):2045-2054(2010)
- Ropero, A.B., et al. Endocrinology 151(8):3665-3674(2010)
- Tankersley, C.G., et al. Inhal Toxicol 22(8):695-707(2010)
- Long, L., et al. Neuro Endocrinol. Lett. 31(1):126-130(2010)