

SYT5 Antibody (Center)
Affinity Purified Rabbit Polyclonal Antibody (Pab)
Catalog # AP14064c

Specification

SYT5 Antibody (Center) - Product Information

Application	WB,E
Primary Accession	O00445
Other Accession	NP_003171.2
Reactivity	Human
Host	Rabbit
Clonality	Polyclonal
Isotype	Rabbit IgG
Calculated MW	42900
Antigen Region	138-167

SYT5 Antibody (Center) - Additional Information

Gene ID 6861

Other Names

Synaptotagmin-5, Synaptotagmin V, SytV, SYT5

Target/Specificity

This SYT5 antibody is generated from rabbits immunized with a KLH conjugated synthetic peptide between 138-167 amino acids from the Central region of human SYT5.

Dilution

WB~~1:1000

Format

Purified polyclonal antibody supplied in PBS with 0.09% (W/V) sodium azide. This antibody is purified through a protein A column, followed by peptide affinity purification.

Storage

Maintain refrigerated at 2-8°C for up to 2 weeks. For long term storage store at -20°C in small aliquots to prevent freeze-thaw cycles.

Precautions

SYT5 Antibody (Center) is for research use only and not for use in diagnostic or therapeutic procedures.

SYT5 Antibody (Center) - Protein Information

Name SYT5

Function May be involved in Ca(2+)-dependent exocytosis of secretory vesicles through Ca(2+) and phospholipid binding to the C2 domain or may serve as Ca(2+) sensors in the process of

vesicular trafficking and exocytosis. Regulates the Ca(2+)-dependent secretion of norepinephrine in PC12 cells. Required for export from the endocytic recycling compartment to the cell surface (By similarity).

Cellular Location

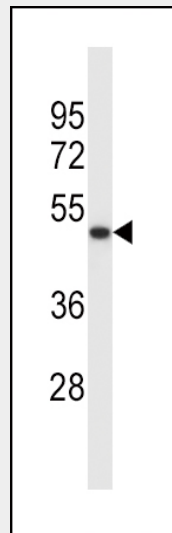
Cytoplasmic vesicle, secretory vesicle, synaptic vesicle membrane; Single-pass membrane protein. Recycling endosome membrane; Single-pass membrane protein. Note=In mast cells, localizes to the endocytic recycling compartment.

SYT5 Antibody (Center) - Protocols

Provided below are standard protocols that you may find useful for product applications.

- [Western Blot](#)
- [Blocking Peptides](#)
- [Dot Blot](#)
- [Immunohistochemistry](#)
- [Immunofluorescence](#)
- [Immunoprecipitation](#)
- [Flow Cytometry](#)
- [Cell Culture](#)

SYT5 Antibody (Center) - Images



SYT5 Antibody (Center) (Cat. #AP14064c) western blot analysis in K562 cell line lysates (35ug/lane). This demonstrates the SYT5 antibody detected the SYT5 protein (arrow).

SYT5 Antibody (Center) - Background

SYT5 may be involved in Ca(2+)-dependent exocytosis of secretory vesicles through Ca(2+) and phospholipid binding to the C2 domain or may serve as Ca(2+) sensors in the process of vesicular trafficking and exocytosis. Regulates the Ca(2+)-dependent secretion of norepinephrine in PC12 cells. Required for export from the endocytic recycling compartment to the cell surface (By similarity).

SYT5 Antibody (Center) - References

Martins-de-Souza, D., et al. J Psychiatr Res (2010) In press :
Sreenath, A.S., et al. Clin. Biochem. 38(5):436-443(2005)
Mizutani, A., et al. J. Biol. Chem. 275(13):9823-9831(2000)
Craxton, M., et al. FEBS Lett. 460(3):417-422(1999)
Fukuda, M., et al. J. Biol. Chem. 274(44):31421-31427(1999)