

**TAGLN2 Antibody (C-term)**  
**Affinity Purified Rabbit Polyclonal Antibody (Pab)**  
**Catalog # AP14063b****Specification**

---

**TAGLN2 Antibody (C-term) - Product Information**

Application	WB, IHC-P,E
Primary Accession	<a href="#">P37802</a>
Other Accession	<a href="#">Q5XFX0</a> , <a href="#">Q9WVA4</a> , <a href="#">NP_003555.1</a>
Reactivity	Human
Predicted	Mouse, Rat
Host	Rabbit
Clonality	Polyclonal
Isotype	Rabbit IgG
Calculated MW	22391
Antigen Region	136-165

**TAGLN2 Antibody (C-term) - Additional Information****Gene ID** 8407**Other Names**

Transgelin-2, Epididymis tissue protein Li 7e, SM22-alpha homolog, TAGLN2, KIAA0120

**Target/Specificity**

This TAGLN2 antibody is generated from rabbits immunized with a KLH conjugated synthetic peptide between 136-165 amino acids from the C-terminal region of human TAGLN2.

**Dilution**WB~~1:1000  
IHC-P~~1:10~50**Format**

Purified polyclonal antibody supplied in PBS with 0.09% (W/V) sodium azide. This antibody is purified through a protein A column, followed by peptide affinity purification.

**Storage**

Maintain refrigerated at 2-8°C for up to 2 weeks. For long term storage store at -20°C in small aliquots to prevent freeze-thaw cycles.

**Precautions**

TAGLN2 Antibody (C-term) is for research use only and not for use in diagnostic or therapeutic procedures.

**TAGLN2 Antibody (C-term) - Protein Information****Name** TAGLN2

**Synonyms** KIAA0120

**Tissue Location**

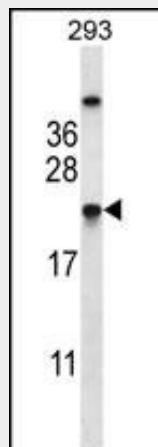
Expressed in epididymis (at protein level).

**TAGLN2 Antibody (C-term) - Protocols**

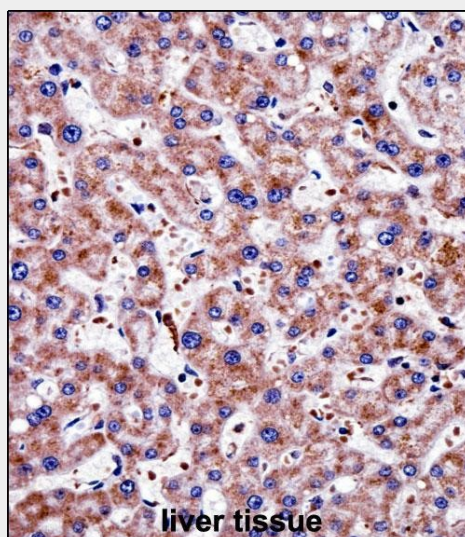
Provided below are standard protocols that you may find useful for product applications.

- [Western Blot](#)
- [Blocking Peptides](#)
- [Dot Blot](#)
- [Immunohistochemistry](#)
- [Immunofluorescence](#)
- [Immunoprecipitation](#)
- [Flow Cytometry](#)
- [Cell Culture](#)

**TAGLN2 Antibody (C-term) - Images**



TAGLN2 Antibody (C-term) (Cat. #AP14063b) western blot analysis in 293 cell line lysates (35ug/lane). This demonstrates the TAGLN2 antibody detected the TAGLN2 protein (arrow).



TAGLN2 Antibody (C-term) (AP14063b) immunohistochemistry analysis in formalin fixed and paraffin embedded human liver tissue followed by peroxidase conjugation of the secondary antibody and DAB staining. This data demonstrates the use of TAGLN2 Antibody (C-term) for immunohistochemistry. Clinical relevance has not been evaluated.

#### **TAGLN2 Antibody (C-term) - Background**

The protein encoded by this gene is a homolog of the protein transgelin, which is one of the earliest markers of differentiated smooth muscle. The function of this protein has not yet been determined.

#### **TAGLN2 Antibody (C-term) - References**

Rho, J.H., et al. J. Proteome Res. 8(12):5610-5618(2009)  
Ewing, R.M., et al. Mol. Syst. Biol. 3, 89 (2007) :  
Wang, L., et al. J. Mol. Med. 83(10):812-821(2005)  
Gevaert, K., et al. Nat. Biotechnol. 21(5):566-569(2003)  
Hoja, M.R., et al. Exp. Cell Res. 259(1):239-246(2000)