

Nucleostemin (GNL3) Antibody (Center)
Purified Rabbit Polyclonal Antibody (Pab)
Catalog # AP1405c

Specification

Nucleostemin (GNL3) Antibody (Center) - Product Information

Application	WB,E
Primary Accession	Q9BVP2
Reactivity	Human
Host	Rabbit
Clonality	Polyclonal
Isotype	Rabbit IgG
Calculated MW	61993
Antigen Region	191-220

Nucleostemin (GNL3) Antibody (Center) - Additional Information

Gene ID 26354

Other Names

Guanine nucleotide-binding protein-like 3, E2-induced gene 3 protein, Novel nucleolar protein 47, NNP47, Nucleolar GTP-binding protein 3, Nucleostemin, GNL3, E2IG3, NS

Target/Specificity

This Nucleostemin (GNL3) antibody is generated from rabbits immunized with a KLH conjugated synthetic peptide between 191-220 amino acids from the Central region of human Nucleostemin (GNL3).

Dilution

WB~~1:1000

Format

Purified polyclonal antibody supplied in PBS with 0.09% (W/V) sodium azide. This antibody is prepared by Saturated Ammonium Sulfate (SAS) precipitation followed by dialysis against PBS.

Storage

Maintain refrigerated at 2-8°C for up to 2 weeks. For long term storage store at -20°C in small aliquots to prevent freeze-thaw cycles.

Precautions

Nucleostemin (GNL3) Antibody (Center) is for research use only and not for use in diagnostic or therapeutic procedures.

Nucleostemin (GNL3) Antibody (Center) - Protein Information

Name GNL3

Synonyms E2IG3, NS

Function May be required to maintain the proliferative capacity of stem cells. Stabilizes MDM2 by preventing its ubiquitination, and hence proteasomal degradation (By similarity).

Cellular Location

Nucleus {ECO:0000250|UniProtKB:Q811S9}. Nucleus, nucleolus. Note=Shuttles between the nucleus and nucleolus. {ECO:0000250|UniProtKB:Q811S9}

Tissue Location

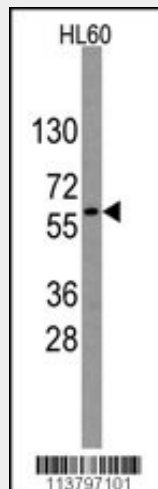
Increased levels in lung tissue in cancer patients.

Nucleostemin (GNL3) Antibody (Center) - Protocols

Provided below are standard protocols that you may find useful for product applications.

- [Western Blot](#)
- [Blocking Peptides](#)
- [Dot Blot](#)
- [Immunohistochemistry](#)
- [Immunofluorescence](#)
- [Immunoprecipitation](#)
- [Flow Cytometry](#)
- [Cell Culture](#)

Nucleostemin (GNL3) Antibody (Center) - Images



Western blot analysis of anti-GNL3 Antibody (Center) (RB13797) in HL60 cell line lysates (35ug/lane). GNL3 (arrow) was detected using the purified Pab.

Nucleostemin (GNL3) Antibody (Center) - Background

GNL3 may be required to maintain the proliferative capacity of stem cells.