

TRPV2 Antibody (N-term)
Affinity Purified Rabbit Polyclonal Antibody (Pab)
Catalog # AP14049a

Specification

TRPV2 Antibody (N-term) - Product Information

Application	WB,E
Primary Accession	O9Y5S1
Other Accession	NP_057197.2
Reactivity	Human
Host	Rabbit
Clonality	Polyclonal
Isotype	Rabbit IgG
Calculated MW	85981
Antigen Region	52-81

TRPV2 Antibody (N-term) - Additional Information

Gene ID 51393

Other Names

Transient receptor potential cation channel subfamily V member 2, TrpV2, Osm-9-like TRP channel 2, OTRPC2, Vanilloid receptor-like protein 1, VRL-1, TRPV2, VRL

Target/Specificity

This TRPV2 antibody is generated from rabbits immunized with a KLH conjugated synthetic peptide between 52-81 amino acids from the N-terminal region of human TRPV2.

Dilution

WB~~1:1000

Format

Purified polyclonal antibody supplied in PBS with 0.09% (W/V) sodium azide. This antibody is purified through a protein A column, followed by peptide affinity purification.

Storage

Maintain refrigerated at 2-8°C for up to 2 weeks. For long term storage store at -20°C in small aliquots to prevent freeze-thaw cycles.

Precautions

TRPV2 Antibody (N-term) is for research use only and not for use in diagnostic or therapeutic procedures.

TRPV2 Antibody (N-term) - Protein Information

Name TRPV2

Synonyms VRL

Function Calcium-permeable, non-selective cation channel with an outward rectification. Seems to be regulated, at least in part, by IGF- I, PDGF and neuropeptide head activator. May transduce physical stimuli in mast cells. Activated by temperatures higher than 52 degrees Celsius; is not activated by vanilloids and acidic pH.

Cellular Location

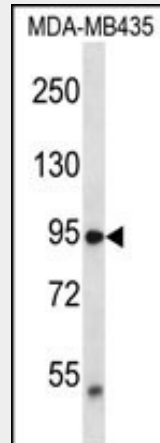
Cell membrane {ECO:0000250|UniProtKB:Q9WTR1}; Multi-pass membrane protein. Cytoplasm {ECO:0000250|UniProtKB:Q9WTR1}. Melanosome. Note=Translocates from the cytoplasm to the plasma membrane upon ligand stimulation (By similarity). Identified by mass spectrometry in melanosome fractions from stage I to stage IV {ECO:0000250|UniProtKB:Q9WTR1}

TRPV2 Antibody (N-term) - Protocols

Provided below are standard protocols that you may find useful for product applications.

- [Western Blot](#)
- [Blocking Peptides](#)
- [Dot Blot](#)
- [Immunohistochemistry](#)
- [Immunofluorescence](#)
- [Immunoprecipitation](#)
- [Flow Cytometry](#)
- [Cell Culture](#)

TRPV2 Antibody (N-term) - Images



TRPV2 Antibody (N-term) (Cat. #AP14049a) western blot analysis in MDA-MB435 cell line lysates (35ug/lane). This demonstrates the TRPV2 antibody detected the TRPV2 protein (arrow).

TRPV2 Antibody (N-term) - Background

This gene encodes an ion channel that is activated by high temperatures above 52 degrees Celsius. The protein may be involved in transduction of high-temperature heat responses in sensory ganglia. It is thought that in other tissues the channel may be activated by stimuli other than heat.

TRPV2 Antibody (N-term) - References

Mercado, J., et al. J. Neurosci. 30(40):13338-13347(2010)

Nabissi, M., et al. Carcinogenesis 31(5):794-803(2010)
Monet, M., et al. Cancer Res. 70(3):1225-1235(2010)
Liu, G., et al. Cancer Genet. Cytogenet. 197(1):54-59(2010)
Saunders, C.I., et al. Biochim. Biophys. Acta 1792(10):1019-1026(2009)