

NPPC Antibody (C-term)
Affinity Purified Rabbit Polyclonal Antibody (Pab)
Catalog # AP14031b**Specification**

NPPC Antibody (C-term) - Product Information

Application	WB, IHC-P,E
Primary Accession	P23582
Other Accession	NP_077720.1
Reactivity	Human
Host	Rabbit
Clonality	Polyclonal
Isotype	Rabbit IgG
Antigen Region	80-109

NPPC Antibody (C-term) - Additional Information**Gene ID** 4880**Other Names**

C-type natriuretic peptide, CNP-22, CNP-29, CNP-53, NPPC, CNP2

Target/Specificity

This NPPC antibody is generated from rabbits immunized with a KLH conjugated synthetic peptide between 80-109 amino acids from the C-terminal region of human NPPC.

DilutionWB~~1:1000
IHC-P~~1:10~50**Format**

Purified polyclonal antibody supplied in PBS with 0.09% (W/V) sodium azide. This antibody is purified through a protein A column, followed by peptide affinity purification.

Storage

Maintain refrigerated at 2-8°C for up to 2 weeks. For long term storage store at -20°C in small aliquots to prevent freeze-thaw cycles.

Precautions

NPPC Antibody (C-term) is for research use only and not for use in diagnostic or therapeutic procedures.

NPPC Antibody (C-term) - Protein Information**Name** NPPC**Synonyms** CNP2

Function [CNP-22]: Hormone which plays a role in endochondral ossification through regulation of cartilaginous growth plate chondrocytes proliferation and differentiation (By similarity). May also be vasoactive and natriuretic (PubMed:[1672777](#)). Acts by specifically binding and stimulating NPR2 to produce cGMP (PubMed:[1672777](#), PubMed:[21098034](#)). Binds the clearance receptor NPR3 (PubMed:[11533490](#)).

Cellular Location

Secreted.

Tissue Location

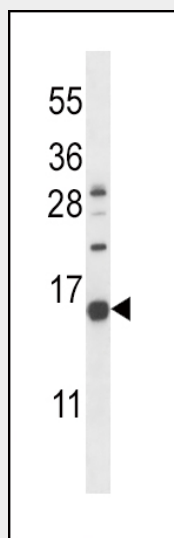
[CNP-22]: In the kidney, predominantly expressed in the distal tubular cells (at protein level)

NPPC Antibody (C-term) - Protocols

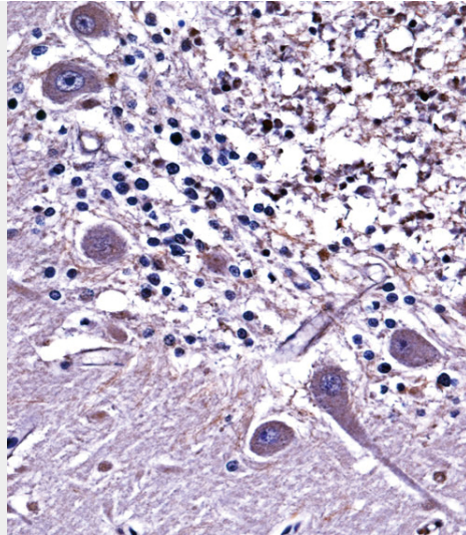
Provided below are standard protocols that you may find useful for product applications.

- [Western Blot](#)
- [Blocking Peptides](#)
- [Dot Blot](#)
- [Immunohistochemistry](#)
- [Immunofluorescence](#)
- [Immunoprecipitation](#)
- [Flow Cytometry](#)
- [Cell Culture](#)

NPPC Antibody (C-term) - Images



NPPC Antibody (C-term) (Cat. #AP14031b) western blot analysis in K562 cell line lysates (35ug/lane). This demonstrates the NPPC antibody detected the NPPC protein (arrow).



NPPC Antibody (C-term) (AP14031b) immunohistochemistry analysis in formalin fixed and paraffin embedded human cerebellum tissue followed by peroxidase conjugation of the secondary antibody and DAB staining. This data demonstrates the use of NPPC Antibody (C-term) for immunohistochemistry. Clinical relevance has not been evaluated.

NPPC Antibody (C-term) - Background

Natriuretic peptides comprise a family of 3 structurally related molecules: atrial natriuretic peptide (ANP; MIM 108780), brain natriuretic peptide (BNP; MIM 600295), and C-type natriuretic peptide, CNP, encoded by a gene symbolized NPPC. These peptides possess potent natriuretic, diuretic, and vasodilating activities and are implicated in body fluid homeostasis and blood pressure control.

NPPC Antibody (C-term) - References

Lippert, S.K., et al. J. Immunol. Methods 362 (1-2), 32-37 (2010) :
Bailey, S.D., et al. Diabetes Care 33(10):2250-2253(2010)
Saus, E., et al. J Psychiatr Res 44(14):971-978(2010)
Wang, Y., et al. J. Cardiovasc. Pharmacol. 55(1):62-66(2010)
Cammarata, P.R., et al. Mol. Vis. 16, 630-638 (2010) :