

SUV39H1 Antibody (N-term)
Affinity Purified Rabbit Polyclonal Antibody (Pab)
Catalog # AP14022a

Specification

SUV39H1 Antibody (N-term) - Product Information

Application	WB,E
Primary Accession	O43463
Other Accession	NP_003164.1
Reactivity	Human
Host	Rabbit
Clonality	Polyclonal
Isotype	Rabbit IgG
Calculated MW	47907
Antigen Region	79-108

SUV39H1 Antibody (N-term) - Additional Information

Gene ID 6839

Other Names

Histone-lysine N-methyltransferase SUV39H1, Histone H3-K9 methyltransferase 1, H3-K9-HMTase 1, Lysine N-methyltransferase 1A, Position-effect variegation 3-9 homolog, Suppressor of variegation 3-9 homolog 1, Su(var)3-9 homolog 1, SUV39H1, KMT1A, SUV39H

Target/Specificity

This SUV39H1 antibody is generated from rabbits immunized with a KLH conjugated synthetic peptide between 79-108 amino acids from the N-terminal region of human SUV39H1.

Dilution

WB~~1:1000

Format

Purified polyclonal antibody supplied in PBS with 0.09% (W/V) sodium azide. This antibody is purified through a protein A column, followed by peptide affinity purification.

Storage

Maintain refrigerated at 2-8°C for up to 2 weeks. For long term storage store at -20°C in small aliquots to prevent freeze-thaw cycles.

Precautions

SUV39H1 Antibody (N-term) is for research use only and not for use in diagnostic or therapeutic procedures.

SUV39H1 Antibody (N-term) - Protein Information

Name SUV39H1

Synonyms KMT1A, SUV39H

Function Histone methyltransferase that specifically trimethylates 'Lys-9' of histone H3 using monomethylated H3 'Lys-9' as substrate. Also weakly methylates histone H1 (in vitro). H3 'Lys-9' trimethylation represents a specific tag for epigenetic transcriptional repression by recruiting HP1 (CBX1, CBX3 and/or CBX5) proteins to methylated histones. Mainly functions in heterochromatin regions, thereby playing a central role in the establishment of constitutive heterochromatin at pericentric and telomere regions. H3 'Lys-9' trimethylation is also required to direct DNA methylation at pericentric repeats. SUV39H1 is targeted to histone H3 via its interaction with RB1 and is involved in many processes, such as repression of MYOD1-stimulated differentiation, regulation of the control switch for exiting the cell cycle and entering differentiation, repression by the PML-RARA fusion protein, BMP-induced repression, repression of switch recombination to IgA and regulation of telomere length. Component of the eNoSC (energy-dependent nucleolar silencing) complex, a complex that mediates silencing of rDNA in response to intracellular energy status and acts by recruiting histone-modifying enzymes. The eNoSC complex is able to sense the energy status of cell: upon glucose starvation, elevation of NAD(+)/NADP(+) ratio activates SIRT1, leading to histone H3 deacetylation followed by dimethylation of H3 at 'Lys-9' (H3K9me2) by SUV39H1 and the formation of silent chromatin in the rDNA locus. Recruited by the large PER complex to the E-box elements of the circadian target genes such as PER2 itself or PER1, contributes to the conversion of local chromatin to a heterochromatin-like repressive state through H3 'Lys-9' trimethylation.

Cellular Location

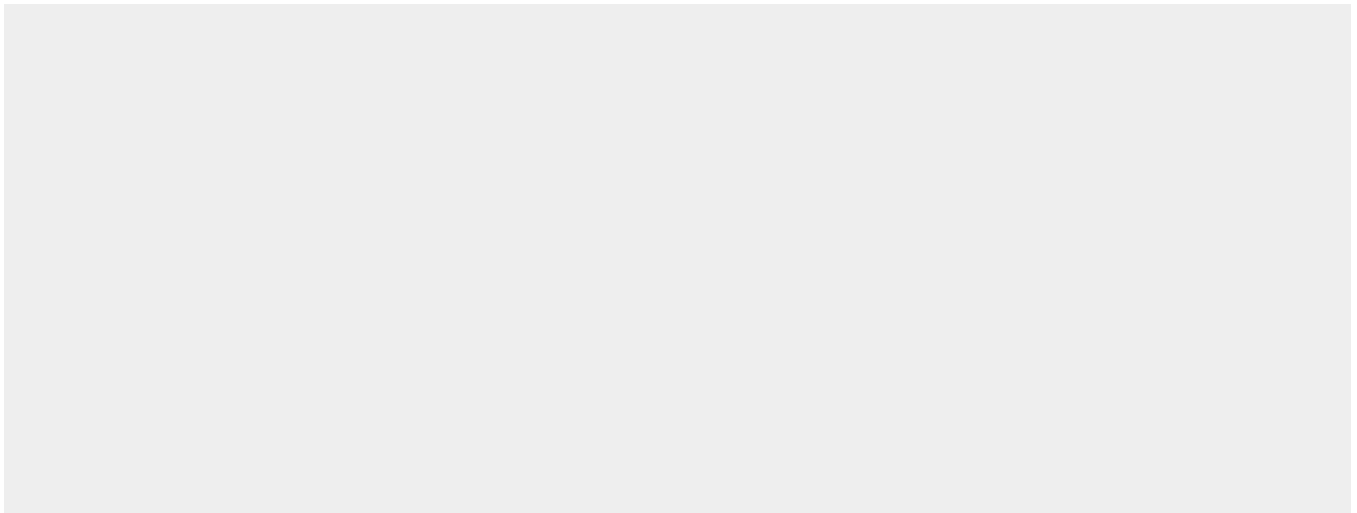
Nucleus. Nucleus lamina. Nucleus, nucleoplasm Chromosome, centromere. Note=Associates with centromeric constitutive heterochromatin

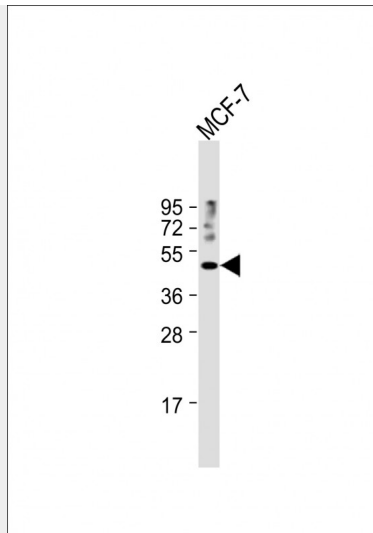
SUV39H1 Antibody (N-term) - Protocols

Provided below are standard protocols that you may find useful for product applications.

- [Western Blot](#)
- [Blocking Peptides](#)
- [Dot Blot](#)
- [Immunohistochemistry](#)
- [Immunofluorescence](#)
- [Immunoprecipitation](#)
- [Flow Cytometry](#)
- [Cell Culture](#)

SUV39H1 Antibody (N-term) - Images





Anti-SUV39H1 Antibody (N-term) at 1:1000 dilution + MCF-7 whole cell lysate Lysates/proteins at 20 µg per lane. Secondary Goat Anti-Rabbit IgG, (H+L), Peroxidase conjugated at 1/10000 dilution. Predicted band size : 48 kDa Blocking/Dilution buffer: 5% NFDN/TBST.

SUV39H1 Antibody (N-term) - Background

This gene is a member of the suppressor of variegation 3-9 homolog family and encodes a protein with a chromodomain and a C-terminal SET domain. This nuclear protein moves to the centromeres during mitosis and functions as a histone methyltransferase, methylating Lys-9 of histone H3. Overall, it plays a vital role in heterochromatin organization, chromosome segregation, and mitotic progression.

SUV39H1 Antibody (N-term) - References

- Chen, L., et al. EMBO J. 29(15):2538-2552(2010)
- Goyama, S., et al. Leukemia 24(1):81-88(2010)
- Cherrier, T., et al. Oncogene 28(38):3380-3389(2009)
- Li, Z., et al. J. Biol. Chem. 284(16):10361-10366(2009)
- Spensberger, D., et al. FEBS Lett. 582(18):2761-2767(2008)