

**CHRNA5 Antibody (Center)**  
**Affinity Purified Rabbit Polyclonal Antibody (Pab)**  
**Catalog # AP14006c**

**Specification**

---

**CHRNA5 Antibody (Center) - Product Information**

Application	WB,E
Primary Accession	<a href="#">P30532</a>
Other Accession	<a href="#">Q8SPU7</a> , <a href="#">NP_000736.2</a>
Reactivity	Human, Mouse
Predicted	Bovine
Host	Rabbit
Clonality	Polyclonal
Isotype	Rabbit IgG
Calculated MW	53054
Antigen Region	187-216

**CHRNA5 Antibody (Center) - Additional Information**

**Gene ID** 1138

**Other Names**

Neuronal acetylcholine receptor subunit alpha-5, CHRNA5, NACHRA5

**Target/Specificity**

This CHRNA5 antibody is generated from rabbits immunized with a KLH conjugated synthetic peptide between 187-216 amino acids from the Central region of human CHRNA5.

**Dilution**

WB~~1:1000

**Format**

Purified polyclonal antibody supplied in PBS with 0.09% (W/V) sodium azide. This antibody is purified through a protein A column, followed by peptide affinity purification.

**Storage**

Maintain refrigerated at 2-8°C for up to 2 weeks. For long term storage store at -20°C in small aliquots to prevent freeze-thaw cycles.

**Precautions**

CHRNA5 Antibody (Center) is for research use only and not for use in diagnostic or therapeutic procedures.

**CHRNA5 Antibody (Center) - Protein Information**

**Name** CHRNA5

**Synonyms** NACHRA5

**Function** After binding acetylcholine, the AChR responds by an extensive change in conformation that affects all subunits and leads to opening of an ion-conducting channel across the plasma membrane.

**Cellular Location**

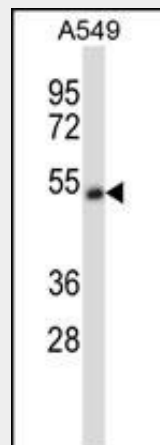
Postsynaptic cell membrane; Multi-pass membrane protein. Cell membrane; Multi-pass membrane protein

**CHRNA5 Antibody (Center) - Protocols**

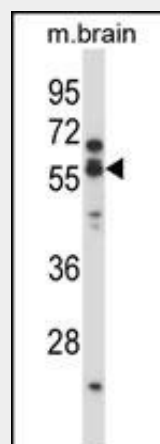
Provided below are standard protocols that you may find useful for product applications.

- [Western Blot](#)
- [Blocking Peptides](#)
- [Dot Blot](#)
- [Immunohistochemistry](#)
- [Immunofluorescence](#)
- [Immunoprecipitation](#)
- [Flow Cytometry](#)
- [Cell Culture](#)

**CHRNA5 Antibody (Center) - Images**



CHRNA5 Antibody (Center) (Cat. #AP14006c) western blot analysis in A549 cell line lysates (35ug/lane). This demonstrates the CHRNA5 antibody detected the CHRNA5 protein (arrow).



CHRNA5 Antibody (Center) (Cat. #AP14006c) western blot analysis in mouse brain tissue lysates (35ug/lane). This demonstrates the CHRNA5 antibody detected the CHRNA5 protein (arrow).

#### **CHRNA5 Antibody (Center) - Background**

The protein encoded by this gene is a nicotinic acetylcholine receptor subunit and a member of a superfamily of ligand-gated ion channels that mediate fast signal transmission at synapses. These receptors are thought to be heteropentamers composed of separate but similar subunits. Defects in this gene have been linked to susceptibility to lung cancer type 2 (LNCR2).

#### **CHRNA5 Antibody (Center) - References**

Wessel, J., et al. Neuropsychopharmacology 35(12):2392-2402(2010)  
Erlich, P.M., et al. Hum. Genet. 128(5):491-499(2010)  
Shimada, M., et al. Hum. Genet. 128(4):433-441(2010)  
Falvella, F.S., et al. J. Natl. Cancer Inst. 102(17):1366-1370(2010)  
Li, M.D., et al. PLoS ONE 5 (8), E12183 (2010) :