

PDIA2 Antibody (Center)
Affinity Purified Rabbit Polyclonal Antibody (Pab)
Catalog # AP14003C

Specification

PDIA2 Antibody (Center) - Product Information

Application	WB,E
Primary Accession	O13087
Other Accession	NP_006840.2
Reactivity	Human
Host	Rabbit
Clonality	Polyclonal
Isotype	Rabbit IgG
Calculated MW	58206
Antigen Region	210-239

PDIA2 Antibody (Center) - Additional Information

Gene ID 64714

Other Names

Protein disulfide-isomerase A2, Pancreas-specific protein disulfide isomerase, PDIP, PDIA2, PDIP

Target/Specificity

This PDIA2 antibody is generated from rabbits immunized with a KLH conjugated synthetic peptide between 210-239 amino acids from the Central region of human PDIA2.

Dilution

WB~~1:1000

Format

Purified polyclonal antibody supplied in PBS with 0.09% (W/V) sodium azide. This antibody is purified through a protein A column, followed by peptide affinity purification.

Storage

Maintain refrigerated at 2-8°C for up to 2 weeks. For long term storage store at -20°C in small aliquots to prevent freeze-thaw cycles.

Precautions

PDIA2 Antibody (Center) is for research use only and not for use in diagnostic or therapeutic procedures.

PDIA2 Antibody (Center) - Protein Information

Name PDIA2

Synonyms PDIP

Function Acts as an intracellular estrogen-binding protein. May be involved in modulating cellular levels and biological functions of estrogens in the pancreas. May act as a chaperone that inhibits aggregation of misfolded proteins.

Cellular Location

Endoplasmic reticulum lumen {ECO:0000255|PROSITE- ProRule:PRU10138}

Tissue Location

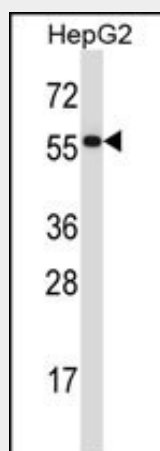
Highly expressed in pancreas (at protein level).

PDIA2 Antibody (Center) - Protocols

Provided below are standard protocols that you may find useful for product applications.

- [Western Blot](#)
- [Blocking Peptides](#)
- [Dot Blot](#)
- [Immunohistochemistry](#)
- [Immunofluorescence](#)
- [Immunoprecipitation](#)
- [Flow Cytometry](#)
- [Cell Culture](#)

PDIA2 Antibody (Center) - Images



PDIA2 Antibody (Center) (Cat. #AP14003c) western blot analysis in HepG2 cell line lysates (35ug/lane). This demonstrates the PDIA2 antibody detected the PDIA2 protein (arrow).

PDIA2 Antibody (Center) - Background

Protein disulfide isomerases (EC 5.3.4.1), such as PDIP, are endoplasmic reticulum (ER) resident proteins that catalyze protein folding and thiol-disulfide interchange reactions (Desilva et al., 1996 [PubMed 8561901]).

PDIA2 Antibody (Center) - References

Bailey, S.D., et al. Diabetes Care 33(10):2250-2253(2010)
Swiatkowska, M., et al. J. Biol. Chem. 285(39):29874-29883(2010)
Wang, C., et al. J. Biol. Chem. 285(35):26788-26797(2010)

Honjo, Y., et al. Brain Res. 1349, 90-96 (2010) :
Popescu, N.I., et al. Blood 116(6):993-1001(2010)