

SFTPD Antibody (C-term)
Affinity Purified Rabbit Polyclonal Antibody (Pab)
Catalog # AP13998b

Specification

SFTPD Antibody (C-term) - Product Information

Application	WB,E
Primary Accession	P35247
Other Accession	NP_003010.4
Reactivity	Human
Host	Rabbit
Clonality	Polyclonal
Isotype	Rabbit IgG
Calculated MW	37728
Antigen Region	301-330

SFTPD Antibody (C-term) - Additional Information

Gene ID 6441

Other Names

Pulmonary surfactant-associated protein D, PSP-D, SP-D, Collectin-7, Lung surfactant protein D, SFTPD, COLEC7, PSPD, SFTP4

Target/Specificity

This SFTPD antibody is generated from rabbits immunized with a KLH conjugated synthetic peptide between 301-330 amino acids from the C-terminal region of human SFTPD.

Dilution

WB~~1:1000

Format

Purified polyclonal antibody supplied in PBS with 0.09% (W/V) sodium azide. This antibody is purified through a protein A column, followed by peptide affinity purification.

Storage

Maintain refrigerated at 2-8°C for up to 2 weeks. For long term storage store at -20°C in small aliquots to prevent freeze-thaw cycles.

Precautions

SFTPD Antibody (C-term) is for research use only and not for use in diagnostic or therapeutic procedures.

SFTPD Antibody (C-term) - Protein Information

Name SFTPD

Synonyms COLEC7, PSPD, SFTP4

Function Contributes to the lung's defense against inhaled microorganisms, organic antigens and toxins. Interacts with compounds such as bacterial lipopolysaccharides, oligosaccharides and fatty acids and modulates leukocyte action in immune response. May participate in the extracellular reorganization or turnover of pulmonary surfactant. Binds strongly maltose residues and to a lesser extent other alpha- glucosyl moieties.

Cellular Location

Secreted, extracellular space, extracellular matrix. Secreted, extracellular space, surface film

Tissue Location

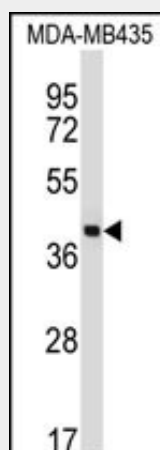
Expressed in lung, brain, pancreas and adipose tissue (mainly mature adipocytes).

SFTPD Antibody (C-term) - Protocols

Provided below are standard protocols that you may find useful for product applications.

- [Western Blot](#)
- [Blocking Peptides](#)
- [Dot Blot](#)
- [Immunohistochemistry](#)
- [Immunofluorescence](#)
- [Immunoprecipitation](#)
- [Flow Cytometry](#)
- [Cell Culture](#)

SFTPD Antibody (C-term) - Images



SFTPD Antibody (C-term) (Cat. #AP13998b) western blot analysis in MDA-MB435 cell line lysates (35ug/lane). This demonstrates the SFTPD antibody detected the SFTPD protein (arrow).

SFTPD Antibody (C-term) - Background

SFTPD contributes to the lung's defense against inhaled microorganisms. May participate in the extracellular reorganization or turnover of pulmonary surfactant. Binds strongly maltose residues and to a lesser extent other alpha-glucosyl moieties.

SFTPD Antibody (C-term) - References

Bailey, S.D., et al. Diabetes Care 33(10):2250-2253(2010)
Hartshorn, K.L., et al. Am. J. Physiol. Lung Cell Mol. Physiol. 299 (3), L384-L392 (2010) :

de Wit, E., et al. Mamm. Genome (2010) In press :
Paantjens, A.W., et al. Transplantation 90(3):340-342(2010)
Barlo, N.P., et al. Sarcoidosis Vasc Diffuse Lung Dis 26(2):155-161(2009)