

**VTI1B Antibody (Center)**  
**Affinity Purified Rabbit Polyclonal Antibody (Pab)**  
**Catalog # AP13952c**

**Specification**

---

**VTI1B Antibody (Center) - Product Information**

|                   |  |
|-------------------|--|
| Application       | WB,E   |
| Primary Accession | <a href="#">O9UEU0</a>                               |
| Other Accession   | <a href="#">O88384</a> , <a href="#">NP_006361.1</a> |
| Reactivity        | Human  |
| Predicted         | Mouse  |
| Host              | Rabbit   |
| Clonality         | Polyclonal   |
| Isotype           | Rabbit IgG   |
| Calculated MW     | 26688  |
| Antigen Region    | 59-86  |

**VTI1B Antibody (Center) - Additional Information**

**Gene ID** 10490

**Other Names**

Vesicle transport through interaction with t-SNAREs homolog 1B, Vesicle transport v-SNARE protein Vti1-like 1, Vti1-rp1, VTI1B, VTI1, VTI1L, VTI1L1, VTI2

**Target/Specificity**

This VTI1B antibody is generated from rabbits immunized with a KLH conjugated synthetic peptide between 59-86 amino acids from the Central region of human VTI1B.

**Dilution**

WB~~1:1000

**Format**

Purified polyclonal antibody supplied in PBS with 0.09% (W/V) sodium azide. This antibody is purified through a protein A column, followed by peptide affinity purification.

**Storage**

Maintain refrigerated at 2-8°C for up to 2 weeks. For long term storage store at -20°C in small aliquots to prevent freeze-thaw cycles.

**Precautions**

VTI1B Antibody (Center) is for research use only and not for use in diagnostic or therapeutic procedures.

**VTI1B Antibody (Center) - Protein Information**

**Name** VTI1B

**Synonyms** VTI1, VTI1L, VTI1L1, VTI2

**Function** V-SNARE that mediates vesicle transport pathways through interactions with t-SNAREs on the target membrane. These interactions are proposed to mediate aspects of the specificity of vesicle trafficking and to promote fusion of the lipid bilayers. May be concerned with increased secretion of cytokines associated with cellular senescence.

**Cellular Location**

Early endosome membrane; Single-pass type IV membrane protein. Late endosome membrane; Single-pass type IV membrane protein. Lysosome membrane. Cytoplasmic granule. Recycling endosome membrane; Single-pass type IV membrane protein

**Tissue Location**

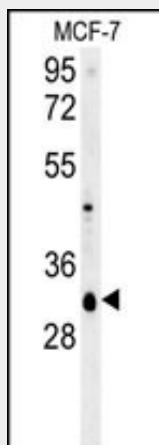
Expressed in all tissues examined.

**VTI1B Antibody (Center) - Protocols**

Provided below are standard protocols that you may find useful for product applications.

- [Western Blot](#)
- [Blocking Peptides](#)
- [Dot Blot](#)
- [Immunohistochemistry](#)
- [Immunofluorescence](#)
- [Immunoprecipitation](#)
- [Flow Cytometry](#)
- [Cell Culture](#)

**VTI1B Antibody (Center) - Images**



VTI1B Antibody (Center) (Cat. #AP13952c) western blot analysis in MCF-7 cell line lysates (35ug/lane). This demonstrates the VTI1B antibody detected the VTI1B protein (arrow).

**VTI1B Antibody (Center) - Background**

V-SNARE that mediates vesicle transport pathways through interactions with t-SNAREs on the target membrane. These interactions are proposed to mediate aspects of the specificity of vesicle trafficking and to promote fusion of the lipid bilayers. May be concerned with increased secretion of cytokines associated with cellular senescence.

**VTI1B Antibody (Center) - References**

- Furuta, N., et al. Mol. Biol. Cell 21(6):1001-1010(2010)  
Bilan, F., et al. Exp. Cell Res. 314 (11-12), 2199-2211 (2008) :  
Hirst, J., et al. Mol. Biol. Cell 15(12):5593-5602(2004)  
Yan, Q., et al. J. Biol. Chem. 279(18):18270-18276(2004)  
Martinez-Arca, S., et al. Proc. Natl. Acad. Sci. U.S.A. 100(15):9011-9016(2003)